

REFERENCES

- กองกานดา ชยามฤต, สมุนไพรไทย ตอนที่ 4, กรมป่าไม้, กรุงเทพฯ, 2528.
- เต็ม สมิตินันท์, ชื่อพรรณไม้เมืองไทย (ชื่อพฤกษศาสตร์-ชื่อพื้นเมือง), กรมป่าไม้, กรุงเทพฯ, 2523.
- เสวริมเกียรติ ลอวีระอมรพันธุ์, "การศึกษาเบื้องต้นทางอนุกรมวิธานของพันธุ์ไม้สกุลอิโปเมียที่พบในประเทศไทย" วิทยานิพนธ์ปริญญาโทภาคศึกษาศาสตร์ คณะศึกษาศาสตร์ จุฬาลงกรณ์มหาวิทยาลัย, 2527.
- Austin, D.F., and S. Chazanfar, "Convolvulaceae," Flora of West Pakistan (Nasir, E. and Ali, S.I.), no.126, pp. 1-64, Pan Graphic, Islamabad, 1979.
- Austin, D.F., and Staples, G.W., "Xenostegia, A New Genus of Convolvulaceae," Brittonia, 32(4), pp. 533-536, 1980.
- _____. "Convolvulaceae," Memories of The New York Botanical Garden, vol.32, pp.309-323, USA., 1981.
- _____. "Addition and Changes in the Neotropical Convolvulaceae - Notes on Merremia, Operculina, and Turbina," Journal of the Arnold Arboretum, 64, pp. 483-489, President and Fellows of Harvard College, USA., 1983.
- _____. "Pterogenia As A Synonym of Donamia (Convolvulaceae) with Comments on Allied Species," Brittonia, 37(3), pp. 310-316, 1985.
- Austin, D.F., "Convolvulaceae" Flora of Ceylon (Dassanayake, M.D.), vol.1, pp. 288-363, Oxonian Press Pvt. Ltd., Faridabad, 1980.
- Backer, C.A., and Bakhuizen van Den Brink, R.C., Flora of Java, vol.2, pp. 483-498, N.V.P. Noordhoff-Groningen, The Netherlands, 1965.
- Bell, P.R., and Woodcock, L.F., The Diversity of Green Plants, Edward Arnold (Publisher) Ltd., London, 3rd ed., 1986.
- Denson, L., Plant Classification, D.C. Heath and Company, Lexington, Massachusetts, 1959.
- Clarke, C.B., "Convolvulaceae," Flora of British India (Hooker, J.D.), vol.4, pp. 179-228, L. Reeve & CO., Ltd., Kent, 1885.

- Eames, A.J., Morphology of Angiosperm, pp. 8-10, 67-94. Tata McGraw-Hill Publishing Co.Ltd. Bombay-New Delhi, 1961.
- Erdtman, G., Pollen Morphology and Plant Taxonomy - Angiosperms, Almqvist & Wiksells, Upsala, Sweden, 1971.
- Fægri, K., and Iversen, J., Textbook of Pollen Analysis, Villadsen og Christensen, Copenhagen, 2 nd ed., 1966.
- Ferguson, I.K., Verdcourt, B., and Poole, M.M., "Pollen Morphology in the genera *Merremia* and *Operculina* (Convolvulaceae) and its Taxonomic Significance," Kew Bulletin, 31(4), pp. 763-773, Great Britain, 1977.
- Gunderson, A., Families of Dicotyledons, Chronica Botanica Company, USA., 1950.
- Heine, H., "Convolvulaceae," Flora of West Tropical Africa, vol.2, pp. 335-352, London, 1963.
- Henderson, M.R., Malayan Wild Flowers (Dicotyledons), pp. 311-320, The Malayan Nature Society, Kuala Lumpur, 1974.
- Heywood, V.H., Flowering Plants of the World, Croom Helm Publisher Ltd., England, 1985.
- Hutchinson, J., British Flowering Plants, P.R. Gawthorn Ltd., London, 1948.
- _____. The Families of Flowering Plants, vol.1 Dicotyledons, Macmillan & CO.,Ltd., London, 2 nd ed., 1959.
- Huynh, K.L., "Arrangement of some monosulcate, disulcate, trisulcate, dicolpate and tricolpate pollentypes in the tetrad, and some aspects of evolution in the angiosperm," The Evolutionary Significance of the Exine (Ferguson, I.K. and J. Muller, eds.), pp.101-124, Academic Press, London, 1976.
- Hyde, H.A., and Adams, K.F., An Atlas of Airborne Pollen Grains, Macmillan & CO.Ltd., St. Martin's Press, London, 1958.
- Jaeger, E.C., A Source-Book of Biological Names and Terms, Charles C Thomas - Publisher, Illinois, USA., 3 rd ed., 1959.
- Jones, S.B., and Luchsinger, A.E., Plant Systematics, McGraw-Hill Book Co., Singapore, 2 nd ed., 1987.

- Kerr, A., "Contribution to The Flora of Thailand", Kew Bulletin, pp. 18-19. 1941.
- _____. "Convolvulaceae," Flora Siamensis Enumeratio (Craib, W.G.), vol.3 part 1, pp.89-100, The Dangkok Times Press, Ltd., Bangkok, 1951.
- _____. "Convolvulaceae," Flora Siamensis Enumeratio (Craib, W.G.), vol.3 part 2, pp. 1-35, The Dangkok Times Press, Ltd., Bangkok, 1954.
- Khan, M.S., "Convolvulaceae," Flora of Bangladesh (Khan, MD.S.), no.30, pp. 1-59, Bangladesh Agricultural Research Council, Bangladesh, 1985.
- Kurz, S., Forest Flora of British Burma, vol.2, pp. 211-222, Office of the Superintendent of Government Printing, Calcutta, 1877.
- Liang, J.F., "The stratigraphic setting of early angiosperm pollen," The Evolutionary Significance of the Exine (Ferguson, I.K. and J. Muller, eds), pp. 15-26, Academic Press, London, 1976.
- Mabberley, D.J., "Generic Names Published in Salisbury's Reviews of Robert Brown's Works," Taxon 29(5/6), pp. 606, 1980.
- Moore, P.D., and Webb, J.A., An Illustrated Guide to Pollen Analysis, Hodder and Stoughton Limited - Richard Clay (The Chaucer Press) Ltd., Suffolk, 1978.
- Flowden, C.C., A Manual of Plant Names, Lowe and Brydone (Printers) Ltd., London, 3rd ed., 1972.
- Rendle, A.D., The Classification of Flowering Plants, vol. 2 - Dicotyledons, Cambridge University Press, London, 1925.
- Ridley, H.N., The Flora of the Malay Peninsula, vol.2, pp. 443-463, L. Reeve & CO., Ltd., London, 1922.
- Stafleu, F.A., and Cowan, R.S., Taxonomic Literature, vol.1 : A-G, Bohn, Scheltema & Holkema, Utrecht, The Netherlands, 2nd ed., 1976.
- Staples, G.W., and Austin, D.F., "Changes in West Indian Operculina (Convolvulaceae)," Brittonia, 33(4), pp. 591-596, 1981.

- Stearn, W.T., Botanical Latin, Redwood Press Limited, Great Britain, 2nd ed., 1973.
- Van Campo, "Pattern of pollen morphological variation within taxa", The Evolutionary Significance of the Exine, pp.125-138, Academic Press, London, 1976.
- Van Ooststroom, S.J., "The Convolvulaceae of Malaysia, I", *Blumea* 3, volume 3, number 1, pp. 63-94. 1938.
- _____. "The Convolvulaceae of Malaysia, II", *Blumea* 3, Number 2, pp. 267-371. 1939.
- _____. "Convolvulaceae," Flora Malesiana (van Steenis, C.G.G.), vol.4, pp. 388-512, Noordhoff international Publishing, Leyden, The Netherlands, 1953.
- Verdcourt, B., "Convolvulaceae," Flora of Tropical East Africa (Hubbard, C.E., and Milne - Redhead, E.), pp. 1-161, Crown Agent for Oversea Governments and Administrations, London, 1963.
- Wodehouse, R.P., Pollen Grains, Hafner Publishing Company, New York, 3rd ed., 1965.

ศูนย์วิทยทรัพยากร
จุฬาลงกรณ์มหาวิทยาลัย

APPENDIX I

AUTHORITIES FOR THE BINOMIALS

Durm.f.

Burman, Johannes (1709-1779)

Dutch physician and botanist at Amsterdam, friend and correspondent of Linnaeus, professor of Botany in Amsterdam at the Hortus medicus from 1728 onward, at the Athenaeum illustre 1755-1777.

Choisy

Choisy, Jacques Denis (1799-1859)

Swiss philosopher, protestant clergyman and botanist.

Dennst.

Dennstedt, August Wilhelm (1776-1826)

German physician and botanist, burgomaster of Magdala, director of the Belvedere garden near Weimar.

G. Don

Don, George (1798-1856)

British plant collector and nurseryman, brother of David Don.

Hall.f.

Hallier, Hans (Johannes) Gottfried (1868-1932)

German botanist who collected in Indonesia and the Philippines and who settled ultimately (Nov.1908) at Leiden; son of Ernst Hallier.

Jacq.

Jacquin, Nicolaus Joseph, Baron von (1727-1817)

Dutch born Austrian botanist; to Paris 1750-1752; from 1752 in Austria; to the West Indies 1755-1759; at Schemnitz 1763-1769; from 1769 professor of botany and chemistry at the University of Vienna;

enobled 1806.

Linn.

Linnaeus, Carl (1707-1778)

Swedish botanist, physician and zoologist; Dr.med.Harderwijk 1753; in the Netherlands 1735-1738, for the greater part of the times as physician to George Clifford at the Hartecamp near Haarlem; from 1738-1741 practicing physician at Stockholm; professor of medicine and botany at Upsala 1741-1778, founder of modern plant systematics and nomenclature.

Linn.f.

Linne', Carl von, filius (1741-1783)

Swedish botanist; studied at Upsala, Dr.med. 1765, professor of medicine and botany ib.1777-1783.

S. Manso

Manso, Antonio Luiz Patricio da Silva (1788-1848)

Brazilian botanist, physician and politician, from 1823 practicing medicine in Cuiaba, Matto Grosso; representative of Matto Grosso in Drazilian parliament 1834-1837; later living in his native town Campinas.

Ooststr.

Ooststroom, Simon Jan van (1906-X)

Dutch botanist; Dr.Phil. Utrecht 1934; assistant at the Botanical Museum Utrecht 1927-1934; from 1934 in various function at the Rijksherbarium, Leiden.

APPENDIX II

THE ORIGIN AND MEANING OF SOME GENERIC NAME AND SOME SPECIFIC EPITHET

ANISEIA Choisy.

(Greek - anisos = unequal , refer to the sepal being unequal.)

- martinicensis (Jacq.) Choisy

(Martinique = name of the island in Carribean sea , West Indies + ensis - Latin suffix = indicates country or place of growth or origin , refer to the first discovering or the origin of this species is in Martinique)

DONAMIA Thou.

- semidigyna (Roxb.) Hall.f.

(Latin - semi = half + Greek - di = two + Greek - gyn = female , refer to the pistil of this species compose of two carpels which cohere at the portion of ovary only , 2 style and 2 stigma)

CUSCUTA Linn.

(New latin - cuscut ; Arabic - cochout = dodder , refer to the common name of Cuscuta)

- chinensis Lamk.

(China + ensis = related to China , refer to the first discovering of this species in China or the origin of this species is in China)

- reflexa Roxb.

(reflexus = reflexed , bent abruptly backwards at more than 90° , refer to the corolla lobe suddenly bent backwards)

EVOLVULUS Linn.

(Latin - *evolve* = to unroll , refer to stem ascending or erect not rolled)

- *alsinoides* (Linn.) Linn.

(Alsine = the generic name of Alsinaceae but now change into Caryophyllaceae and the name Alsine was rejected but used as the subfamily name, Alsinioidea + oides - latin suffix = resembling, refer to this species resembling with Alsine.)

- *nummularius* (Linn.) Linn.

(Latin - *nummularius* = rounded and flat like a coin, refer to the leaves of this species like a coin.)

HEWITTIA Wigh & Arn.

- *scandens* (Milne) Mabberley

(Latin - scandens = climbing, refer to the climbing habit of this species.)

JACQUEMONTIA Choisy

(Honor commemorative name has been given to Victor Jacquemont)

- *paniculata* (Durm.f.) Hall.f.

(Latin - panicl = a tuft ; panicle)

- *pentantha* (Jacq.) G. Don

(Latin - *penta* = five + *Anther* , refer to five stamens.)

MERREMIA Dennstedt.

- *bambusetorum* Kerr

(bambus = bamboo + etorum = denoting in ecology a plant community , refer to this species grow in bamboo forest)

- *collina* S.Y. Liou

(Latin - collinus = pertaining to hills.)

- *emarginata* (Durm.f.) Hall.f.

(Latin - emarginat = without a hem or border , refer to the sepals having a notch at the apex)

- *gemella* (Durm.f.) Hall.f.
(Latin - gemellus = twin-born, paired , refer to dichasium inflorescence)
- *hederacea* (Durm.f.) Hall.f.
(Latin - heder = hедера ; ivy , refer to resembling ivy in habit)
- *hirta* (Linn.) Merr.
(Latin - hirt = hairy , refer to plant cover with hair)
- *kingii* (Prain) Kerr
- *mammosa* (Lour.) Hall.f.
(Latin - mammosus = having large breast-like, refer to the fruits of this species have the nipple-like at the top.)
- *peltata* (Linn.) Merr.
(Greek - pelt = small shield , peltatus = armed with a shield, refer to the peltate leaves of this species)
- *quinata* (R.Br.) Ooststr. comb. nov.
(New Latin - quinat = in five or consisting of five , refer to leaves palmately compound with 5 leaflets of this species)
- *umbellata* (Linn.) Hall.f.
(Latin - umbell , umbel , umbella = dim , a sunshade , refer to the umbelliform inflorescence of this species)
- *vitifolia* (Durm.f.) Hall.f.
(Latin - viti = a vine + Latin - foli = a leaf , refer to this species resembling the vine in leaves shape)

NEUROPELTIS Wall.

- (Latin - neuro = nerve + Latin - pelt = small shield, refer to the enlarged bract which attached to the fruit near the center and having the distinct lateral nerves.)
- *racemosa* Wall.
(Latin - racemose, refer to the raceme inflorescence of this species.)

OPERCULINA S. Manso

(Latin - opercul = a cover , lid , refer to the fruit of this genus is capsule which the upper part of epicarp more or less separating from the lower part and from the endocarp

- petaloidea (Choisy) van Ooststr.

(Greek - petal : petaloideus = petal-like)

- riedeliana (Oliv.) van Ooststr.

- turpethum (Linn.) S. Manso

(Arabic - turbith, refer to the roots of this species containing drug.)

XENOSTEGIA Austin & Staples

- tridentata (Linn.) Austin & Staples , comb. nov.

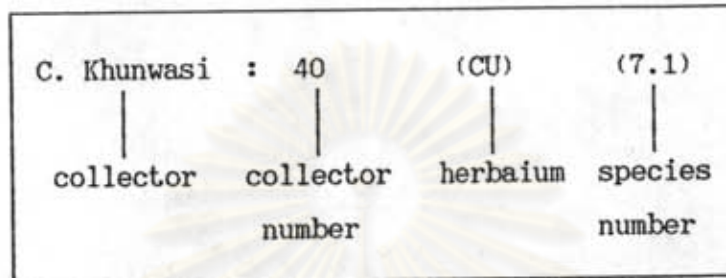
(Greek - tri = three + Latin - dent : dentatus = toothed , refer to the apex of leaves of this species is truncate and has three indentations)

ศูนย์วิทยทรัพยากร
จุฬาลงกรณ์มหาวิทยาลัย

APPENDIX III

SPECIMENS EXAMINATION

example :



- A. Chantanamuck : 76 (DK) (7.11).
 Amphorn : 68 (DKF) (7.12).
 B. Na Songkhla : 570 (CU) (7.5), 581 (CU) (7.11), 606 (CU) (7.12), 607 (CU) (9.3), 608 (CU) (6.1), 609 (CU) (7.11), 618 (CU) (5).
 BS, SP & DN : 1034 (DKF) (7.9).
 Bunchai : 61 (DKF) (9.3), 1002 (DKF) (6.1).
 Dusekom et al : 3383 (DKF) (6.2), 4670 (DKF) (5).
 C. Chermisrivatana : 119 (DK) (10), 344 (DK) (7.11), 669 (DK) (7.7), 1022 (DK) (6.1).
 C. Khunwasi : 23 (CU) (7.4), 24 (CU) (9.3), 25 (CU) (10), 26 (CU) (1), 27 (CU) (7.5), 28 (CU) (7.4), 29 (CU) (7.11), 30 (CU) (6.1), 31 (CU) (9.1), 33 (CU) (7.11), 34 (CU) (5), 35 (CU) (6.1), 36 (CU) (3.1), 37 (CU) (6.2), 38 (CU) (7.11), 39 (CU) (7.3), 40 (CU) (7.1), 41 (CU) (7.6), 42 (CU) (7.2), 43 (CU) (7.9), 44 (CU) (9.2), 45 (CU) (7.7),
 C. Hambananda : 317 (DKF) (7.11).
 C. Phengkhlai et al : 2649 (DKF) (7.6), 3260 (DKF) (8), 3359 (DKF) (7.5), 3426 (DKF) (7.10).

- C. Phusomsaeng : 368 (DKF) (7.9).
- C. Niyomdham et al : 280 (DKF) (4.1).
- D. Dulpeng : 194 (DKF) (2).
- Dee : 353 (DKF) (4.1), 952 (DKF) (7.6).
- D.J. Collins : 1641 (DK) (7.11), 1652 (DK) (7.5), 1653 (DK) (7.11), 2038 (DK) (6.1).
- E. Smith : 150 (DK) (1), 152 (DK) (7.4), 188 (DK) (7.5), 235 (DK) (7.12), 317 (DK) (7.11), 359 (DK) (9.3), 521 (DK) (7.11), 4501 (DK) (3.2).
- Garrett : 251 (DK) (7.4), 270 (DKF) (7.11).
- H.M. Durkill : 1244 (DKF) (4.1), 1261 (DKF) (6.1), 4007 (DKF) (4.1).
- J. Sadakorn : 218 (DK) (7.11).
- Kai Larsen : 33738 (DKF) (1).
- Kanya : 3 (CU) (4.1).
- Kasin : 166 (DK) (10).
- Kerr : 1105-6 (DK) (3.1), 3857 (DK) (7.4), 3862 (DK) (7.3), 5118 (DK) (9.1), 5166 (DK) (7.11), 7829 (DK) (7.11), 9399 (DK) (2), 10427 (DK) (7.7), 10699 (DK) (6.2), 11321 (DK) (10), 13535 (DK) (2), 13569 (DK) (7.11), 13605 (DK) (7.6), 13937 (DK) (7.12), 14734 (DK) (7.6), 15681 (DK) (7.9), 17112 (DK) (7.9), 17704 (DK) (7.1), 19817 (DK) (7.6).
- Khanchai : 777 (DKF) (7.11).
- M.C. Laksanakorn : 323 (DK) (7.11), 455 (DK) (1.1).
- Maxwell : 71-70 (DK) (7.11), 71-730 (DK) (7.2), 72-83 (DK) (7.12), 72-330 (DK) (6.2), 73-19 (DK) (7.11), 73-55 (DK) (3.1), 73-555 (DK) (6.1), 73-660 (DK) (7.5), 74-32 (DK) (7.12), 75-146 (DK) (9.3),

- 85-1067 (DKF) (7.11), 87-170 (DK) (7.5),
s.n. (DK) (5).
- Murata et al : 50398 (DKF) (6.1), 51396 (DKF) (6.1).
- O. Thaithong : 185 (CU) (7.1), 191 (CU) (4.1), 578 (CU)
(3.2).
- Ploenchit : 456 (CU) (4.1).
- P. Nitrasirirak : 242 (DKF) (7.11).
- Pradit : 589 (DK) (6.1), 671 (DK) (7.2).
- Prayod : 516 (DK) (7.11), 760 (DK) (7.11), 1151
(DK) (9.3), 1223 (DK) (7.11), 1224 (DK)
(7.12), 1240 (DK) (7.9), 1647 (DK) (7.11).
- P. Suwanakoset : 1735 (DKF) (10).
- Put : 8 (DK) (10), 1344 (DK) (5), 2412 (DK)
(9.3), 2565 (DK) (7.5), 16924 (DK) (7.4),
s.n. (DK) (7.3), s.n. (DK) (1)
- R. Gusink et P. Hiepko : s.n. (DKF) (10).
- Sakol : 58 (DK) (2), 59 (DK) (7.1), 194 (DK)
(7.6), 204 (DK) (8), 330 (DK) (7.12),
377 (DK) (9.3), 2875 (DK) (8).
- S. Bloembergen : 30 (DKF) (10).
- S + J : 2061 (DK) (6.1).
- Sorensen et al : 14 (DKF) (7.4).
- Staples & Wathaniyakom : 144 (DKF) (7.12), 257 (DKF) (2), 269
(DKF) (2), 287 (DKF) (5.1), 289 (DKF)
(9.2), 291 (DKF) (7.10), 297 (DKF) (7.8)
316 (DKF) (7.3), 337 (DKF) (1), 340
(DKF) (7.4), 347 (DKF) (7.5), 351 (DKF)
(10.1), 352 (DKF) (7.11), 403 (DKF) (7.2),
411 (DKF) (7.5).
- Supachai : 799 (CU) (4.2).
- T. Koyama : 15543 (DKF) (7.7).
- TPDS : 1224 (DKF) (7.12).
- T. Piyakarn : 4 (DK) (7.5).

- T. Santisuk : 2733 (DKF) (4.1), 6897 (DKF) (7.12).
- T. Smitinand : 1218 (DKF) (7.10), 3527 (DKF) (2).
3896 (DK) (4.1), 4159 (DK) (8), 4441
(DK) (7.3), 5521 (DKF) (7.7), 6209 (DKF)
(2), 7257 (DKF) (2).
- Umpai : 213 (DK) (7.6), 279 (DK) (10), 458
(DK) (5), s.n. (DK) (7.11).
- Vacharapong : 057 (DK) (2), 0124 (DK) (7.11), s.n.
(DK) (5)
- Y. Paisooksantivatana : 571-81 (DK) (7.1), 1846-86 (DK) (7.3),
1950-86 (DK) (6.1), 2179-87 (DK) (7.1),
2067-89 (DK) (5).

ศูนย์วิจัยทรัพยากร
จุฬาลงกรณ์มหาวิทยาลัย

APPENDIX IV

FLORISTIC REGIONS AND PROVINCES OF THAILAND

NORTHERN (N)

- | | |
|-------------------------------|---------------------------|
| 1 Mae Hong Son (แม่ฮ่องสอน) | 2 Chiang Mai (เชียงใหม่) |
| 3 Chiang Rai (เชียงใหม่) | 4 Phayao (พะเยา) |
| 5 Nan (น่าน) | 6 Lamphun (ลำพูน) |
| 7 Lampang (ลำปาง) | 8 Phrae (แพร่) |
| 9 Uttaradit (อุตรดิตถ์) | 10 Tak (ตาก) |
| 11 Sukhothai (สุโขทัย) | 12 Phitsanulok (พิษณุโลก) |
| 13 Kamphaeng Phet (กำแพงเพชร) | 14 Phichit (พิจิตร) |
| 15 Nakhon Sawan (นครสวรรค์) | |

NORTH-EASTERN (NE)

- | | |
|------------------------------|---------------------------|
| 16 Phetchabun (เพชรบูรณ์) | 17 Loei (เลย) |
| 18 Udon Thani (อุดรธานี) | 19 Nong Khai (หนองคาย) |
| 20 Sakon Nakhon (สกลนคร) | 21 Nakhon Phanom (นครพนม) |
| 22 Mukdahan (มุกดาหาร) | 23 Kalasin (กาฬสินธุ์) |
| 24 Maha Sarakham (มหาสารคาม) | 25 Khon Kaen (ขอนแก่น) |

EASTERN (E)

- | | |
|-------------------------|-----------------------------------|
| 26 Chaiyaphum (ชัยภูมิ) | 27 Nakhon Ratchasima (นครราชสีมา) |
| 28 Buri Ram (บุรีรัมย์) | 29 Surin (สุรินทร์) |
| 30 Roi Et (ร้อยเอ็ด) | 31 Yasothorn (ยโสธร) |
| 32 Si Sa Ket (ศรีสะเกษ) | 33 Ubon Ratchathani (อุบลราชธานี) |

SOUTH-WESTERN (SW)

- | | |
|--|-----------------------------|
| 34 Uthai Thani (อุทัยธานี) | 35 Kanchanaburi (กาญจนบุรี) |
| 36 Ratchaburi (ราชบุรี) | 37 Phetchaburi (เพชรบุรี) |
| 38 Prachuap Khiri Khan (ประจวบคีรีขันธ์) | |

CENTRAL (C)

- | | |
|------------------------|--------------------------------|
| 39 Chai Nat (ชัยนาท) | 40 Sing Buri (สิงห์บุรี) |
| 41 Lop Buri (ลพบุรี) | 42 Suphan Buri (สุพรรณบุรี) |
| 43 Ang Thong (อ่างทอง) | 44 Ayutthaya (พระนครศรีอยุธยา) |

- 45 Saraburi (สระบุรี)
 47 Nakhon Pathom (นครปฐม)
 49 Nonthaburi (นนทบุรี)
 51 Samut Prakan (สมุทรปราการ)
 53 Samut Sakhon (สมุทรสาคร)

- 46 Nakhon Nayok (นครนายก)
 48 Pathum Thani (ปทุมธานี)
 50 Bangkok (กรุงเทพมหานคร)
 52 Samut Songkhram (สมุทรสงคราม)

SOUTH-EASTERN (SE)

- 54 Prachin Buri (ปราจีนบุรี)
 56 Chon Buri (ชลบุรี)
 58 Chanthaburi (จันทบุรี)

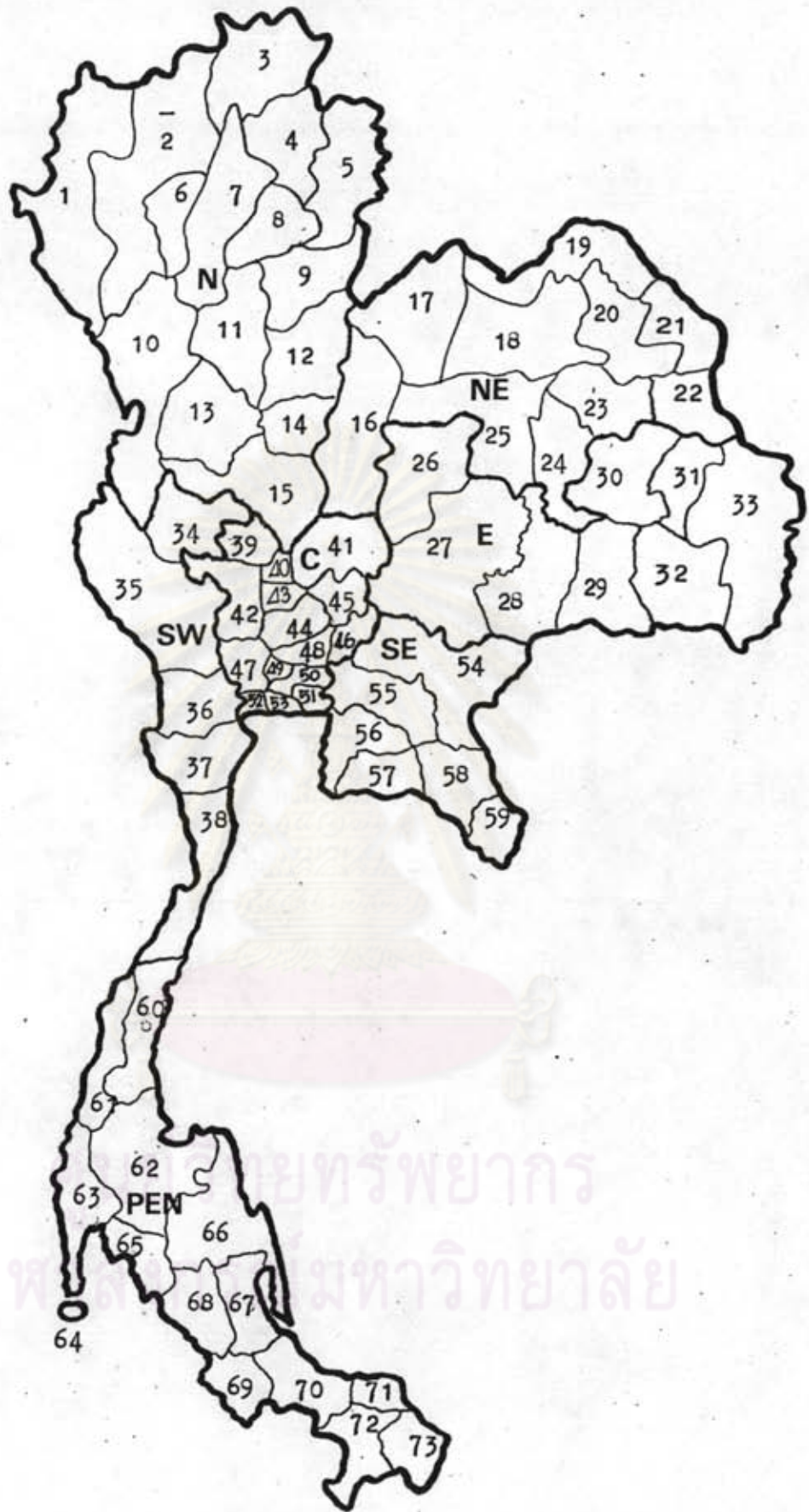
- 55 Chachoengsao (ฉะเชิงเทรา)
 57 Rayong (ระยอง)
 59 Trat (ตราด)

PENINSULAR (PEN)

- 60 Chumphon (ชุมพร)
 62 Surat Thani (สุราษฎร์ธานี)
 64 Phuket (ภูเก็ต)
 66 Nakhon Si Thammarat (นครศรีธรรมราช)
 67 Phatthalung (พัทลุง)
 69 Satun (สตูล)
 71 Pattani (ปัตตานี)
 73 Narathiwat (นราธิวาส)

- 61 Ranong (ระนอง)
 63 Phangnga (พังงา)
 65 Krabi (กระบี่)
 68 Trang (ตรัง)
 70 Songkhla (สงขลา)
 72 Yala (ยะลา)

ศูนย์วิทยทรัพยากร
 จุฬาลงกรณ์มหาวิทยาลัย



FLORISTIC REGIONS AND PROVINCES OF THAILAND

APPENDIX V

ABBREVIATIONS

BK	The Herbarium of Department of Agriculture
DKF	The Forest Herbarium, Royal Forest Department
ca	about
cm	centimetre
CU	The Kasin Suvatabhandhu Herbarium, Botany Department, Faculty of Science, Chulalongkorn University
Fig.	Figure
id.	the same
i.e.	that is
mm	millimetre
TEM	Transmission Electron Microscope
var.	variety
2-3 by 4-5 cm	2 to 3 cm long and 4-5 cm broad

ศูนย์วิทยทรัพยากร
จุฬาลงกรณ์มหาวิทยาลัย



VITA

Mr. Chumpol Khunwasi was born on June 25, 1965, in Khon Kaen Province. He was graduated from Chulalongkorn University with Bachelor of Science in Botany in 1987, then continued his study for Master of Science in the Department of Botany, Chulalongkorn University from 1987-1990.



ศูนย์วิทยทรัพยากร
จุฬาลงกรณ์มหาวิทยาลัย