

## REFERENCES

- Addiss DG, Beach MJ, Streit TG, Lutwick S, LeConte FH, Lafontant JG, Hightower AW, Lammie PJ. Randomised placebo-controlled comparison of ivermectin and albendazole alone and in combination for *Wuchereria bancrofti* microfilaraemia in Haitian children. **Lancet** 1997; 350: 480–484.
- Anderson NG, Anderson NL. Twenty years of two-dimensional electrophoresis: past, present and future. **Electrophoresis** 1996; 17(3): 443-453.
- Anderson NL, Anderson NG. Proteome and proteomics: new technologies, new concepts, and new words. **Electrophoresis** 1998; 19(11): 1853-1861.
- Anderson RC, Bain O. Keys to genera of the order Spirurida. In: CIH Keys to the Nematode Parasites of Vertebrates (RC Anderson, AG Chabaud and S Willmott, eds) 1976; 3: 59–116. **London: Commonwealth Agricultural Bureaux.**
- Ariel N, Zvi A, Makarova KS, Chitlaru T, Elhanany E, Velan B, Cohen S, Friedlander AM, Shafferman A. Genome-based bioinformatic selection of chromosomal *Bacillus anthracis* putative vaccine candidates coupled with proteomic identification of surface-associated antigens. **Infect Immun** 2003; 71(8): 4563-4579.
- Babu BV, Rath K, Kerketta AS, Swain BK, Mishra S, Kar SK. Adverse reactions following mass drug administration during the Programme to Eliminate Lymphatic Filariasis in Orissa State, India. **Trans R Soc Trop Med Hyg** 2006; 100(5): 464-469.
- Bain O, Chabaud AG. Atlas of infective larvae of filariae. **Trop Med Parasitol** 1986; 37(3): 301-340.
- Bandi C, Anderson TJC, Genchi C, Blaxter ML. Phylogeny of *Wolbachia* in filarial nematodes. **Proc Biol Sci** 1998; 265(1413): 2407-2413.

- Bandi C, McCall JW, Genchi C, Corona S, Venco L, Sacchi L. Effects of tetracycline on the filarial worms *Brugia pahangi* and *Dirofilaria immitis* and their bacterial endosymbionts *Wolbachia*. **Int J Parasitol** 1999; 29(2): 357-364.
- Bandi C, Trees AJ, Brattig NW. *Wolbachia* in filarial nematodes: evolutionary aspects and implications for the pathogenesis and treatment of filarial diseases. **Vet Parasitol** 2001; 98(1-3): 215-238.
- Bandi C, Bourtzis K, Braig H, Lo N, O'Neill S, Stouthamer R, Vandekerckove TTM, Werren JH. Towards a nomenclatural system for intracellular *Wolbachia* bacteria infecting arthropods and nematodes—a discussion paper. 2003 **URL: <http://www.wolbachia.sols.uq.edu.au/index.html>**.
- Bandow JE, Becher D, Buttner K, Hochgrafe F, Freiberg C, Brotz H, Hecker M. The role of peptide deformylase in protein biosynthesis: a proteomic study. **Proteomics** 2003a; 3(3): 299-306.
- Bandow JE, Brotz H, Leichert LI, Labischinski H, Hecker M. Proteomic approach to understanding antibiotic action. **Antimicrob Agents Chemother** 2003b; 47(3): 948-955.
- Baumann P, Lai C, Baumann L, Rouhbakhsh D, Moran NA, Clark MA. Mutualistic associations of aphids and prokaryotes: biology of the genus *Buchnera*. **Appl Environ Microbiol** 1995; 61(1): 1-7.
- Bazzocchi C, Ceciliani F, McCall JW, Ricci I, Genchi C, Bandi C. Antigenic role of the endosymbionts of filarial nematodes: IgG response against the *Wolbachia* surface protein in cats infected with *Dirofilaria immitis*. **Proc Biol Sci** 2000; 267(1461): 2511-2516.
- Bazzocchi C, Genchi C, Paltrinieri S, Lecchi C, Mortarino M, Bandi C. Immunological role of the endosymbionts of *Dirofilaria immitis*: the *Wolbachia* surface protein activates canine neutrophils with production of IL-8. **Vet Parasitol** 2003; 117(1-2): 73-83.

- Beard CB, O'Neill SL, Tesh RB, Richards FF, Aksoy S. Modification of arthropod vector competence via symbiotic bacteria. **Parasitol Today** 1993; 9(5): 179-183.
- Behbehani K. Candidate parasitic diseases. **Bull World Health Organ** 1998; 76 Suppl 2: 64-67.
- Benz I, Schmidt MA. Never say never again: protein glycosylation in pathogenic bacteria. **Mol Microbiol** 2002; 45(2): 267-276.
- Berg P. Origins of the human genome project: why sequence the human genome when 96% of it is junk? **Am J Hum Genet** 2006; 79(4): 603-605.
- Biron DG, Moura H, Marche L, Hughes AL, Thomas F. Towards a new conceptual approach to "parasitoproteomics". **Trends Parasitol** 2005; 21(4): 162-168.
- Bischoff R, Luider TM. Methodological advances in the discovery of protein and peptide disease markers. **J Chromatogr B Analyt Technol Biomed Life Sci** 2004; 803: 27-40.
- Bjellqvist B, Basse B, Olsen E, Celis JE. Reference points for comparisons of two-dimensional maps of proteins from different human cell types defined in a pH scale where isoelectric points correlate with polypeptide compositions. **Electrophoresis** 1994; 15: 529-539.
- Bloom BR. Genome sequences. A microbial minimalist. **Nature** 1995; 378(6554): 236.
- Bordenstein SR, Fitch DHA, Werren JH. Absence of *Wolbachia* in nonfilariid nematodes. **J Nematology** 2003; 35: 266-270.
- Bordenstein S, Rosengaus RB. Discovery of a novel *Wolbachia* super group in Isoptera. **Curr Microbiol** 2005; 51(6): 393-398.
- Brattig NW, Buttner DW, Hoerauf A. Neutrophil accumulation around *Onchocerca* worms and chemotaxis of neutrophils are dependent on *Wolbachia* endobacteria. **Microbes Infect** 2001; 3(6): 439-446.

- Brattig NW, Bazzocchi C, Kirschning CJ, Reiling N, Buttner DW, Cecilian F, Geisinger F, Hochrein H, Ernst M, Wagner H, Bandi C, Hoerauf A. The major surface protein of *Wolbachia* endosymbionts in filarial nematodes elicits immune responses through TLR2 and TLR4. **J Immunol** 2004; 173(1): 437-445.
- Buey RM, Diaz JF, Andreu JM. The nucleotide switch of tubulin and microtubule assembly: a polymerization-driven structural change. **Biochemistry** 2006; 45(19): 5933-5938.
- Burri H, Loutan L, Kumaraswami V, Vijayasekaran V. Skin changes in chronic lymphatic filariasis. **Trans R Soc Trop Med Hyg** 1996; 90(6): 671-674.
- Buttner DW, Wanji S, Bazzocchi C, Bain O, Fischer P. Obligatory symbiotic *Wolbachia* endobacteria are absent from *Loa loa*. **Filaria J** 2003; 2(1): 10.
- Casiraghi M, Anderson TJC, Bandi C, Bazzocchi C, Genchi C. A phylogenetic analysis of filarial nematodes: comparison with the phylogeny of *Wolbachia* endosymbionts. **Parasitology** 2001; 122: 93-103.
- Casiraghi M, Bain O, Guerrero R, Martin C, Pocacqua V, Gardner SL, Franceschi A, Bandi C. Mapping the presence of *Wolbachia pipientis* on the phylogeny of filarial nematodes: evidence for symbiont loss during evolution. **Int J Parasitol** 2004; 34: 191-203.
- Chao CC, Wu SL, Ching WM. Using LC-MS with de novo software to fully characterize the multiple methylations of lysine residues in a recombinant fragment of an outer membrane protein from a virulent strain of *Rickettsia prowazekii*. **Biochim Biophys Acta** 2004; 1702(2): 145-152.
- Chuang T, Ulevitch RJ. Identification of hTLR10: a novel human Toll-like receptor preferentially expressed in immune cells. **Biochim Biophys Acta** 2001; 1518(1-2): 157-161.

- Cooray GH. Some observations on filarial infection in Ceylon with special reference to its histopathology. **Indian J Malariol** 1960; 14: 617-632.
- Cordaux R, Michel-Salzat A, Frelon-Raimond M, Rigaud T, Bouchon D. Evidence for a new feminizing *Wolbachia* strain in the isopod *Armadillidium vulgare*: evolutionary implications. **Heredity** 2004; 93(1): 78-84.
- Cordwell SJ, Nouwens AS, Walsh BJ. Comparative proteomics of bacterial pathogens. **Proteomics** 2001; 1(4): 461-472.
- Craig EA, Gambill BD, Nelson RJ. Heat shock proteins: molecular chaperones of protein biogenesis. **Microbiol Rev** 1993; 57: 402-414.
- Cross HF, Haarbrink M, Egerton G, Yazdanbakhsh M, Taylor MJ. Severe reactions to filarial chemotherapy and release of *Wolbachia* endosymbionts into blood. **Lancet** 2001; 358: 1873-1875.
- D'Ambrosio C, Salzano AM, Arena S, Renzone G, Scaloni A. Analytical methodologies for the detection and structural characterization of phosphorylated proteins. **J Chromatogr B Analyt Technol Biomed Life Sci** 2006; [Epub ahead of print].
- Das BK, Sahoo PK, Ravindran B. A role for tumour necrosis factor-alpha in acute lymphatic filariasis. **Parasite Immunol** 1996; 18(8): 421-424.
- DiGiuseppe TG, Hudgens JW, Lin MC. Multiphoton ionization of methyl radicals in the gas phase. **J Phys Chem** 1982; 86: 36-41.
- Dimock KA, Eberhard ML, Lammie PJ. Th1-like antifilarial immune responses predominate in antigen-negative persons. **Infect Immun** 1996; 64(8): 2962-2967.
- Dinarello CA. Role of pro- and anti-inflammatory cytokines during inflammation: experimental and clinical findings. **J Biol Regul Homeost Agents** 1997; 11: 91-103.

- Dissanayake S, Watawana L, Piessens WF. Lymphatic pathology in *Wuchereria bancrofti* microfilaraemic infections. **Trans R Soc Trop Med Hyg** 1995; 89(5): 517-521.
- Dreyer G, Ottesen EA, Galdino E, Andrade L, Rocha A, Medeiros Z, Moura I, Casimiro I, Beliz F, Coutinho A. Renal abnormalities in microfilaremic patients with Bancroftian filariasis. **Am J Trop Med Hyg** 1992; 46(6): 745-751.
- Dreyer G, Pires ML, de Andrade LD, Lopes E, Medeiros Z, Tenorio J, Coutinho A, Noroes J, Figueredo-Silva J. Tolerance of diethylcarbamazine by microfilaraemic and amicrofilaraemic individuals in an endemic area of Bancroftian filariasis, Recife, Brazil. **Trans R Soc Trop Med Hyg** 1994; 88(2): 232-236.
- Dreyer G, Amaral F, Noroes J, Medeiros Z, Addiss D. A new tool to assess the adulticidal efficacy in vivo of antifilarial drugs for bancroftian filariasis. **Trans R Soc Trop Med Hyg** 1995; 89(2): 225-226.
- Dreyer G, Santos A, Noroes J, Rocha A, Addiss D. Amicrofilaraemic carriers of adult *Wuchereria bancrofti*. **Trans R Soc Trop Med Hyg** 1996; 90(3): 288-289.
- Dreyer G, Noroes J, Addiss D, Santos A, Medeiros Z, Figueredo-Silva J. Bancroftian filariasis in a paediatric population: an ultrasonographic study. **Trans R Soc Trop Med Hyg** 1999; 93(6): 633-636.
- Dreyer G, Medeiros Z, Netto MJ, Leal NC, de Castro LG, Piessens WF. Acute attacks in the extremities of persons living in an area endemic for bancroftian filariasis: differentiation of two syndromes. **Trans R Soc Trop Med Hyg** 1999; 93(4): 413-417.
- Dreyer G, Noroes J, Figueredo-Silva J, Piessens WF. Pathogenesis of lymphatic disease in bancroftian filariasis: a clinical perspective. **Parasitol Today** 2000; 16(12): 544-548.

- Dreyer G, Addiss D, Roberts J, Noroes J. Progression of lymphatic vessel dilatation in the presence of living adult *Wuchereria bancrofti*. **Trans R Soc Trop Med Hyg** 2002; 96(2): 157-161.
- Du X, Poltorak A, Wei Y, Beutler B. Three novel mammalian toll-like receptors: gene structure, expression, and evolution. **Eur Cytokine Netw** 2000; 11(3): 362-371.
- Dubendorff JW, Studier FW. Controlling basal expression in an inducible T7 expression system by blocking the target T7 promoter with lac repressor. **J Mol Biol** 1991; 219(1): 45-59.
- Dumler JS, Barbet AF, Bekker CP, Dasch GA, Palmer GH, Ray SC, Rikihisa Y, Rurangirwa FR. Reorganization of genera in the families Rickettsiaceae and Anaplasmataceae in the order Rickettsiales: unification of some species of *Ehrlichia* with *Anaplasma*, *Cowdria* with *Ehrlichia* and *Ehrlichia* with *Neorickettsia*, descriptions of six new species combinations and designation of *Ehrlichia equi* and 'HGE agent' as subjective synonyms of *Ehrlichia phagocytophila*. **Int J Syst Evol Microbiol** 2001; 51(Pt 6): 2145-2165.
- Egyed Z, Sreter T, Szell Z, Nyiro G, Marialigeti K, Varga I. Molecular phylogenetic analysis of *Onchocerca lupi* and its *Wolbachia* endosymbiont. **Vet Parasitol** 2002; 108(2): 153-161.
- Emini EA, Hughes JV, Perlow DS, Boger J. Induction of hepatitis A virus-neutralizing antibody by a virus-specific synthetic peptide. **J Virol** 1985; 55(3): 836-839.
- Engel LW. The Human Genome Project. History, goals, and progress to date. **Arch Pathol Lab Med** 1993; 117(5): 459-465.
- Esterre P, Plichart C, Huin-Blondely MO, Nguyen L. Role of streptococcal infection in the acute pathology of lymphatic filariasis. **Parasite** 2000; 7(2): 91-94.
- Evers SK, Di Padova M, Meyer H, Langen M, Fountoulakis W, Keck CP Gray. Mechanism-related changes in the gene transcription and protein synthesis

- patterns of *Haemophilus influenzae* after treatment with transcriptional and translational inhibitors. **Proteomics** 2001; 1: 522–544.
- Fenn K, Blaxter M. Quantification of *Wolbachia* bacteria in *Brugia malayi* through the nematode lifecycle. **Mol Biochem Parasitol** 2004a; 137(2): 361-364.
- Fenn K, Blaxter M. Are filarial nematode *Wolbachia* obligate mutualist symbionts? **Trends Ecol Evol** 2004b; 19(4): 163-166.
- Fenn K, Blaxter M. *Wolbachia* genomes: revealing the biology of parasitism and mutualism. **Trends Parasitol** 2006; 22(2): 60-65.
- Fenselau C. MALDI MS and strategies for protein analysis. **Anal Chem** 1997; 69(21): 661A-665A.
- Figueredo-Silva J, Jungmann P, Noroes J, Piessens WF, Coutinho A, Brito C, Rocha A, Dreyer G. Histological evidence for adulticidal effect of low doses of diethylcarbamazine in bancroftian filariasis. **Trans R Soc Trop Med Hyg** 1996; 90(2): 192-194.
- Figueredo-Silva J, Jungmann P, Noroes J, Piessens WF, Coutinho A, Brito C, Rocha A, Dreyer G. Histological evidence for adulticidal effect of low doses of diethylcarbamazine in bancroftian filariasis. **Trans R Soc Trop Med Hyg** 1996; 90(2): 192-194.
- Figueredo-Silva J, Noroes J, Cedenho A, Dreyer G. The histopathology of bancroftian filariasis revisited: the role of the adult worm in the lymphatic-vessel disease. **Ann Trop Med Parasitol** 2002; 96(6): 531-541.
- Fischer P, Wibowo H, Pischke S, Ruckert P, Liebau E, Ismid IS, Supali, T. PCR-based detection and identification of the filarial parasite *Brugia timori* from Alor Island, Indonesia. **Ann Trop Med Parasitol** 2002; 96: 809–821.
- Fischer P, Bonow I, Buttner DW, Kamal IH, Liebau E. An aspartate aminotransferase of *Wolbachia* endobacteria from *Onchocerca volvulus* is recognized by IgG1 antibodies from residents of endemic areas. **Parasitol Res** 2003; 90(1): 38-47.



- Fischer P, Supali T, Maizels RM. Lymphatic filariasis and *Brugia timori*: prospects for elimination. **Trends Parasitol** 2004; 20(8): 351-355.
- Foster J, Ganatra M, Kamal I, Ware J, Makarova K, Ivanova N, Bhattacharyya A, Kapatral V, Kumar S, Posfai J, Vincze T, Ingram J, Moran L, Lapidus A, Omelchenko M, Kyrpides N, Ghedin E, Wang S, Goltsman E, Joukov V, Ostrovskaya O, Tsukerman K, Mazur M, Comb D, Koonin E, Slatko B. The *Wolbachia* genome of *Brugia malayi*: endosymbiont evolution within a human pathogenic nematode. **PLoS Biol** 2005; 3(4): e121.
- Freedman DO, de Almeida Filho PJ, Besh S, Maia e Silva MC, Braga C, Maciel A. Lymphoscintigraphic analysis of lymphatic abnormalities in symptomatic and asymptomatic human filariasis. **J Infect Dis** 1994; 170(4): 927-933.
- Freedman DO. Immune dynamics in the pathogenesis of human lymphatic filariasis. **Parasitol Today** 1998; 14: 229-234.
- Galindo L, Von Lichtenberg F, Baldizon C. Bancroftian filariasis in Puerto Rico: infection pattern and tissue lesions. **Am J Trop Med Hyg** 1962; 11: 739-748.
- Garcia LS. Filarial nematodes. In Garcia LS. Diagnostic Medical Parasitology 4<sup>th</sup> edition. **Washington DC: ASM press** 2001; 329-362.
- Gerstein M, Lan N, Jansen R. Proteomics. Integrating interactomes. **Science** 2002; 295(5553): 284-287.
- Gharahdaghi F, Weinberg CR, Meagher DA, Imai BS, Mische SM. Mass spectrometric identification of proteins from silver-stained polyacrylamide gel: a method for the removal of silver ions to enhance sensitivity. **Electrophoresis** 1999; 20(3): 601-605.
- Gillette-Ferguson I, Hise AG, McGarry HF, Turner J, Esposito A, Sun Y, Diaconu E, Taylor MJ, Pearlman E. *Wolbachia*-induced neutrophil activation in a mouse model of ocular onchocerciasis (river blindness). **Infect Immun** 2004; 72(10): 5687-5692.

- Griffin TJ, Tang W, Smith LM. Genetic analysis by peptide nucleic acid affinity MALDI-TOF mass spectrometry. **Nat Biotechnol** 1997; 15(13): 1368-1372.
- Grobusch MP, Kombila M, Autenrieth I, Mehlhorn H, Kreamsner PG. No evidence of *Wolbachia* endosymbiosis with *Loa loa* and *Mansonella perstans*. **Parasitol Res** 2003; 90(5): 405-408.
- Guillot A, Gitton C, Anglade P, Mistou MY. Proteomic analysis of *Lactococcus lactis*, a lactic acid bacterium. **Proteomics** 2003; 3(3): 337-354.
- Gupta RS. Evolution of the chaperonin families (Hsp60, Hsp10 and Tcp-1) of proteins and the origin of eukaryotic cells. **Mol Microbiol** 1995; 15: 1-11.
- Gyapong JO, Gyapong M, Evans DB, Aikins MK, Adjei S. The economic burden of lymphatic filariasis in northern Ghana. **Ann Trop Med Parasitol** 1996; 90(1): 39-48.
- Gygi SP, Rist B, Aebersold R. Measuring gene expression by quantitative proteome analysis. **Curr Opin Biotechnol** 2000; 11(4): 396-401.
- Haarbrink M, Terhell AJ, Abadi GK, Mitsui Y, Yazdanbakhsh M. Inflammatory cytokines following diethylcarbamazine (DEC) treatment of different clinical groups in lymphatic filariasis. **Trans R Soc Trop Med Hyg** 1999; 93(6): 665-672.
- Haarbrink M, Abadi GK, Buurman WA, Dentener MA, Terhell AJ, Yazdanbakhsh M. Strong association of interleukin-6 and lipopolysaccharide-binding protein with severity of adverse reactions after diethylcarbamazine treatment of microfilaremic patients. **J Infect Dis** 2000; 182(2): 564-569.
- Haberkorn U, Altmann A, Eisenhut M. Functional genomics and proteomics--the role of nuclear medicine. **Eur J Nucl Med Mol Imaging** 2002; 29(1): 115-132.
- Haine ER, Cook JM. Convergent incidences of *Wolbachia* infection in fig wasp communities from two continents. **Proc Biol Sci** 2005; 272(1561): 421-429.
- Hardy J. The human genome is sequenced: what does it mean and why is it important? **Arch Neurol** 2001; 58(11): 1748-1749.

- Hartmann N, Stuckas H, Lucius R, Bleiss W, Theuring F, Kalinna BH. Trans-species transfer of *Wolbachia*: microinjection of *Wolbachia* from *Litomosoides sigmodontis* into *Acanthocheilonema viteae*. **Parasitology** 2003; 126(Pt 6): 503-511.
- Harvey DJ. Matrix-assisted laser desorption/ionisation mass spectrometry of oligosaccharides and glycoconjugates. **J Chromatogr A** 1996; 720(1-2): 429-446.
- Hecker M. A proteomic view of cell physiology of *Bacillus subtilis*—bringing the genome sequence to life. **Adv Biochem Eng Biotechnol** 2003; 83: 57–92.
- Hemmi H, Takeuchi O, Kawai T, Kaisho T, Sato S, Sanjo H, Matsumoto M, Hoshino K, Wagner H, Takeda K, Akira S. A Toll-like receptor recognizes bacterial DNA. **Nature** 2000; 408(6813): 740-745.
- Henkle-Duhrsen K, Eckelt VH, Wildenburg G, Blaxter M, Walter RD. Gene structure, activity and localization of a catalase from intracellular bacteria in *Onchocerca volvulus*. **Mol Biochem Parasitol** 1998; 96, 69–81.
- Henzel WJ, Billeci TM, Stults JT, Wong SC, Grimley C, Watanabe C. Identifying proteins from two-dimensional gels by molecular mass searching of peptide fragments in protein sequence databases. **Proc Natl Acad Sci USA** 1993; 90(11): 5011-5015.
- Hoerauf A, Nissen-Pahle K, Schmetz C, Henkle-Duhrsen K, Blaxter ML, Buttner DW, Gallin MY, Al-Qaoud KM, Lucius R, Fleischer B. Tetracycline therapy targets intracellular bacteria in the filarial nematode *Litomosoides sigmodontis* and results in filarial infertility. **J Clin Invest** 1999; 103(1): 11-18.
- Hoerauf A, Volkmann L, Hamelmann C, Adjei O, Autenrieth IB, Fleischer B, Buttner DW. Endosymbiotic bacteria in worms as targets for a novel chemotherapy in filariasis. **Lancet** 2000; 355(9211): 1242-1243.

- Hoerauf A, Mand S, Adjei O, Fleischer B, Buttner DW. Depletion of *Wolbachia* endobacteria in *Onchocerca volvulus* by doxycycline and microfilaridermia after ivermectin treatment. **Lancet** 2001; 357(9266): 1415-1416.
- Hoerauf A, Mand S, Fischer K, Kruppa T, Marfo-Debrekyei Y, Debrah AY, Pfarr KM, Adjei O, Buttner DW. Doxycycline as a novel strategy against bancroftian filariasis-depletion of *Wolbachia* endosymbionts from *Wuchereria bancrofti* and stop of microfilaria production. **Med Microbiol Immunol (Berl)** 2003a; 192(4): 211-216.
- Hoerauf A, Mand S, Volkmann L, Buttner M, Marfo-Debrekyei Y, Taylor M, Adjei O, Buttner DW. Doxycycline in the treatment of human onchocerciasis: Kinetics of *Wolbachia* endobacteria reduction and of inhibition of embryogenesis in female *Onchocerca* worms. **Microbes Infect** 2003b; 5(4): 261-273.
- Hood DW. The utility of complete genome sequences in the study of pathogenic bacteria. **Parasitology** 1999; 118 Suppl: S3-S9.
- Hoorn EJ, Hoffert JD, Knepper MA. The application of DIGE-based proteomics to renal physiology. **Nephron Physiol** 2006; 104(1): 61-72.
- Huigens ME, de Almeida RP, Boons PA, Luck RF, Stouthamer R. Natural interspecific and intraspecific horizontal transfer of parthenogenesis-inducing *Wolbachia* in *Trichogramma* wasps. **Proc Biol Sci** 2004; 271(1538): 509-515.
- Hume DA, Underhill DM, Sweet MJ, Ozinsky AO, Liew FY, Aderem A. Macrophages exposed continuously to lipopolysaccharide and other agonists that act via toll-like receptors exhibit a sustained and additive activation state. **BMC Immunol** 2001; 2: 11.
- Hurst GB, Doktycz MJ, Vass AA, Buchanan MV. Detection of bacterial DNA polymerase chain reaction products by matrix-assisted laser desorption/ionization mass spectrometry. **Rapid Commun Mass Spectrom** 1996; 10(3): 377-382.

- Ismail M, Jayakody RL, Weil G, Nirmalan N, Jayasinghe K, Abeyewickrema W, Rezvi Sheriff M, Rajaratnam H, Amarasekera N, de Silva D, Michalski M, Dissanaike A. Efficacy of single dose combinations of albendazole, ivermectin and diethylcarbamazine for the treatment of Bancroftian filariasis. **Trans R Soc Trop Med Hyg** 1998; 92: 94-97.
- James P, Quadroni M, Carafoli E, Gonnet G. Protein identification by mass profile fingerprinting. **Biochem Biophys Res Commun** 1993; 195(1): 58-64.
- Jameson B, Wolf H. The antigenic index: a novel algorithm for predicting antigenic determinants. **Computer Application Bioscience** 1988; 4: 181-186.
- Jayakody RL, de Silva CSS, Weerasinghe WMT. Treatment of Bancroftian filariasis with albendazole: evaluation of efficacy and adverse reactions. **Trop Biomed** 1993; 10: 19-24.
- Jeyaprakash A, Hoy MA. Long PCR improves *Wolbachia* DNA amplification: wsp sequences found in 76% of sixty-three arthropod species. **Insect Mol Biol** 2000; 9(4): 393-405.
- Jungblut PR, Grabher G, Stoffler G. Comprehensive detection of immunorelevant *Borrelia garinii* antigens by two-dimensional electrophoresis. **Electrophoresis** 1999; 20(18): 3611-3622.
- Jungmann P, Figueredo-Silva J, Dreyer G. Bancroftian lymphadenopathy: a histopathologic study of fifty-eight cases from northeastern Brazil. **Am J Trop Med Hyg** 1991; 45(3): 325-331.
- Jungmann P, Figueredo-Silva J, Dreyer G. Bancroftian lymphangitis in northeastern Brazil: a histopathological study of 17 cases. **Am J Trop Med Hyg** 1992; 95(2): 114-118.
- Karas M, Hillenkamp F. Laser desorption ionization of proteins with molecular masses exceeding 10,000 daltons. **Anal Chem** 1988; 60(20): 2299-2301.
- Karas M. Matrix-assisted laser desorption ionization MS: a progress report. **Biochem Soc Trans** 1996; 24(3): 897-900.

- Keiser PB, Reynolds SM, Awadzi K, Ottesen EA, Taylor MJ, Nutman TB. Bacterial endosymbionts of *Onchocerca volvulus* in the pathogenesis of posttreatment reactions. **J Infect Dis** 2002; 185(6): 805-811.
- King CL, Mahanty S, Kumaraswami V, Abrams JS, Regunathan J, Jayaraman K, Ottesen EA, Nutman TB. Cytokine control of parasite-specific anergy in human lymphatic filariasis. Preferential induction of a regulatory T helper type 2 lymphocyte subset. **J Clin Invest** 1993; 92(4): 1667-1673.
- Kozek WJ. Transovarially-transmitted intracellular microorganisms in adult and larval stages of *Brugia malayi*. **J Parasitol** 1977; 63(6): 992-1000.
- Kozek WJ, Marroquin HF. Intracytoplasmic bacteria in *Onchocerca volvulus*. **Am J Trop Med Hyg** 1977; 26(4): 663-678.
- Kozek WJ. What is new in the *Wolbachia/Dirofilaria* interaction? **Vet Parasitol** 2005; 133(2-3): 127-132.
- Kennelly PJ. Protein kinases and protein phosphatases in prokaryotes: a genomic perspective. **FEMS Microbiol Lett** 2002; 206: 1-8.
- Kyte J, Doolittle RF. A simple method for displaying the hydropathic character of a protein. **J Mol Bio** 1982; 157: 105-132.
- Laemmli UK. Cleavage of structural proteins during the assembly of the head of bacteriophage T4. **Nature** 1970; 227(5259): 680-685.
- Langworthy NG, Renz A, Mackenstedt U, Henkle-Duhrsen K, de Bronsvort MB, Tanya VN, Donnelly MJ, Trees AJ. Macroparasiticide activity of tetracycline against the filarial nematode *Onchocerca ochengi*: elimination of *Wolbachia* precedes worm death and suggests a dependent relationship. **Proc Biol Sci** 2000; 267(1448): 1063-1069.
- Lawrence RA. Lymphatic filariasis: what mice can tell. **Parasitol Today** 1996; 12: 267-271.
- Lee CC. *Dirofilaria immitis*: ultrastructural aspects of oocyte development and zygote formation. **Exp Parasitol** 1975; 37(3): 449-468.

- Lee AY, Park BC, Jang M, Cho S, Lee DH, Lee SC, Myung PK, Park SG. Identification of caspase-3 degradome by two-dimensional gel electrophoresis and matrix-assisted laser desorption/ionization-time of flight analysis. **Proteomics** 2004; 4(11): 3429-3436.
- Lichtenberg F. The early phase of endemic bancroftian filariasis in the male; pathological study. **J Mt Sinai Hosp N Y** 1957; 24(6): 983-1000.
- Little PF. Structure and function of the human genome. **Genome Res** 2005; 15(12): 1759-1766.
- Liu H, Mardahl-Dumesnil M, Sweeney ST, O'Kane CJ, Bernstein SI. *Drosophila* paramyosin is important for myoblast fusion and essential for myofibril formation. **J Cell Biol** 2004; 167(4): 783.
- Lo N, Casiraghi M, Salati E, Bazzocchi C, Bandi C. How many *Wolbachia* supergroups exist? **Mol Biol Evol** 2002; 19(3): 341-346.
- Lopez MF, Pluskal MG. Protein micro- and macroarrays : digitizing the proteome. **J Chromatogr B Analyt Technol Biomed Life Sci** 2003; 787(1): 19-27.
- Mahanty S, Abrams JS, King CL, Limaye AP, Nutman TB. Parallel regulation of IL-4 and IL-5 in human helminth infections. **J Immunol** 1992; 148(11): 3567-3571.
- Mahanty S, King CL, Kumaraswami V, Regunathan J, Maya A, Jayaraman K, Abrams JS, Ottesen EA, Nutman TB. IL-4- and IL-5-secreting lymphocyte populations are preferentially stimulated by parasite-derived antigens in human tissue invasive nematode infections. **J Immunol** 1993; 151(7): 3704-3711.
- Mahanty S, Mollis SN, Ravichandran M, Abrams JS, Kumaraswami V, Jayaraman K, Ottesen EA, Nutman TB. High levels of spontaneous and parasite antigen-driven interleukin-10 production are associated with antigen-specific hyporesponsiveness in human lymphatic filariasis. **J Infect Dis** 1996; 173(3): 769-773.

- Maizels RM, Sartono E, Kurniawan A, Partono F, Selkirk ME, Yazdanbakhsh M. T-cell activation and the balance of antibody isotypes in human lymphatic filariasis. **Parasitol Today** 1995; 11(2): 50-56.
- McCarthy JS, Ottesen EA, Nutman TB. Onchocerciasis in endemic and nonendemic populations: differences in clinical presentation and immunologic findings. **J Infect Dis** 1994; 170(3): 736-741.
- Mann M, Hojrup P, Roepstorff P. Use of mass spectrometric molecular weight information to identify proteins in sequence databases. **Biol Mass Spectrom** 1993; 22(6): 338-345.
- McCarthy M. Microbial genome sequencing opens door to new world. **Lancet** 1997; 349(9051): 548.
- McGarry HF, Egerton GL, Taylor MJ. Population dynamics of *Wolbachia* bacterial endosymbionts in *Brugia malayi*. **Mol Biochem Parasitol** 2004; 135(1): 57-67.
- McGraw EA, O'Neill SL. Evolution of *Wolbachia pipientis* transmission dynamics in insects. **Trends Microbiol** 1999; 7(7): 297-302.
- McGraw EA, O'Neill SL. *Wolbachia pipientis*: intracellular infection and pathogenesis in *Drosophila*. **Curr Opin Microbiol** 2004; 7(1): 67-70.
- McLaren DJ, Worms MJ, Laurence BR, Simpson MG. Micro-organisms in filarial larvae (Nematoda). **Trans R Soc Trop Med Hyg** 1975; 69(5-6): 509-514.
- McLaughlin SI, Radday J, Michel MC, Addiss DG, Beach MJ, Lammie PJ, Lammie J, Rheingans R, Lafontant J. Frequency, severity, and costs of adverse reactions following mass treatment for lymphatic filariasis using diethylcarbamazine and albendazole in Leogane, Haiti, 2000. **Am J Trop Med Hyg** 2003; 68(5): 568-573.
- Medzhitov R, Janeway C. Innate immunity. **New Eng J Med** 2000; 343: 338-344.
- Medzhitov R, Janeway CA Jr. Innate immunity: the virtues of a nonclonal system of recognition. **Cell** 1997; 91(3): 295-298.



- Mercot H, Charlat S. *Wolbachia* infections in *Drosophila melanogaster* and *D. simulans*: polymorphism and levels of cytoplasmic incompatibility. **Genetica** 2004; 120(1-3): 51-59.
- Michael E, Bundy DAP, Grenfell BT. Re-assessing the global prevalence and distribution of lymphatic filariasis. **Parasitology** 1996; 112 (Pt4): 409-428.
- Montestruc E, Courmes E, Fontan R. Endemic lymphangitis in French Guiana and its relation to *W. bancrofti* filariasis. **Indian J Malariol** 1960; 14: 637-650.
- Moreau J, Rigaud T. Variable male potential rate of reproduction: high male mating capacity as an adaptation to parasite-induced excess of females? **Proc Biol Sci** 2003; 270(1523): 1535-1540.
- Morel CM. Reaching maturity - 25 years of the TDR. **Parasitol Today** 2000; 16(12): 522-528.
- Mushegian AR, Koonin EV. A minimal gene set for cellular life derived by comparison of complete bacterial genomes. **Proc Natl Acad Sci USA** 1996; 93(19): 10268-10273.
- Ng SK, Tan SH. Discovering protein-protein interactions. **J Bioinform Comput Biol** 2004; 1(4): 711-741.
- Nilsson I, Utt M, Nilsson HO, Ljungh A, Wadstrom T. Two-dimensional electrophoretic and immunoblot analysis of cell surface proteins of spiral-shaped and coccoid forms of *Helicobacter pylori*. **Electrophoresis** 2000; 21(13): 2670-2677.
- Nilsson CL. Bacterial proteomics and vaccine development. **Am J Pharmacogenomics** 2002; 2(1): 59-65.
- Nelson FK, Greiner DL, Shultz, LD and Rajan TV. The immunodeficient SCID mouse as a model for human lymphatic filariasis. **J Exp Med** 1991; 173(3): 659-663.
- Noroës J, Addiss D, Santos A, Medeiros Z, Coutinho A, Dreyer G. Ultrasonographic evidence of abnormal lymphatic vessels in young men with adult *Wuchereria bancrofti* infection in the scrotal area. **J Urol** 1996a; 156(2 Pt 1): 409-412.

- Noroës J, Addiss D, Amaral F, Coutinho A, Medeiros Z, Dreyer G. Occurrence of living adult *Wuchereria bancrofti* in the scrotal area of men with microfilaraemia. **Trans R Soc Trop Med Hyg** 1996b; 90(1): 55-56.
- Noroës J, Dreyer G, Santos A, Mendes VG, Medeiros Z, Addiss D. Assessment of the efficacy of diethylcarbamazine on adult *Wuchereria bancrofti* in vivo. **Trans R Soc Trop Med Hyg** 1997; 91(1): 78-81.
- Nowak R. Genome research. Venter wins sequencing race--twice. **Science** 1995; 268(5215): 1273.
- Nutman TB. Experimental infection of humans with filariae. **Rev Infect Dis** 1991; 13(5): 1018-1022.
- Nutman TB, Kumaraswami V. Regulation of the immune response in lymphatic filariasis: perspectives on acute and chronic infection with *Wuchereria bancrofti* in South India. **Parasite Immunol** 2001; 23(7): 389-399.
- Nuchprayoon S, Yentakam S, Sangprakarn S, Junpee A. Endemic bancroftian filariasis in Thailand: detection by Og4C3 antigen capture ELISA and the polymerase chain reaction. **J Med Assoc Thai** 2001; 84(9): 1300-1307.
- Nuchprayoon S, Porksakorn C, Junpee A, Sanprasert V, Poovorawan Y. Comparative assessment of an Og4C3 ELISA and an ICT filariasis test: a study of Myanmar migrants in Thailand. **Asian Pac J Allergy Immunol** 2003a; 21(4): 253-257.
- Nuchprayoon S, Sanprasert V, Porksakorn C, Nuchprayoon I. Prevalence of bancroftian filariasis on the Thai-Myanmar border. **Asian Pac J Allergy Immunol** 2003b; 21(3): 179-188.
- O'Bryan L, Pinkston P, Kumaraswami V, Vijayan V, Yenokida G, Rosenberg HF, Crystal R, Ottesen EA, Nutman TB. Localized eosinophil degranulation mediates disease in tropical pulmonary eosinophilia. **Infect Immun** 2003; 71(3): 1337-1342.

- O'Connor RA, Jenson JS, Osborne J, Devaney E. An enduring association? Microfilariae and immunosuppression [correction of immunosuppression] in lymphatic filariasis. **Trends Parasitol** 2003; 19(12): 565-570.
- Olszewski WL, Jamal S, Manokaran G, Lukomska B, Kubicka U. Skin changes in filarial and non-filarial lymphoedema of the lower extremities. **Trop Med Parasitol** 1993; 44(1): 40-44.
- Olszewski WL, Jamal S, Manokaran G, Pani S, Kumaraswami V, Kubicka U, Lukomska B, Dworzynski A, Swoboda E, Meisel-Mikolajczyk F. Bacteriologic studies of skin, tissue fluid, lymph, and lymph nodes in patients with filarial lymphedema. **Am J Trop Med Hyg** 1997; 57(1): 7-15.
- O'Neill S, Giordano R, Colbert A, Karr T, Robertson H. 16S rRNA phylogenetic analysis of the bacterial endosymbionts associated with cytoplasmic incompatibility in insects. **PNAS** 1992; 89(7): 2699-2702.
- Ottesen EA, Neva FA, Paranjape RS, Tripathy SP, Thiruvengadam KV, Beaven MA. Specific allergic sensitisation to filarial antigens in tropical eosinophilia syndrome. **Lancet** 1979; 1(8127): 1158-1161.
- Ottesen EA. Efficacy of diethylcarbamazine in eradicating infection with lymphatic dwelling filariae in humans. **Rev Infect Dis** 1985; 7: 341-56.
- Ottesen EA. Description, mechanisms and control of reactions to treatment in the human filariasis. **Ciba Found Symp** 1987; 127: 265-283.
- Ottesen EA. The Wellcome Trust Lecture. Infection and disease in lymphatic filariasis: an immunological perspective. **Parasitology** 1992; 104 Suppl: S71-79.
- Ottesen EA, Nutman TB. Tropical pulmonary eosinophilia. **Annu Rev Med** 1992; 43: 417-424.
- Ottesen EA, Duke BO, Karam M, Behbehani K. Strategies and tools for the control/elimination of lymphatic filariasis. **Bull World Health Organ** 1997; 75(6): 491-503.

- Overbergh L, Valckx D, Waer M, Mathieu C. Quantification of murine cytokine mRNAs using real time quantitative reverse transcriptase PCR. **Cytokine** 1999; 11(4): 305-312.
- Pani SP, Krishnamoorthy K, Rao AS, Prathiba J. Clinical manifestations in malayan filariasis infection with special reference to lymphoedema grading. **Indian J Med Res** 1990; 91: 200-207.
- Pani SP, Yuvaraj J, Vanamail P, Dhanda V, Michael E, Grenfell BT, Bundy DA. Episodic adenolymphangitis and lymphoedema in patients with bancroftian filariasis. **Trans R Soc Trop Med Hyg** 1995; 89(1): 72-74.
- Pappin DJ, Hojrup P, Bleasby AJ. Rapid identification of proteins by peptide-mass fingerprinting. **Curr Biol** 1993; 3(6): 327-332.
- Partono F. The spectrum of disease in lymphatic filariasis. **Ciba Found Symp** 1987; 127: 15-31.
- Plenge-Bonig A, Kromer M, Buttner DW. Light and electron microscopy studies on *Onchocerca jakutensis* and *O. flexuosa* of red deer show different host-parasite interactions. **Parasitol Res** 1995; 81(1): 66-73.
- Pinkston P, Vijayan VK, Nutman TB, Rom WN, O'Donnell KM, Cornelius MJ, Kumaraswami V, Ferrans VJ, Takemura T, Yenokida G, et al. Acute tropical pulmonary eosinophilia. Characterization of the lower respiratory tract inflammation and its response to therapy. **J Clin Invest** 1987; 80(1): 216-225.
- Petricoin EF, Zoon KC, Kohn EC, Barrett JC, Liotta LA. Clinical proteomics: translating benchside promise into bedside reality. **Nat Rev Drug Discov** 2002; 1(9): 683-695.
- Porksakorn C, Nuchprayoon S, Scott AL. Detection of immunodominant molecules derived from *Wolbachia* from the filarial nematode *Brugia malayi*. **Program and abstracts of the 52<sup>nd</sup> annual meeting of American Society of Tropical Medicine and Hygiene (ASTMH)** 2003; 69: 460.

- Porksakorn C, Nuchprayoon S, Park K, Scott AL. *Wolbachia* Surface Protein (WSP) directly stimulates murine macrophages to express inflammatory cytokines. **Program and abstract of the 53<sup>rd</sup> annual meeting of American Society for Tropical Medicine and Hygiene (ASTMH)** 2004; 71(4): 73.
- Punkosdy GA, Addiss DG, Lammie PJ. Characterization of antibody responses to *Wolbachia* surface protein in humans with lymphatic filariasis. **Infect Immun** 2003; 71(9): 5104-5114.
- Punkosdy GA, Dennis VA, Lasater BL, Tzertzinis G, Foster JM, Lammie PJ. Detection of serum IgG antibodies specific for *Wolbachia* surface protein in rhesus monkeys infected with *Brugia malayi*. **J Infect Dis** 2001; 184(3): 385-389.
- Rabilloud T. Two-dimensional gel electrophoresis in proteomics: old, old fashioned, but it still climbs up the mountains. **Proteomics** 2002; 2: 3-10.
- Rabilloud T. Membrane proteins ride shotgun. **Nat Biotechnol** 2003; 21(5): 508-510.
- Renesto P, Azza S, Dolla A, Fourquet P, Vestris G, Gorvel JP, Raoult D. Proteome analysis of *Rickettsia conorii* by two-dimensional gel electrophoresis coupled with mass spectrometry. **FEMS Microbiol Lett** 2005; 245(2): 231-238.
- Richards FO Jr, Eberhard ML, Bryan RT, McNeeley DF, Lammie PJ, McNeeley MB, Bernard Y, Hightower AW, Spencer HC, 1991. Comparison of high dose ivermectin and diethylcarbamazine for activity against Bancroftian filariasis in Haiti. **Am J Trop Med Hyg** 1991; 44: 3-10.
- Rigaud T. Inherited microorganisms and sex determination of arthropod hosts. In: Influential passengers: Inherited microorganisms and arthropod reproduction. O'Niell SL, Hoffmann AA, Werren JH. 1997: 81-101. **Oxford University Press**, Oxford.
- Rock FL, Hardiman G, Timans JC, Kastelein RA, Bazan JF. A family of human receptors structurally related to *Drosophila* Toll. **Proc Natl Acad Sci U S A**. 1998; 95(2): 588-593.

- Rom WN, Vijayan VK, Cornelius MJ, Kumaraswami V, Prabhakar R, Ottesen EA, Crystal RG. Persistent lower respiratory tract inflammation associated with interstitial lung disease in patients with tropical pulmonary eosinophilia following conventional treatment with diethylcarbamazine. **Am Rev Respir Dis** 1990; 142(5): 1088-1092.
- Rousset F, Bouchon D, Pintureau B, Juchault P, Solignac M. *Wolbachia* endosymbionts responsible for various alterations of sexuality in arthropods. **Proc Biol Sci** 1992; 250(1328): 91-98.
- Rowley SM, Raven RJ, McGraw EA. *Wolbachia pipientis* in Australian spiders. **Curr Microbiol** 2004; 49(3): 208-214.
- Sacchi L, Corona S, Casiraghi M, Bandi C. Does fertilization in the filarial nematode *Dirofilaria immitis* occur through endocytosis of spermatozoa? **Parasitology** 2002; 124(Pt 1): 87-95.
- Saint Andre A, Blackwell NM, Hall LR, Hoerauf A, Brattig NW, Volkmann L, Taylor MJ, Ford L, Hise AG, Lass JH, Diaconu E, Pearlman E. The role of endosymbiotic *Wolbachia* bacteria in the pathogenesis of river blindness. **Science** 2002; 295: 1892-1895.
- Sambroock J, Fritsch EF, Maniatis T. Molecular Cloning: A Laboratory Manual, 2nd ed., 1989 **Cold Spring Harbor Laboratory**, Cold Spring Harbor, NY.
- Sartono E, Kruize YC, Kurniawan A, Maizels RM, Yazdanbakhsh M. Depression of antigen-specific interleukin-5 and interferon-gamma responses in human lymphatic filariasis as a function of clinical status and age. **J Infect Dis** 1997; 175(5): 1276-1280.
- Sasaki T, Braig HR, O'Neill SL. Analysis of *Wolbachia* protein synthesis in *Drosophila* in vivo. **Insect Mol Biol.** 1998; 7(2): 101-105.
- Satapathy AK, Sartono E, Sahoo PK, Dentener MA, Michael E, Yazdanbakhsh M, Ravindran B. Human bancroftian filariasis: immunological markers of morbidity and infection. **Microbes Infect** 2006; [Epub ahead of print].

- Schaffer C, Graninger M, Messner P. Prokaryotic glycosylation. **Proteomics** 2001; 1(2): 248-261.
- Schlessinger D. Genome sequencing projects. **Nat Med** 1995; 1(9): 866-888.
- Shenoy RK, Sandhya K, Suma TK, Kumaraswami V. A preliminary study of filariasis related acute adenolymphangitis with special reference to precipitating factors and treatment modalities. **Southeast Asian J Trop Med Public Health** 1995; 26(2): 301-305.
- Shevchenko A, Wilm M, Vorm O, Mann M. Mass spectrometric sequencing of proteins silver-stained polyacrylamide gels. **Anal Chem** 1996; 68(5): 850-858.
- Singu V, Liu H, Cheng C, Ganta RR. *Ehrlichia chaffeensis* expresses macrophage- and tick cell-specific 28-kilodalton outer membrane proteins. **Infect Immun** 2005; 73(1): 79-87.
- Sinkins SP. *Wolbachia* and cytoplasmic incompatibility in mosquitoes. **Insect Biochem Mol Biol** 2004; 34(7): 723-729.
- Sironi M, Bandi C, Sacchi L, Di Sacco B, Damiani G, Genchi C. Molecular evidence for a close relative of the arthropod endosymbiont *Wolbachia* in a filarial worm. **Mol Biochem Parasitol** 1995; 74(2): 223-227.
- Sitek B, Potthoff S, Schulenburg T, Stegbauer J, Vinke T, Rump LC, Meyer HE, Vonend O, Stuhler K. Novel approaches to analyse glomerular proteins from smallest scale murine and human samples using DIGE saturation labelling. **Proteomics** 2006; 6(15): 4337-4345.
- Southamer R, Breeuwer JA, Luck RF, Werren JH. Molecular identification of microorganisms associated with parthenogenesis. **Nature** 1993; 361(6407): 66-68.
- Spry CJ, Kumaraswami V. Tropical eosinophilia. **Semin Hematol** 1982; 19(2): 107-115.
- Stock AM, Robinson VL, Goudreau PN. Two-component signal transduction. **Annu Rev Biochem** 2000; 69: 183-215.

- Stouthamer R, Breeuwer JA, Hurst GD. *Wolbachia pipientis*: microbial manipulator of arthropod reproduction. **Annu Rev Microbiol** 1999; 53: 71-102.
- Stouthamer R. The use of sexual versus asexual wasps in biological control. **Entomophaga** 1993; 38: 3-6.
- Studier FW, Rosenberg AH, Dunn JJ, Dubendorff JW. Use of T7 RNA polymerase to direct expression of cloned genes. **Methods Enzymol** 1990; 185: 60-89.
- Sun LV, Foster JM, Tzertzinis G, Ono M, Bandi C, Slatko BE, O'Neill SL. Determination of *Wolbachia* genome size by pulsed-field gel electrophoresis. **J Bacteriol** 2001; 183(7): 2219-2225.
- Suresh S, Kumaraswami V, Suresh I, Rajesh K, Suguna G, Vijayasekaran V, Ruckmani A, Rajamanickam MG. Ultrasonographic diagnosis of subclinical filariasis. **J Ultrasound Med** 1997; 16(1): 45-49.
- Swanson SK, Washburn MP. The continuing evolution of shotgun proteomics. **Drug Discov Today** 2005; 10(10): 719-725.
- Takeda K, Akira S. TLR signaling pathways. **Semin Immunol** 2004; 16(1): 3-9.
- Takeuchi O, Kawai T, Sanjo H, Copeland NG, Gilbert DJ, Jenkins NA, Takeda K, Akira S. TLR6: A novel member of an expanding toll-like receptor family. **Gene** 1999; 231(1-2): 59-65.
- Tanaka K, Waki H, Ido Y, Akita S, Yoshida Y, Yoshida T, Matsuo T. Protein and polymer analyses up to m/z 100,000 by laser ionization time-of-flight mass spectrometry. **Rapid Commun Mass Spectrom** 1988; 2(8): 151-153.
- Taylor MJ, Hoerauf A. *Wolbachia* bacteria of filarial nematodes. **Parasitol Today** 1999; 15(11): 437-442.
- Taylor MJ, Cross HF, Bilo K. Inflammatory responses induced by the filarial nematode *Brugia malayi* are mediated by lipopolysaccharide-like activity from endosymbiotic *Wolbachia* bacteria. **J Exp Med** 2000a; 191(8): 1429-1436.
- Taylor MJ, Bandi C, Hoerauf AM, Lazdins J. *Wolbachia* bacteria of filarial nematodes: a target for control? **Parasitol Today** 2000b; 16(5): 179-80.



- Taylor MJ, Cross HF, Ford L, Makunde WH, Prasad GB, Bilo K. *Wolbachia* bacteria in filarial immunity and disease. **Parasite Immunol** 2001; 23(7): 401-409.
- Taylor MJ, Makunde WH, McGarry HF, Turner JD, Mand S, Hoerauf A. Macrofilaricidal activity after doxycycline treatment of *Wuchereria bancrofti*: a double-blind, randomised placebo-controlled trial. **Lancet** 2005; 365(9477): 2116-2121.
- Taylor MJ, Bandi C, Hoerauf A. *Wolbachia* bacterial endosymbionts of filarial nematodes. **Adv Parasitol** 2005; 60: 245-284.
- TDR. Lymphatic filariasis. Seventeenth Programme Report 2005. **World Health Organization/Tropical Disease Research**, Geneva.
- Triteeraprapab S, Songtrus J. High prevalence of bancroftian filariasis in Myanmar-migrant workers: a study in Mae Sot district, Tak province, Thailand. **J Med Assoc Thai** 1999; 82(7): 735-739.
- Triteeraprapab S, Karnjanopas K, Porksakorn C, Sai-Ngam A, Yentakam S, Loymak S. Lymphatic filariasis caused by *Brugia malayi* in an endemic area of Narathiwat Province, southern of Thailand. **J Med Assoc Thai** 2001; 84 Suppl 1: S182-188.
- Tucker AM, Pannell LK, Wood DO. Dissecting the *Rickettsia prowazekii* genome: genetic and proteomic approaches. **Ann N Y Acad Sci** 2005; 1063: 35-46.
- Turner PF, Rockett KA, Ottesen EA, Francis H, Awadzi K, Clark IA. Interleukin-6 and tumor necrosis factor in the pathogenesis of adverse reactions after treatment of lymphatic filariasis and onchocerciasis. **J Infect Dis** 1994; 169: 1071-1075.
- Turner JD, Mand S, Debrah AY, Muehlfeld J, Pfarr K, McGarry HF, Adjei O, Taylor MJ, Hoerauf A. A randomized, double-blind clinical trial of a 3-week course of doxycycline plus albendazole and ivermectin for the treatment of *Wuchereria bancrofti* infection. **Clin Infect Dis**. 2006 Apr 15;42(8):1081-9.

- Ulevitch RJ, Tobias PS. Recognition of gram negative bacteria and endotoxin by the innate immune system. **Curr Opin Immunol** 1999; 11: 19–22.
- Vanamail P, Subramanian S, Das PK, Pani SP, Rajagopalan PK. Estimation of fecundic life span of *Wuchereria bancrofti* from longitudinal study of human infection in an endemic area of Pondicherry (south India). **Indian J Med Res** 1990; 91: 293-297.
- Vandekerckhove TT, Watteyne S, Willems S, Swings JG, Mertens J, Gillis M. Phylogenetic analysis of the 16S rDNA of the cytoplasmic bacterium *Wolbachia* from the novel host *Folsomia candida* (Hexapoda, Collembola) and its implications for the *Wolbachia* taxonomy. **FEMS Microbiol Lett** 1999; 180(2): 279–286.
- Vickery AC, Albertine KH, Nayar JK, Kwa BH. Histopathology of *Brugia malayi*-infected nude mice after immune-reconstitution. **Acta Trop** 1991; 49(1): 45-55.
- Vincent AL, Vickery AC, Lotz MJ, Desai U. The lymphatic pathology of *Brugia pahangi* in nude (athymic) and thymic mice C3H/HeN. **J Parasitol** 1984; 70(1): 48-56.
- Washburn MP, Wolters D, Yates JR. Large-scale analysis of the yeast proteome by multidimensional protein identification technology. **Nat Biotechnol** 2001; 13: 242–247.
- Washburn MP, Ulaszek RR, Yates JR. Reproducibility of quantitative proteomic analyses of complex biological mixtures by multidimensional protein identification technology. **Anal Chem** 2003; 75(19): 5054-5061.
- Werren JH. Biology of *Wolbachia*. **Annu Rev Entomol** 1997; 42: 587-609.
- Werren JH, Zhang W, Guo LR. Evolution and phylogeny of *Wolbachia*: reproductive parasites of arthropods. **Proc Biol Sci** 1995; 261(1360): 55-63.

- Werren JH, O'Neill SL. The evolution of heritable symbionts. In: Influential passengers: Inherited microorganisms and arthropod reproduction. Eds. O'Neill SL, Hoffmann AA, Werren JH 1997: 1-41. **Oxford University Press**, Oxford.
- WHO. World Health Report 1995. **World Health Organisation**, Geneva.
- WHO. The Global Programme to Eliminate Lymphatic Filariasis. Annual report on lymphatic filariasis 2003. **World Health Organization**, Geneva.
- WHO. World Health Report 2004. **World Health Organization**, Geneva.
- Wilson DS, Nock S. Recent developments in protein microarray technology. **Angew Chem Int Ed Engl** 2003; 42(5): 494-500.
- Wu CC, MacCoss MJ, Howell KE, Yates JR. A method for the comprehensive proteomic analysis of membrane proteins. **Nat Biotechnol** 2003; 21(5): 532-538.
- Wu M, Sun LV, Vamathevan J, Riegler M, Deboy R, Brownlie JC, McGraw EA, Martin W, Esser C, Ahmadinejad N, Wiegand C, Madupu R, Beanan MJ, Brinkac LM, Daugherty SC, Durkin AS, Kolonay JF, Nelson WC, Mohamoud Y, Lee P, Berry K, Young MB, Utterback T, Weidman J, Nierman WC, Paulsen IT, Nelson KE, Tettelin H, O'Neill SL, Eisen JA. Phylogenomics of the reproductive parasite *Wolbachia pipientis* wMel: a streamlined genome overrun by mobile genetic elements. **PLoS Biol.** 2004; 2(3): E69.
- Yee A, Pardee K, Christendat D, Savchenko A, Edwards AM, Arrowsmith CH. Structural proteomics: toward high-throughput structural biology as a tool in functional genomics. **Acc Chem Res** 2003; 36(3): 183-189.
- Zeindl-Eberhart E, Jungblut PR, Otto A, Rabes HM. Identification of tumor-associated protein variants during rat hepatocarcinogenesis. Aldose reductase. **J Biol Chem** 1994; 269(20): 14589-14594.

## **APPENDICES**

## APPENDIX A

### CHEMICAL AGENTS AND INSTRUMENTS

#### A. Research Instruments

Automatic adjustable micropipette (Eppendorf, Germany)

Balance (Precisa, Switzerland)

Beaker (Pyrex)

Combs (BIO-RAD, USA)

DNA Thermal cycler 2400 (Perkin Elmer, Cetus USA)

Electrophoresis Chamber set (BIO-RAD, USA)

Flask (Pyrex)

Heat block (Bockel)

Parafilm (American National Can, USA)

Pipette boy (Tecnomara, Switzerland)

Pipette rack (Autopack, USA)

Pipette tip (Axygen, USA)

Plastic wrap

Polypropylene conical tube (Elkay, USA)

Power supply model

pH meter (Eutech Cybernataics)

Microcentrifuge (Eppendorf, USA)

Microscope (Olympus)

Reagent bottles (Duran)

Spectrophotometer (BIO-RAD, USA)

Thermometer (Precision, Germany)

Vortex (scientific Industry, USA)

Water bath

Cover slip

Microscope slides

Needle (Nipro)

Syringe (Nipro)

## **B. Reagents**

Absolute ethanol (Merck)

Acetic acid (Merck)

Agar (Scharlau)

Agarose (USB, Spain)

Ampicillin (M&H manufacturing)

Bromphenol blue (Sigma, USA)

Chloroform (Merck)

Disodium ethylenediamine tetraacetic acid: EDTA (Merck)

Ethidium bromide (Sigma)

Glucose (Merck)

Glycerol (Pharmacia Amersham)

Hydrochloric acid (Merck)

IPTG (USB)

Isoamyl alcohol (Merck)

Phenol (Sigma, USA)

Sodium acetate (Merck)

Proteinase K (Pharmacia Amersham)

Sodium hydroxide (Merck)

Sucrose (Sigma, USA)

Tris base (USB)

Triton X-100 (Sigma, USA)

Tween 20 (Sigma, USA)

100 bp DNA ladder (NEB, USA)

Deoxynucleotide triphosphates (dNTPs) (Invitrogen, USA)

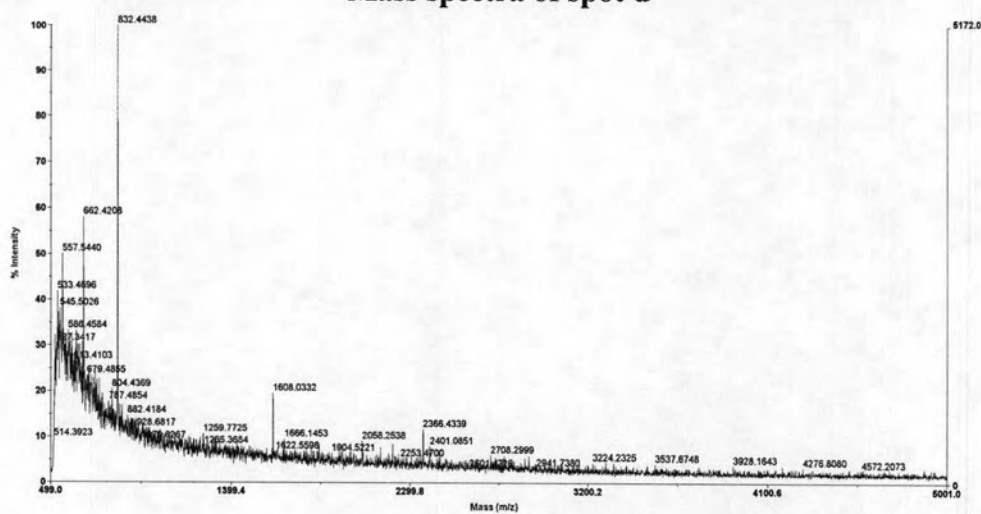
Oligonucleotide primer (IDT, USA)

*Taq* DNA polymerase (Invitrogen, USA)

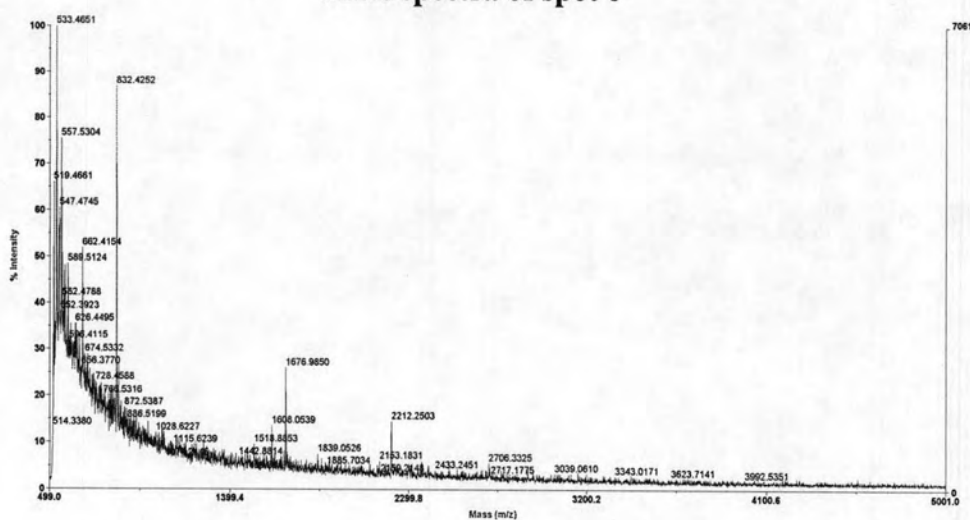
## APPENDIX B

### PEPTIDE MASS FINGERPRINTS OF ANALYZED PROTEIN SPOTS

#### Mass spectra of spot d

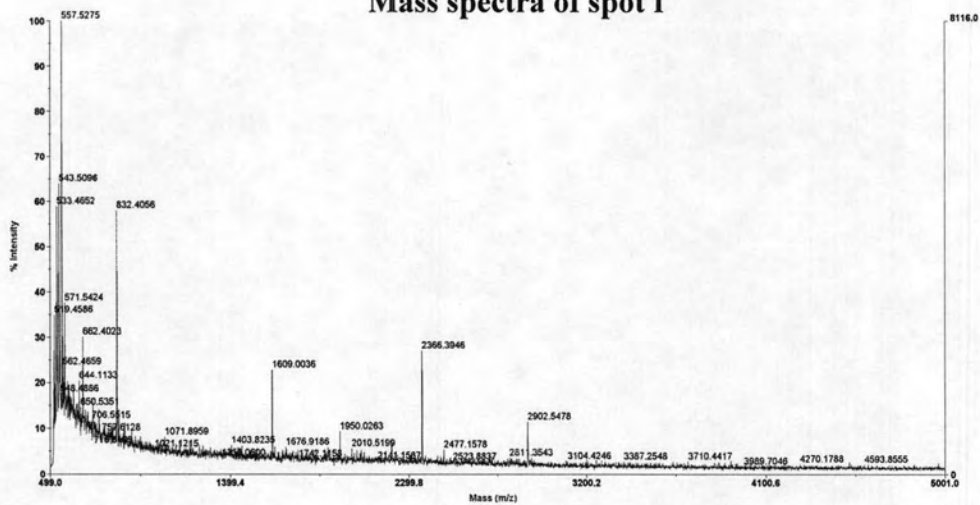


#### Mass spectra of spot e

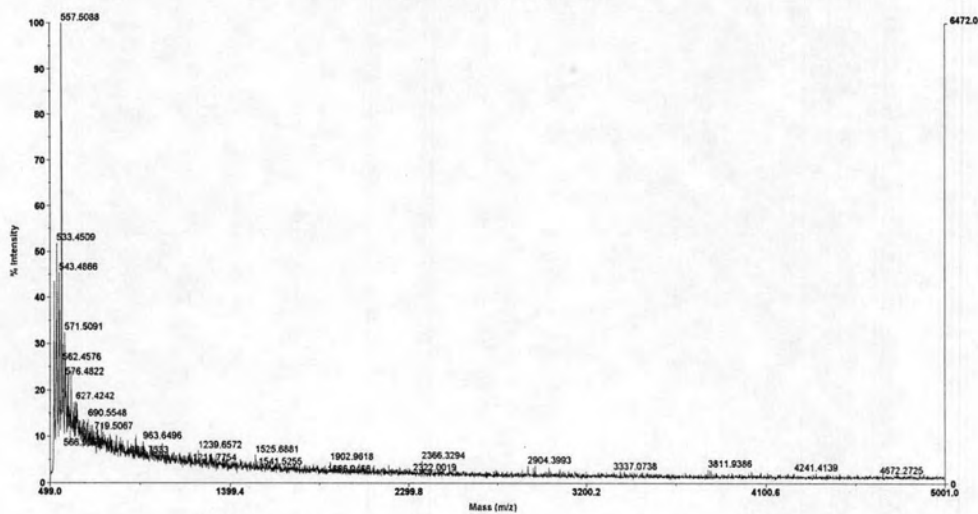




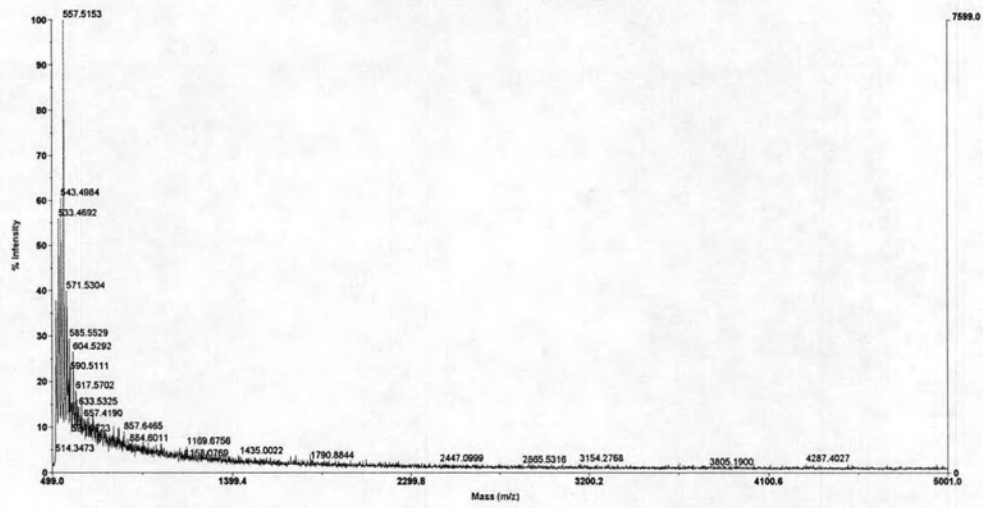
## Mass spectra of spot f



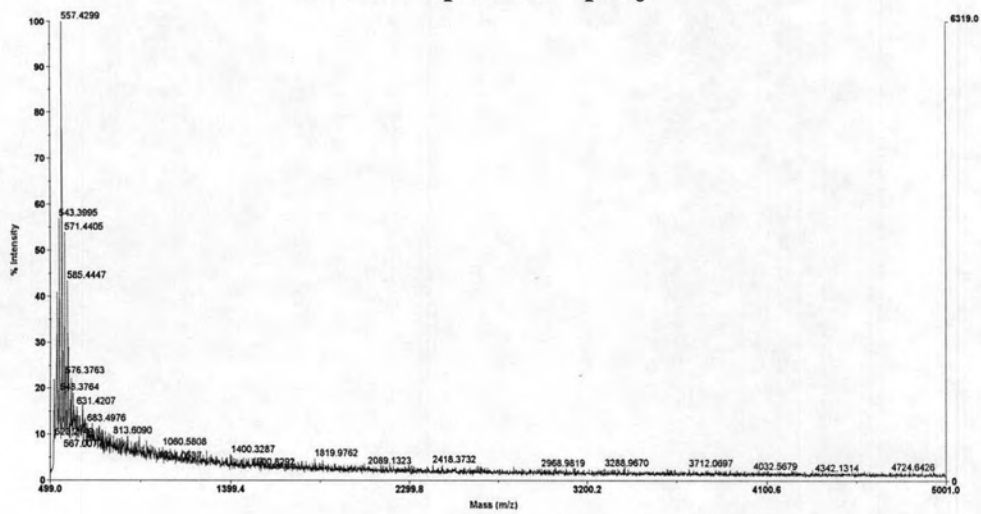
## Mass spectra of spot h



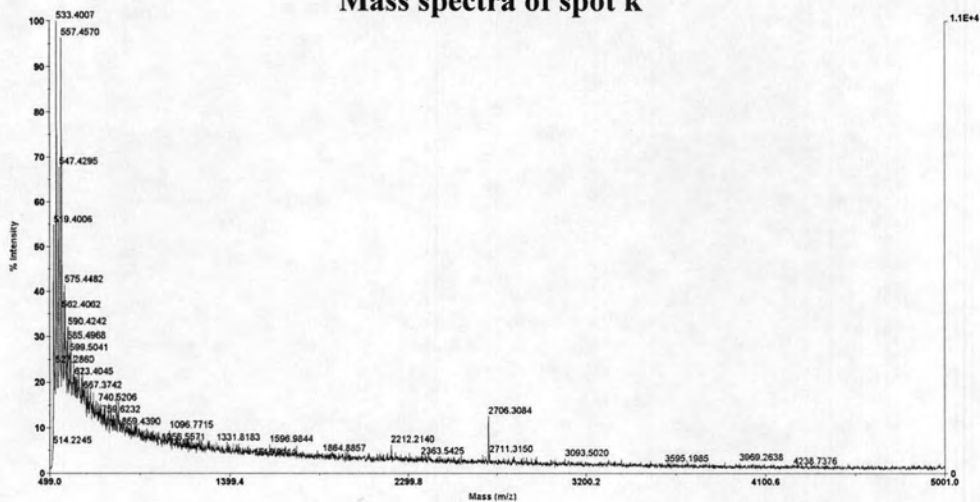
## Mass spectra of spot i



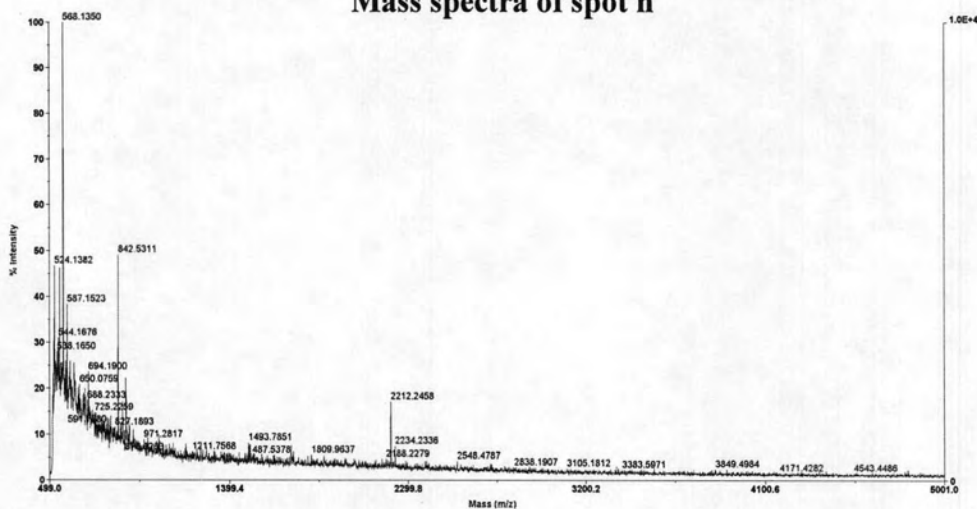
## Mass spectra of spot j



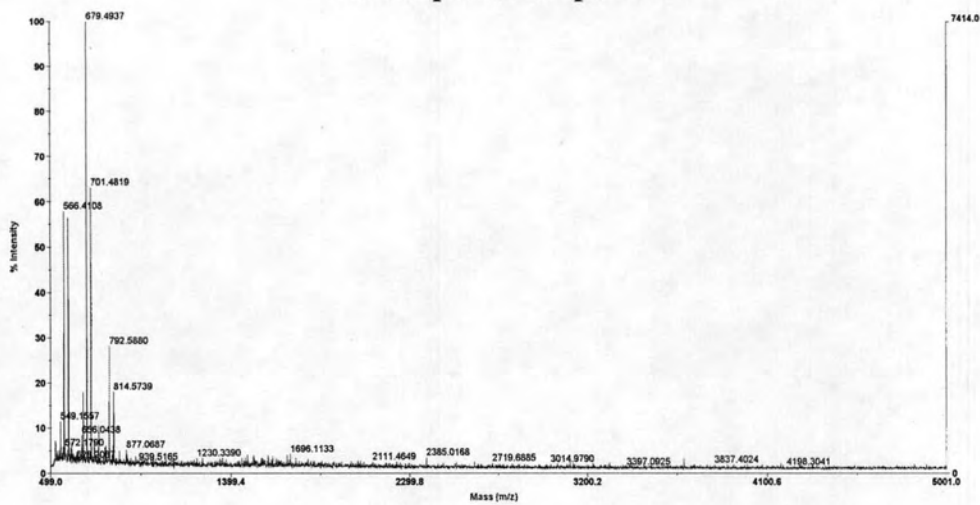
## Mass spectra of spot k



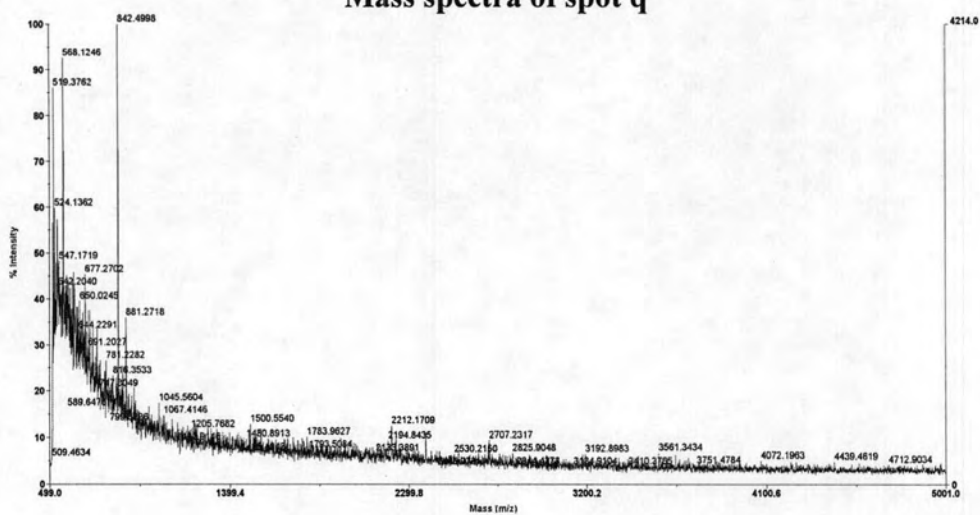
## Mass spectra of spot n



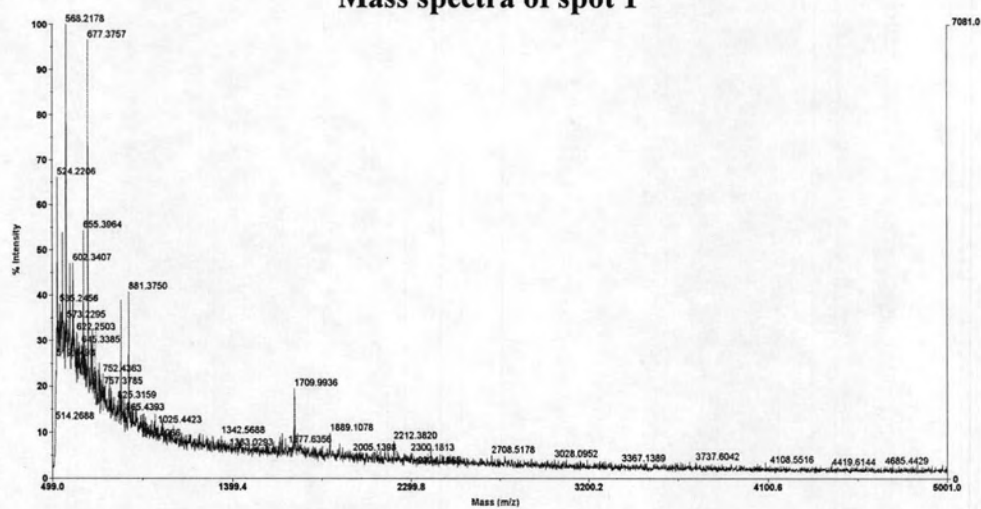
## Mass spectra of spot o



## Mass spectra of spot q



## Mass spectra of spot 1



## **APPENDICES**

## APPENDIX A

### CHEMICAL AGENTS AND INSTRUMENTS

#### A. Research Instruments

Automatic adjustable micropipette (Eppendorf, Germany)

Balance (Precisa, Switzerland)

Beaker (Pyrex)

Combs (BIO-RAD, USA)

DNA Thermal cycler 2400 (Perkin Elmer, Cetus USA)

Electrophoresis Chamber set (BIO-RAD, USA)

Flask (Pyrex)

Heat block (Bockel)

Parafilm (American National Can, USA)

Pipette boy (Tecnomara, Switzerland)

Pipette rack (Autopack, USA)

Pipette tip (Axygen, USA)

Plastic wrap

Polypropylene conical tube (Elkay, USA)

Power supply model

pH meter (Eutech Cybernataics)

Microcentrifuge (Eppendorf, USA)

Microscope (Olympus)

Reagent bottles (Duran)

Spectrophotometer (BIO-RAD, USA)

Thermometer (Precision, Germany)

Vortex (scientific Industry, USA)

Water bath

Cover slip

Microscope slides

Needle (Nipro)

Syringe (Nipro)

## **B. Reagents**

Absolute ethanol (Merck)

Acetic acid (Merck)

Agar (Scharlau)

Agarose (USB, Spain)

Ampicillin (M&H manufacturing)

Bromphenol blue (Sigma, USA)

Chloroform (Merck)

Disodium ethylenediamine tetraacetic acid: EDTA (Merck)

Ethidium bromide (Sigma)

Glucose (Merck)

Glycerol (Pharmacia Amersham)

Hydrochloric acid (Merck)

IPTG (USB)

Isoamyl alcohol (Merck)

Phenol (Sigma, USA)

Sodium acetate (Merck)

Proteinase K (Pharmacia Amersham)

Sodium hydroxide (Merck)

Sucrose (Sigma, USA)

Tris base (USB)

Triton X-100 (Sigma, USA)

Tween 20 (Sigma, USA)

100 bp DNA ladder (NEB, USA)



Deoxynucleotide triphosphates (dNTPs) (Invitrogen, USA)

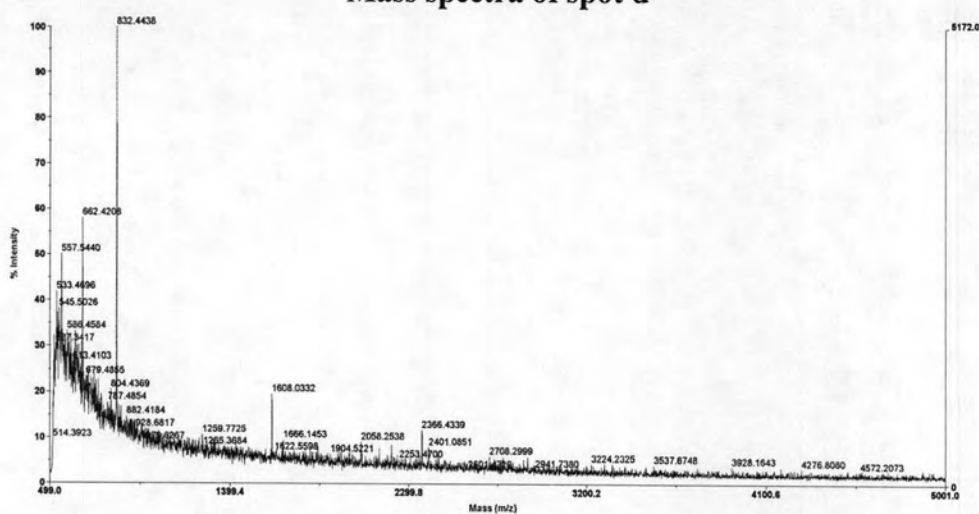
Oligonucleotide primer (IDT, USA)

*Taq* DNA polymerase (Invitrogen, USA)

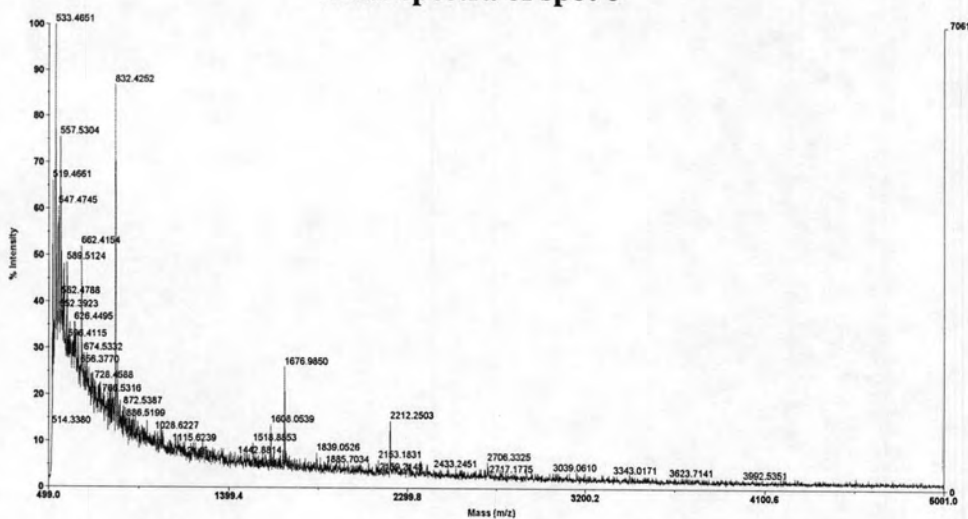
## APPENDIX B

### PEPTIDE MASS FINGERPRINTS OF ANALYZED PROTEIN SPOTS

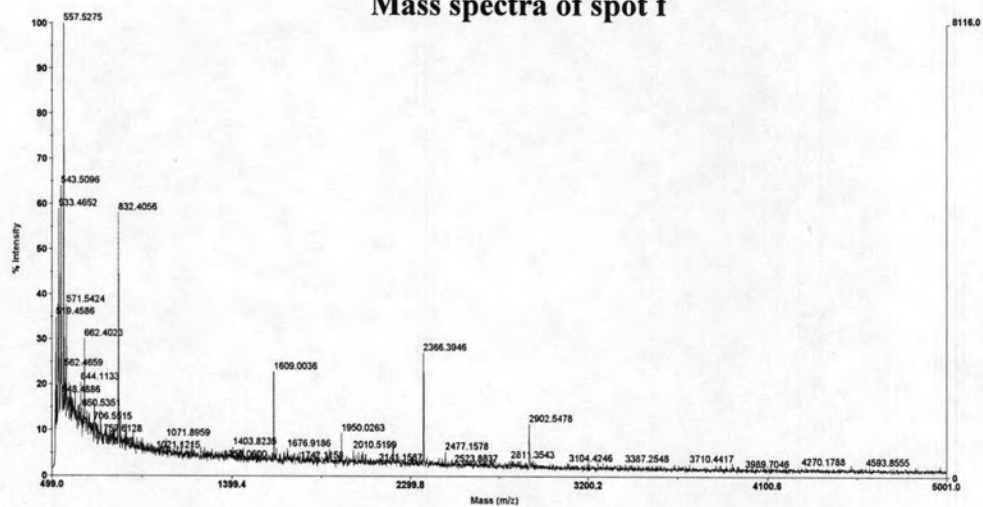
#### Mass spectra of spot d



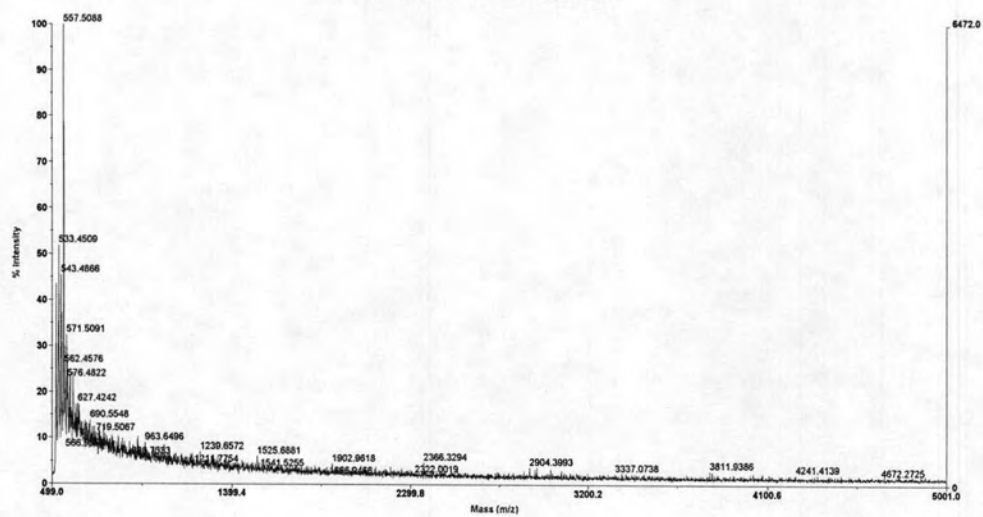
#### Mass spectra of spot e



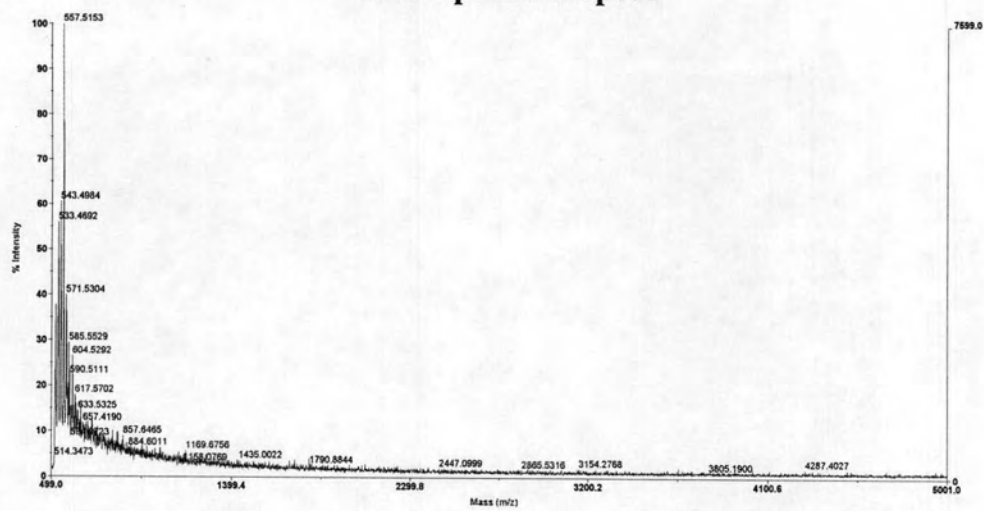
## Mass spectra of spot f



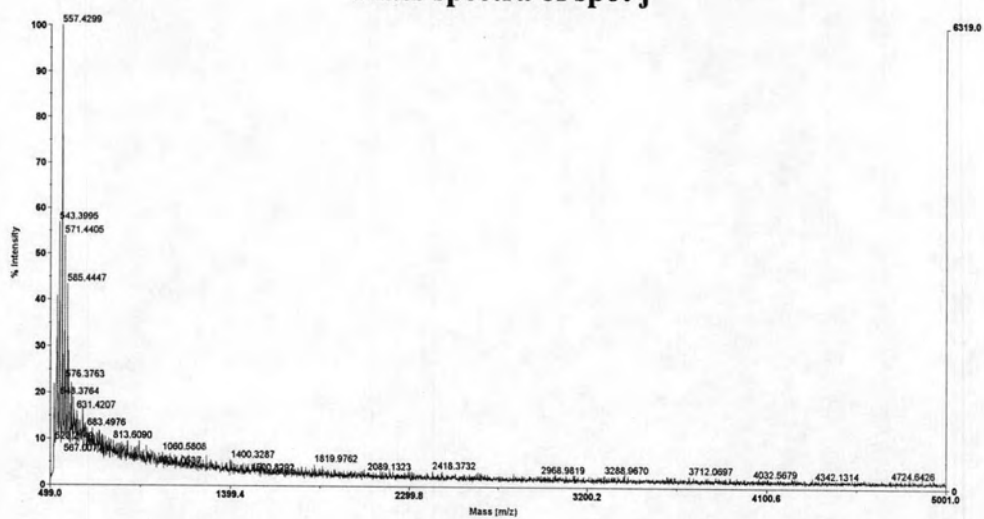
## Mass spectra of spot h



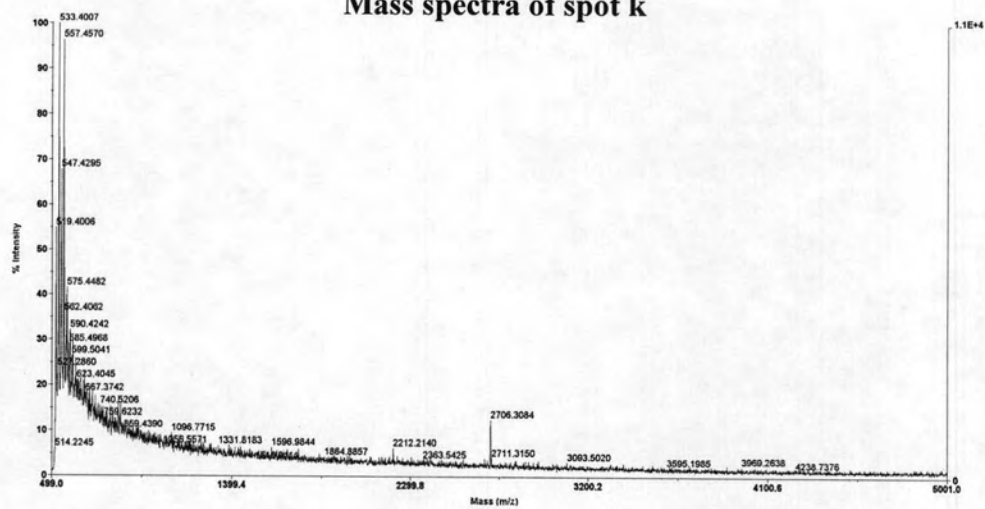
## Mass spectra of spot i



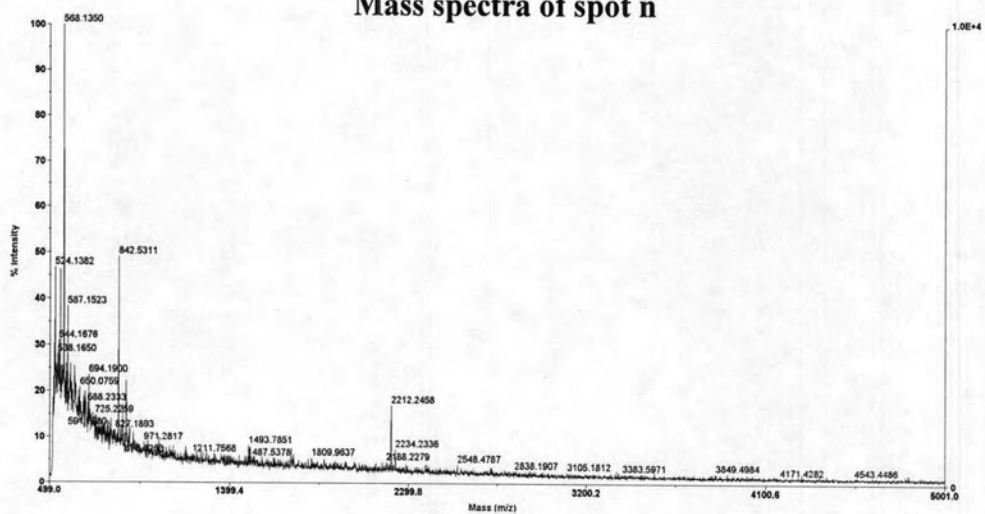
## Mass spectra of spot j



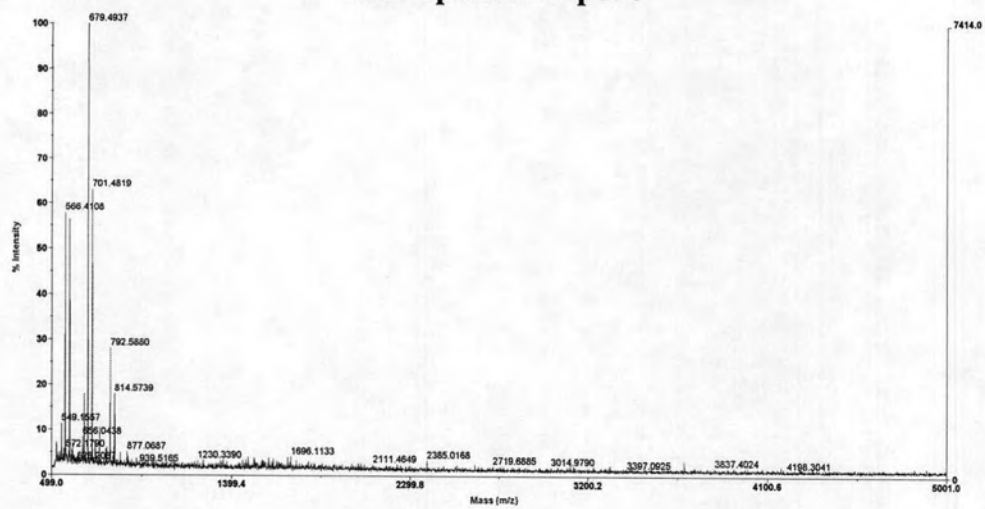
## Mass spectra of spot k



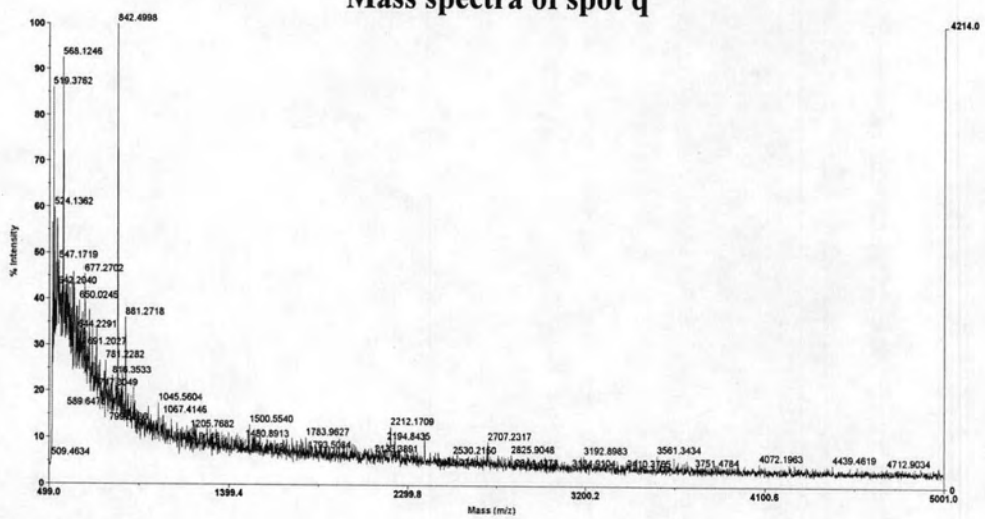
## Mass spectra of spot n



## Mass spectra of spot o



## Mass spectra of spot q



## BIOGRAPHY

Ms. Chantima Porksakorn was born on September 24, 1976 in Ratchaburi. She received her Bachelor Degree of Science (Medical Technology) with first-class honors in 1998 from Faculty of Allied Health Science, Chulalongkorn University. She has enrolled in the Royal Golden Jubilee Scholarship (TRF) in the graduate program for the Degree of Doctor of Philosophy Program in Medical Microbiology, Interdisciplinary Program, Chulalongkorn University since 1999. She has received the Travel Grant Award from the American Society of Tropical Medicine and Hygiene 53rd Annual Meeting (2004) during her Ph.D. study.

### Publications

- Nuchprayoon S, **Porksakorn C**, Junpee A, Sanprasert V. 2003 Comparative Assessment of the Og4C3 ELISA to ICT Filariasis Test: A study in Myanmar migrants of Thailand. *Asian Pacific Journal of Allergy and Immunology*. 21: 253-257.
- Nuchprayoon S, Sanprasert V, **Porksakorn C**, Nuchprayoon I. 2003 Prevalence of bancroftian filariasis on the Thai-Myanmar border. *Asian Pacific Journal of Allergy and Immunology*. 21: 179-188.
- Nuchprayoon S, Siriyasatien P, Kraivichian K, **Porksakorn C**, Nuchprayoon I. 2002 Prevalence of parasitic infections among Thai patients at the King Chulalongkorn Memorial Hospital, Bangkok, Thailand. *Journal of Medical Associate Thai*. 85: S415-423.
- Tritteraprapab S, Nuchprayoon I, **Porksakorn C**, Poovorawan Y, Scott AL. 2001 High prevalence of *Wuchereria bancrofti* infection among Myanmar migrants in Thailand. *Annual of Tropical Medicine and Parasitology*. 95: 535-538.