

## REFERENCES

- Asia Development Bank. (2005). *Asian Development Outlook 2005*. Hong Kong: Asia Development Bank.
- Amnesty International. (2005). Thailand: *The Plight of Burmese Migrant Workers*. Bangkok: Amnesty International, Retrieved 22 May 2007 from [http://web.amnesty.org/library/pdf/ASA390012005ENGLISH/\\$File/ASA3900105.pdf](http://web.amnesty.org/library/pdf/ASA390012005ENGLISH/$File/ASA3900105.pdf)
- Asian Migration Center & Mekong Migration Network. (2005). *Resource Book: Migration in the Greater Mekong Subregion*. Hong Kong: Asian Migrant Center.
- Arnold, D. and Hewison, K. (2005). "Exploitation in Global Supply Chains: Burmese Migrant Workers in Mae Sot, Thailand." *Journal of Contemporary Asia* 31(3).
- Black, Richard. (2003). *Soaring Remittances Raise New Issues*. Retrieved 12 July, 2007 from <http://www.migrationinformation.org/Feature/display.cfm?ID=127>
- Burma Lawyers' Council. (2007). *Myanmar Law (1999)*. Retrieved 11 September 2007 from [http://www.blc-burma.org/HTML/Myanmar%20Law/lr\\_e\\_ml99\\_03.html](http://www.blc-burma.org/HTML/Myanmar%20Law/lr_e_ml99_03.html)
- Caouette, T., Sciortino, R., Guest, P. and Feinstein, A. (2006). *Labor Migration in the Greater Mekong Sub-region*. Bangkok: The Rockefeller Foundation.
- Chantavanich, S, Vangsiriphisal, P and Laodumrongchai, S. (2006). *Thailand Policies towards Migrant Workers from Myanmar*. Bangkok: Asian Research Center for Migration.
- Datta, K., McIlwaine, C., Wills, J., Evans, Yara., Herbert, J. and May, J. (2006). *Challenging remittances as the new development mantra: perspectives from low-paid migrant workers in London*. London: Department of Geography, Queen Mary, University of London.
- Fink, C. (2001). *Living Silence: Burma under Military Rule*. Bangkok: White Lotus.
- Garip, F. (2006). *Social and Economic Determinants of Migration and Remittances: An Analysis of 22 Thai Villages*. Retrieved 22 April 2007, from <http://paa2006.princeton.edu/abstractViewer.aspx?submissionId=60608>.

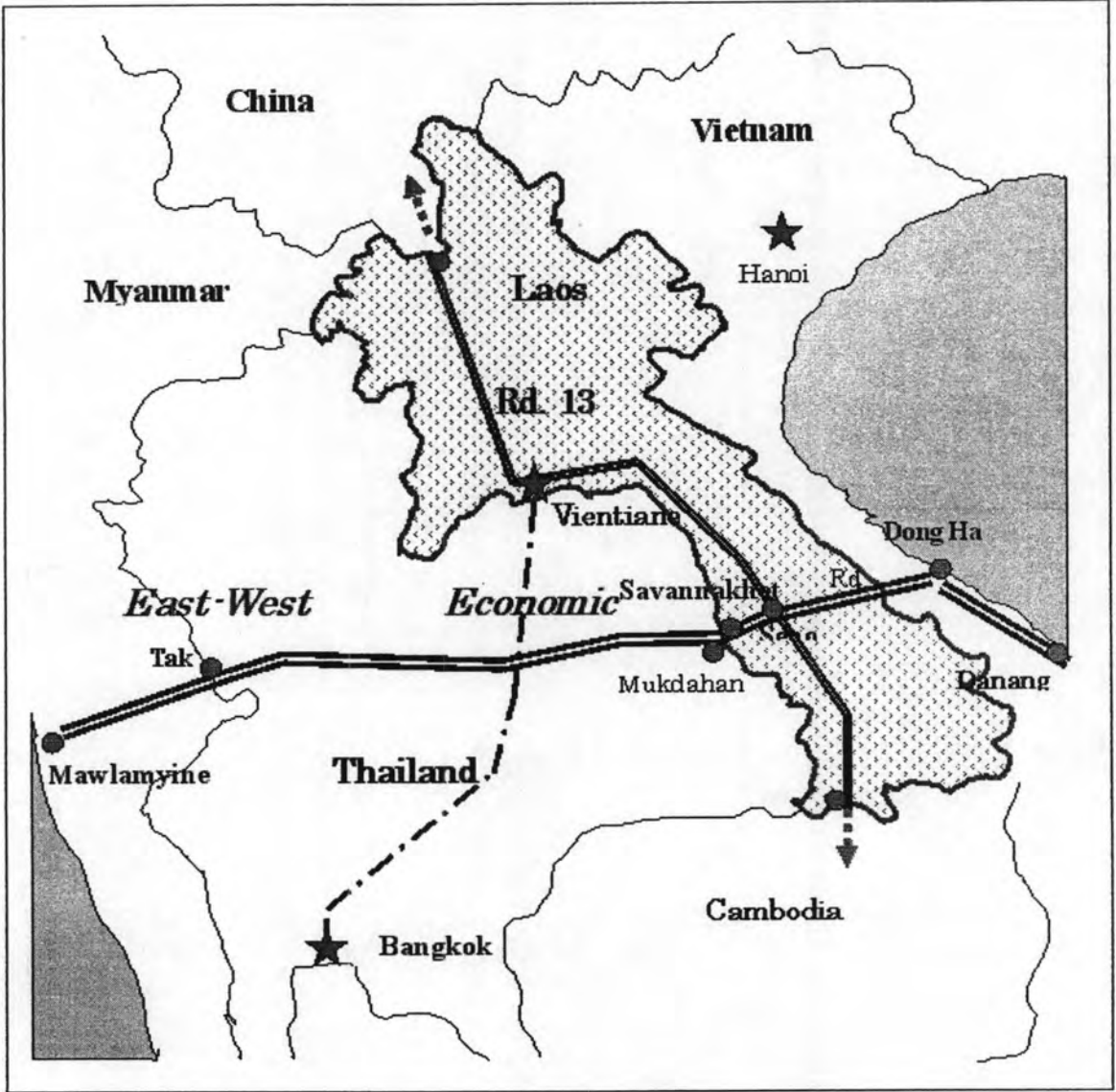
- Gaur, Seema. (2005). *Remittance debate revisited: new evidence from Indian migrant workers in Lebanon*, Paris: International Union for the Scientific Study of Population.
- Haas, H. d. (2005). "International Migration, Remittances and Development: Myths and facts." *Third World Quarterly* 26(8),1269-1284.
- Haas, H.d. (2007). *The impact of international migration on social and economic development in Moroccan sending regions: a review of the empirical literature*, Oxford: International Migration Institute.
- Huguet, J and Punpuing, S. (2005). *International Migration in Thailand*, Bangkok: International Organization for Migration.
- Koser, K. (2007). *International Migration: A Very Short Introduction*. New York: Oxford University Press.
- LSCW. (2005). *Needs Assessments and Analysis of the Situation of Cambodian Migrant Workers in Klong Yai District, Trad, Thailand* Phnom Pen: UN Inter-Agency Project on Human Trafficking in the Greater Mekong Sub-region.
- Lwin, Ye. (2005a). "Singapore port to hire more Myanmar workers in 2005", *The Myanmar Times* 14(277).
- Lwin, Ye. (2005b). "Myanmar asks Malaysian employers for a wage rise", *The Myanmar Time* 14 (253).
- MAP. (2007). *Migration Policy Timeline*. Retrieved 22 March, 2007 from <http://www.mapfoundationcm.org/Eng/policy.html>
- Massey, D. S. (2003). *Patterns and Processes of International Migration in the 21st Century*. Conference on African Migration in Comparative Perspective, Johannesburg.
- Maphosa, France. (2005). *The Impact of Remittances from Zimbabweans Working in South Africa on Rural Livelihoods in the Southern districts of Zimbabwe*, Harare: Department of Sociology, University of Zimbabwe.
- Massey, D.S. & Basem, L.C. (1992). "Determinants of savings, remittances, and spending patterns among U.S migrants in four Mexican communities." *Sociological Inquiry* 62(2): 431-466.
- Mitchell, S. S. (2006). *Migration and the remittance euphoria: development or dependency?* London: New Economics Foundation.

- Muntarbhorn, V. (2005). *The Mekong Challenge Employment and Protection of Migrant Workers in Thailand: national Laws/Practices versus International Labour Standards?* Retrieved 13 March, 2007, from [www.ilo.org/public/english/region/asro/bangkok/child/trafficking/downloads/migrantworkers.pdf](http://www.ilo.org/public/english/region/asro/bangkok/child/trafficking/downloads/migrantworkers.pdf)
- Nikas, Christos and King, Russell. (2005) "Economic growth through remittances: lessons from the Greek experience of the 1960s applicable to the Albanian case", *Journal of Southern Europe and the Balkans*, 7(2): 235 – 257. Retrieved 13 March, 2007, from URL: <http://dx.doi.org/10.1080/14613190500133334>
- Osaki, K. (2003). "Migrant Remittances in Thailand : Economic Necessity or Social Norm? " *Journal of Population Research* 20(2).
- Rahman, M.M & Yeoh, B. S.A.(2006). *The Social Organization of Remittances: Channelling Remittances from East and Southeast Asia to Bangladesh*. Singapore: Asian Metacentre.
- Than, Mya & Thein, Myat. (2007). "Transitional economy of Myanmar: present status, developmental divide, and future prospects", *ASEAN Economic Bulletin*, Singapore: Institute of Southeast Asian Studies (ISEAS).
- The House of Commons. (2004a). *International Development - Sixth Report*, London: International Development Committee, The House of Commons.
- The House of Commons. (2004). *Migration and Development: How to make Migration Work for Poverty Reduction*. London: Stationery Office Limited, The House of Commons.
- The World Bank. (2006a). *Global Economic Prospects: Economic Implications of Remittances and Migration*. Washington DC: The World Bank.
- The World Bank. (2006b). *Labor Migration in the Greater Mekong Sub-region*. Washington DC: The World Bank.
- Thai Law Forum. (2007). *Foreign Exchange Controls in Myanmar*. Retrieved 12 September 2007 from <http://www.thailawforum.com/articles/forexkobatake.html>
- United Nations Development Program. (2006). *Human Development Report 2006*. New York: United Nations Development Program.

- U.S Commercial Service. (2006). *Doing Business In Burma: A Country Commercial Guide for U.S. Companies*, Washington D.C: U.S Department of States.
- Wai, Hlaing Thit Zin. (2007) "Instable Job Opportunities in Malaysia", *Living Color Magazine*, 141.
- Win, May Thandar. (2005). Govt Reiterates FE regulations, *The Myanmar Times*, 14 (267)



Appendix A *Mawlamyine at the Western End of the East-West Economic Corridor of Greater Mekong Subregion*





**Appendix B Photos Taken during the Research June 20 to July 25, 2007**



Photo 1 Migrants' Dormitory in Bangkok



Photo 2 Inside Migrant Dormitory in Bangkok



Photo 3 Inside Migrants' Dormitory in Mae Sot



Photo 4 Inside Nyar Na Kone Village

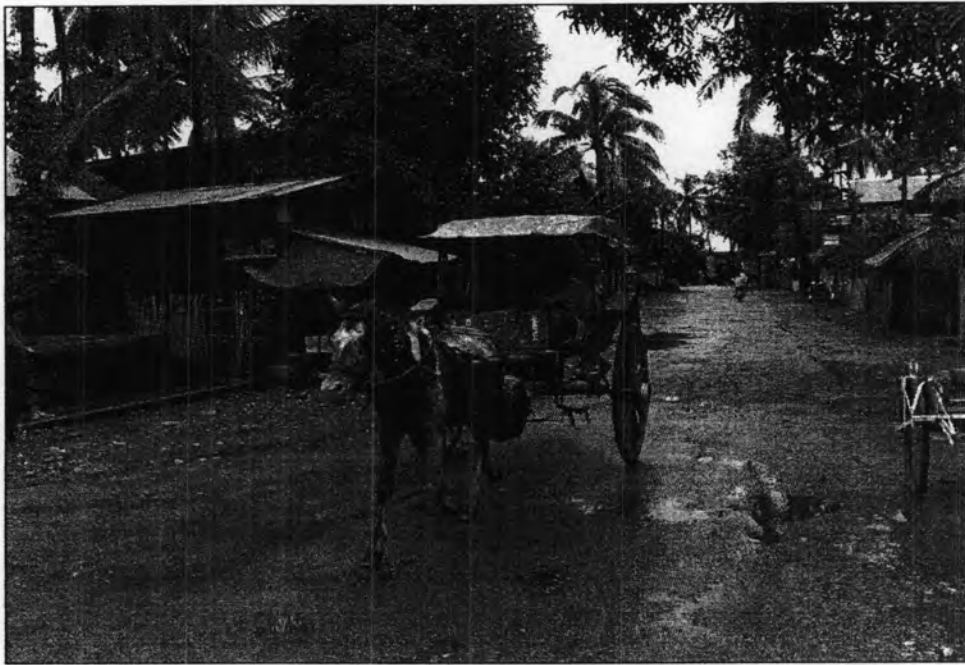


Photo 5 Main Transportation to Down Town Mawlamyine



Photo 3 Fishing Boat Left Behind





Photo 4 Monastery inside the Village



Photo 5 New House of Case 5

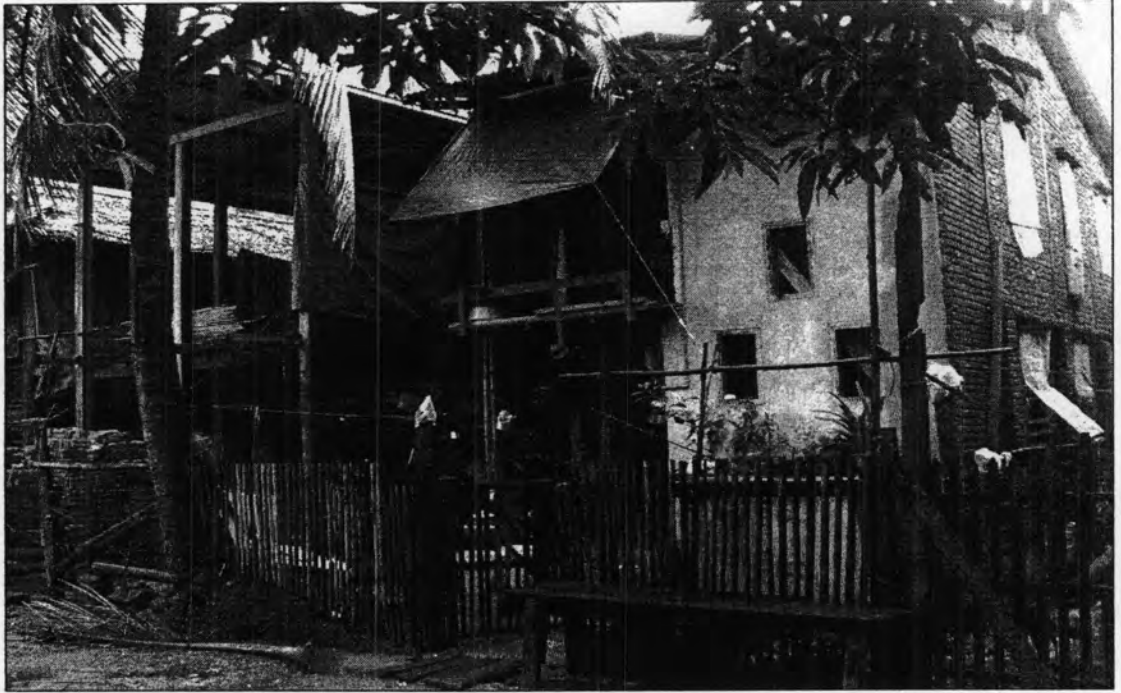


Photo 6 Remittances Flow to Construction of New Houses in Home Village



Photo 7 House Built with Remittances by Case No-7

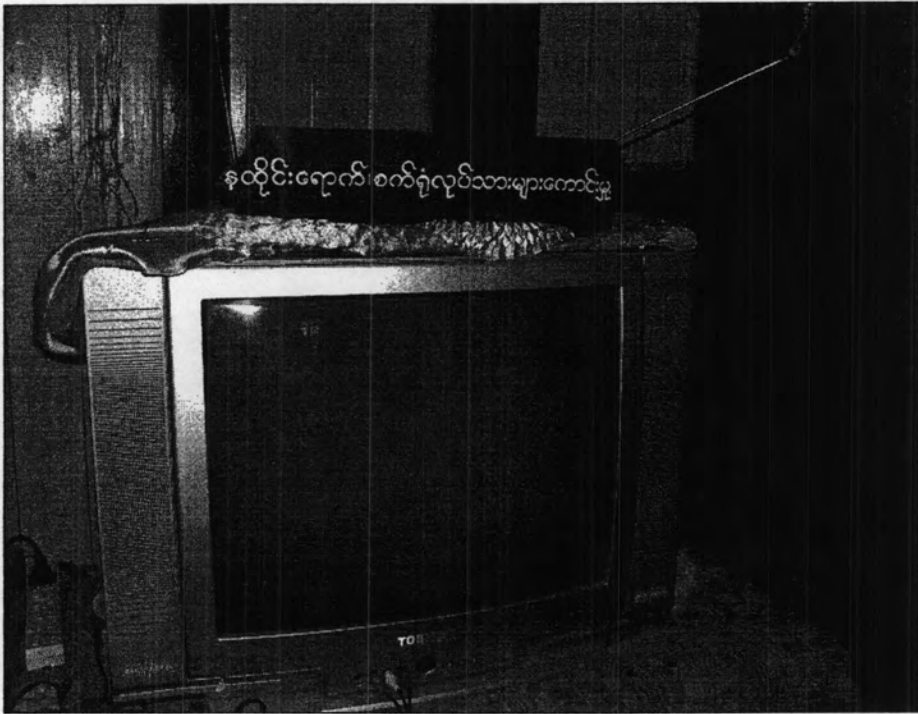


Photo 7 Television Donated by Factory Workers from Mae Sot to Village Monastery

## BIOGRAPHY

Nwet Kay Khine was born in Mon State, Myanmar. She graduated High School from No (7) Basic Education High School of Mawlamyine (SPG) in 1995 and joined the Yangon University in 1996. Her bachelor degree graduated in 2004 was specialized in International Relations. She is still in the middle studying her M.A in International Relations in Dagon University. Before her joined MAIDS program in 2006, she has been working as an executive editor for Living Color Media of Myanmar Partners' Think Tank Group based in Yangon.

