

REFERENCES

1. Andreani M, Manna M and Luoarelli U. Persistence of mixed chimerism in patients transplanted for the treatment of thalassemia. Blood. 1996; 87: 3494-3499.
2. Reiffers J, Goldman JM and Armitage JO. Blood stem cell transplantation. 1998: 238-239.
3. รศ.นพ. วิชัย เหล่าสมบัติ. ธาลัสซีเมีย (Thalassemia). พิมพ์ครั้งที่ 1. กรุงเทพมหานคร: โอเอส พรินติ้งเฮาส์ จำกัด, 2541 หน้า 4.
4. ธาลัสซีเมีย : สถานการณ์ปัจจุบันและ กลวิธีในการป้องกันและควบคุมโรคเลือดในประเทศไทย (พ.ศ.2532-2533). พิมพ์ครั้งที่ 1. กรุงเทพมหานคร: นำอักษรการพิมพ์, 2533. หน้า 20.
5. รศ.นพ. วิชัย เหล่าสมบัติ. ธาลัสซีเมีย (Thalassemia). พิมพ์ครั้งที่ 1 กรุงเทพมหานคร: โอเอส พรินติ้งเฮาส์ จำกัด, 2541 หน้า 94.
6. Necheles TF, et al. Intensive transfusion therapy in the thalassemia major : an eight year follow up. Ann NY Acad Sci. 1974; 179-185.
7. Engehard D and Cividalli G. Splenectomy in homozygous beta- thalassemia: a retrospective study of patients. Br J Haematol. 1975; 31: 193-203.
8. Brittenham GM, et al. Efficacy of deferoxamine in preventing complications of iron overload in patients with thalassemia majors. N Engl J Med. 1994; 331: 574-578.
9. Olivieri NF, et al. Survival in medically treated patients with homozygous beta - thalassemia. N Engl J Med. 1994; 331: 574-582.
10. Gratwohl A, et al. Indications for haematopoietic precursors cell transplant in Europe. Br J Haematol. 1996; 92: 35-45.
11. Touraine JL, Raudrant D and Royo C. In utero transplantation of hematopoietic stem cells in humans. Transplant Proc. 1991; 23: 1706-1708.
12. Lucarelli G, et al. Bone marrow transplantation in thalassemia seminar. Hematol. 1995; 32: 297-303.
13. Flake AW and Zanjani ED. In utero hematopoietic stem cell transplantation: A status report. JAMA. 1997; 278-320.
14. Georges E, et al. Animal models : stem cell transplantation 1st edition London. UK, 1998; 1-14.

15. Wagner JE, et al. Transplantation of umbilical cord blood after myeloblastic therapy analysis of engraftment. Blood. 1992;1874-1881.
16. Appreley JF. Meeting Report : Umbilical cord blood progenitor cell transplantation. Bone Marrow Transplantation. 1994;14:187-196.
17. Lu L, Xioa M and Shen RN. Enrichment characterization and responsiveness of single primitive CD 34 +++ human umbilical cord blood hematopoietic progenitor with high proliferate and repeating potential. Blood. 1993;81:41-48.
18. Cromblehole TM ,et al. Transplantation of fetal cells. Am J Obstet Gynecol. 1991;164:218-230.
19. Hussain M, et al. Prostate cancer : flow cytometric methods for detection of bone marrow micrometastases. Cytometry. 1996;26:40-46.
20. Hurban RH, et al. Fluorescence *in situ* hybridization for the Y- chromosome can be used to detect cells of recipient origin in allografted hearts following cardiac transplantation. Am J Pathol. 1993;142:975-980.
21. Joseph JM, Mosimann F and Aubert V. PCR confirmation of microchimerism and diagnosis of GVHD after liver transplantation. Transplan Int. 1999;12:468-467.
22. Ogawa M. Differentiation and proliferation of hematopoietic stemcells. Blood. 1993; 81:2844-2853.
23. Stem Cells : A Primer. 2002 National Institutes of health (NIH), Maryland. <http://www.nih.gov/news/stemcell/primer.htm>.
24. Schlossman SE, Boumsell L and Gliks W. Leucocyte Typing V White Cell Differentiation Antigens. Vol.2. Proceedings of 5th International Workshop and conference, Boston : Oxford University Press. 1995:22.
25. Krause DS, et al. CD 34 : Structure, biology and clinical utility. Blood. 1996;87:1-13.
26. Simmons PJ, Przepiorka D, Thomas ED and Torokstorb B. Host origin of marrow stromal cells following allogeneic bone marrow transplantation. Nature. 1987;328:429-432.
27. Crombleholme TM, Harrison Mr and Zanjani ED. In utero transplantation of hematopoietic stem cells in sheep: The role of T cell in engraftment and GVHD. J Pediatr Surg. 1990; 25:885-892.

28. Stanford University Medical Center, California. <http://www.lph.org/transplant/images/>.
29. Goodman JW and Hodgson GS. Evidence for stem cells in peripheral blood of mice. Blood. 1962;19:702-714.
30. Kessinger A, Armitage JO, Landmark JD and Smith DM .Autologous peripheral hematopoietic stem cell transplantation restores hematopoietic function following marrow ablative therapy. Blood. 1998;71:723-727.
31. Beyer J, Schwella N and Zingsem J. Hematopoietic rescue after high – dose chemotherapy using autologous peripheral blood progenitor cells or bone marrow : a randomized comparison. J Clin Oncol. 1995;13:1328-1335.
32. Touraine JL, Roncarolo MG and Bacchetta R. Fetal liver transplantation biology and clinical results. Bone Marrow Transplan. Suppl 1. 1993;11:119-22.
33. Rice HE, Hedrick MH and Flake AW. Bacterial and fungal contamination of human Fetal liver collected transvaginally for hematopoietic stem cell transplantation. Fetal Diagn Ther. 1993;8:74-78.
34. The Children's Hospital of Philadelphia. A pediatric healthcare network, Philadelphia. <http://www.fetalsurgery.chop.edu>.
35. Broxmeyer HE, Douglas GW and Hangoc G. Human umbilical cord blood as a potential source of transplantable hematopoietic stem/ progenitor cells. Proc Natl Acad Sci USA. 1989;86:3828-3832.
36. Gluckman E, Broxmeyer HE and Auerbach AD. Hematopoietic reconstitution in a potential with Fanconi's anemia by means of umbilical cord blood from an HLA – identical sibling. N Engl J Med. 1989;321:1174-1178.
37. Best Health Surgeries and Procedures. Wake Forest University Baptist Medical Center, California. <http://www.stemcytenic.com/parents/en-1.htm>.
38. Kline RM and Salvatore JB. Umbilical cord blood transplantation: Providing a donor for everyone needing a bone marrow transplant ?. Southern medical journal. 1998;91:821-828.
39. Barrett AJ and Gordon MY. Bone marrow disorders: The biological basis of treatment 2nd edition. 1993:202-206.

40. Tavassoli M. Embryonic and fetal hemopoiesis an overview. Blood Cell.1991; 17:269-281.
41. Russell NH, et al. Peripheral blood stem cells as an alternative to marrow for allogeneic transplantation.Lancet.1993; 341:1482-1487.
42. Gahrton G. Bone marrow transplantation with unrelated volunteer donors. Eur J Cancer.1991;27:1537-1539.
43. Picus J, et al. A naturally occurring bone marrow- chimeric primate II. Environment dictates restriction on cytolytic T – lymphocyte -target cell interactions J Exp Med.1985;162:2035-2038.
44. Bone Marrow Transplant Center of the Rush Cancer Institue, Chicago.
<http://www.bone-marrow-transplant.org/autologous-recovering.html> .
45. Diukman R and Golbus MS. In utero stem cell therapy.J Reprod Med.1992; 37: 515-520.
46. Billingham R, et al. Actively acquired tolerance of foreign cells.Nature.1953;172: 603-607.
47. Bodine DM, et al. In vivo administration of stem cell factor to mice increase the Absolute number of pluripotent hematopoietic stem cells.Blood.1993;82: 445-455.
48. Flake AW and Zanjani ED. In utero tranplantaion for thalassemia. Ann NY Acad Sci. 300-309.
49. Zanjani ED, Flake AW and Almeida – Porada G. Homing of human cells in the fetal sheep Modulation by antibodies activating or inhibiting very late activation antigen-4-dependent function. Blood.1999;94:2515-2522.
50. Srour EF, et al. Persistence of human multilineage, self renewing lymphohematopoietic stem cells in chimeric sheep.Blood.1993;82:3333-3336.
51. Atkinson MJ, et al. New alleles of IGKV genes A2 and A18 suggest significant polymorphism Bone Marrow Transplantation, 1999. 24(9):1009-13.
52. Neben S , Marcus K and Mauch P. Mobilization of hematopoietic stem and progenitor cell subpopulations from the marrow to the blood of mice following cyclophosphamide and/or granulocyte colony- stimulating factor.Blood. 1993;81:1960-1967.

53. Storb R, et al. Marrow grafts between canine siblings matched by serotyping and mixed leukocyte culture. J Clin Invest.1971;50:1272-1275.
54. Andrews RG, Briddell RA and Knitter GH. Rapid engraftment by peripheral blood progenitor cells mobilized by recombinant human granulocyte colony – stimulating factor in non human primates.Blood.1995;85:15-20.
55. Zanjani ED, et al. Persistence of human multilineage stem cells in chimeric sheep. Blood .1993;82:3333-3342.
56. Zanjani ED, et al. The fetus as an optimal donor and recipient of hematopoietic stem cells. Bone MarrowTransplant.1992;10:107-113.
57. Flow Cytometry.Becton Dickinson immunocytometry system (BDIS),California. <http://www.bobiosciences.com/immucytometry>.
58. Garth Nabis. FACSCalibur User's Guide. Becton Dickinson immunocytometry system (BDIS),California.1994:57.
59. Darryl Ijia. National Human Genome Research Institute, Maryland. <http://www.accessexcellence.org/>.
60. Fluorescence in situ hybridization ,Illinois. <http://www.Vysis.com>.
61. Cowan MN and Golbus MS. In utero hematopoietic stem cells transplants for inherited disease. Am J Pediatr Hematol/Oncology.1994;16:35-42
62. Parkman R.The application of bone marrow transplantation to the treatment of genetic diseases.Science.1986;232:1373-1376.
63. Owen RD.Immunogenetic consequences of vascular anastomoses between bovine twin.Science.1945;102:400-02.
64. Flake AW, Harrison MR and Adzick NS. Transplantation of fetal hematopoietic stem cell in utero : The creation of hematopoietic chimeras.Science.1986;233:766-768.
65. DeMoor G, et al. A new case of human chimerism detected after pregnancy :46XY karyotype in the lymphocytes of a woman. Acta Clin Betagica.1998;43:231-235.
66. Sellers MJ.Transplantation of anemic mice of the W – series with hematopoietic tissue bearing marker chromosomes.Nature.1982; 295:244-247.

67. Fleischman RA and Mintz B. Prevention of genetic anemias in mice by microinjection of normal hematopoietic stem cells into the fetal placenta. Proc Natl Acad Sci. 1976;76:5736-5743.
68. Blazer BP and Taylor DV. In utero transfer of adult bone marrow cells into recipients with severe combined immunodeficiency disorder yields lymphoid progeny with T and B cell functional capabilities. Blood. 1995;86:4353-4366.
69. Zanjani ED, et al. Adult hematopoietic cells transplanted to sheep fetus continue to produce adult globins. Nature. 1982;295:244-245.
70. Roodman GD, Kuehi TJ and Vandeberg JL. In utero bone marrow transplantation of fetal baboons with mismatched adult bone marrow. Blood cells. 1991;17:367-375.
71. Brent L. An immunologic approach to the treatment of inherited life-threatening bone marrow defects. Fetal Ther. 1988;3:1-8.
72. Flake AW and Zanjani ED. In utero transplantation of hematopoietic stem cells. Crit Rev Oncol Hematol. 1993;15:35-48.
73. Pearce RD, Kiehm D and Armstrong DT. Induction of hematopoietic chimerism in the carpine fetus by intraperitoneal injection of fetal liver cells. Experientia. 1989;45:307-313.
74. Crombleholme TM, et al. Induction of tolerance by in utero hematopoietic stem cell transplantation: Results of mixed lymphocyte-fetal HSC reactions in rhesus monkeys. J Pediatr Surg. 1991;20:350-353.
75. Pallavicini MG, et al. Hematopoietic chimerism in rodent transplanted in utero with human hematopoietic cells. Transplant Proc 1992;24:542-543.
76. Zanjani ED, Pallavicini MG and Ascensao JL. Engraftment and long-term expression of human fetal hematopoietic stem cells in sheep following transplantation in utero. J Clin Invest. 1992;89:1178-1188.
77. Zanjani ED. About the cover illustration of preparing chimeric sheep. J Lab Clin Med. 1995; 126:102-6.
78. Landegent JE and Jansen DW. 2-Acetylaminofluorene-modified probes for the indirect hybridocytochemical detection of specific nucleic acid sequences. Exp Cell Res. 1984;153:61-72.

79. Srour EF, et al. Sustained human hematopoiesis in sheep transplanted in utero during early gestation with fractionated adult bone marrow cell. Blood.1992; 79:1404-1412.
80. Zanjani ED, Srour EF and Hoffman RN. Retention of long – term repopulating ability of xenogeneic transplanted purified adult human bone marrow hematopoietic stem cells in sheep. J Lab Clin Med.1995;126:24-28.
81. รศ. ดร.กัลยา วาณิชย์ปัญญา.การวิเคราะห์สถิติ : สถิติสำหรับการบริหารและวิจัย. พิมพ์ครั้งที่ 6. กรุงเทพมหานคร : จุฬาลงกรณ์มหาวิทยาลัย,2539.หน้า 96-137.
82. Schlitt HJ, et al. Persistence of donor lymphocytes in liver allograft recipients. Transplantation.1993;56:951-955.
83. Starzl TE, et al. Cell migration, chimerism and graft acceptance. Lancet.1992; 339:1579-1582.
84. Shimizu Y, et al. Engraftment of cultured human hematopoietic cells in sheep. Blood.1998;91:3688-3684.
85. Roscoe RA, Rybka WB and Winkelstein A. Enumeration of CD 34+ hematopoietic stem cells for reconstitution following myeloablative therapy. Cytometry.1994; 16:74-79.
86. Fukada J, et al .Direct measurement of CD 34 + blood stem cell absolute counts by Flow Cytometry. Stem Cells.1998.4:294-300.
87. Kirby MR and Donahue RE. Rare event sorting of CD 34+ hematopoietic cells. Ann NY Acad Sci.1993;677:413-416.
88. Gross HJ, et al. Model study detecting breast cancer cells in peripheral blood mononuclear cells at frequencies as low as 10^{-7} . Proc. Natl.Acad Sci USA.1995;92:537-541.
89. Fuchimoto Y, et al. Relationship between chimerism and tolerance in a kidney transplantation model. J Immunol.1999;162:1150-1155.
90. Brecher ME, Sims L and Schmitz J. North American multicenter study on flow cytometric enumeration of CD 34+ hematopoietic stem cells. J Hematother1996; 5:227-236.

91. Almeida – Porada GD, Hoffman R, and Zanjani ED. Detection of human cells in human/sheep chimeric lambs with in vitro human stroma – homing potential. Experimental Hematology. 1996;24:482-487.
92. Cotteret S, et al. Fluorescent in situ hybridization on flow – sorted cells as a tool for evaluating minimal residual disease of chimerism after allogeneic bone marrow transplantation. Cytometry. 1998;15:216-222.
93. McDaniel HB, et al. Prospective study of microchimerism in transplant recipients. Clin. Transplant. 1999;13:187-192.
94. Flake AW and Zanjani ED. In utero hematopoietic stem cell transplantation: ontogenic opportunities and biologic barriers. Blood. 1999;94:2179-2191.
95. Almeida – Porada G, et al. Co – transplantation of stroma results in enhancement of engraftment and early expression of donor hematopoietic stem cell in utero. Exp Hematol. 1999;27:1569-1575.



ศูนย์วิทยทรัพยากร
จุฬาลงกรณ์มหาวิทยาลัย



APPENDICES

ศูนย์วิทยทรัพยากร
จุฬาลงกรณ์มหาวิทยาลัย

APPENDIX A

Buffers and Reagents

1. 10 × Phosphate Buffer Saline (PBS)	1	Liter
NaCl	80	g
Na ₂ HPO ₄	9.136	g
KCl	2	g
KH ₂ PO ₄	2	g
Distilled water	900	ml

Adjusted the pH value to 7.3- 7.4 with 1M HCl, add distilled water to 1 liter and sterilized by autoclaving.

2. 1 × Phosphate Buffer Saline (PBS)	1	Liter
10 × PBS	100	ml
Distilled water	900	ml

Bring on sterilized by autoclaving.

3. 60% Percoll solution	0.5	Liter
Percoll (Stock solution)	300	ml
1 × PBS	200	ml

Mix well and stored at 4°C

4. 1% Paraformaldehyde in PBS	250	ml
Sodium cacodylate	2.68	g
Sodium chloride	1.90	g
Paraformaldehyde	2.95	g
1 × PBS	200	ml

Add the following while stirring, cool at room temperature , adjust the pH to 7.2-7.4 and raise the final volume to 250 ml. Store at 4°C in a foil wrapped.

5. Freezing solution for cryopreservative	80	ml
---	----	----

Bovine calf serum	20	ml
Dulbecco's solution	50	ml
DMSO	10	ml

Sterilized technique by filtering through a nito-cellulose membrane.

6. 20 × SSC Solution	250	ml
20 × SSC (Salt and Sodium Citrate)	66	g
Distilled water	200	ml

Adjusted the pH value to 5.3 with 10 N NaOH (about 6.5 ml),adjust final volume to 250 liter and filter through a 0.45 0.45 μm membrane filtration unit.

7. 1× SSC Solution	1	Liter
20 × SSC (pH 5.3)	100	ml
Distilled water	900	ml

Adjusted the pH value to 7.0 ± 0.2 with NaOH and sterilized filter through a 0.45 0.45 μm membrane filtration unit.

8. 1% formaldehyde solution	40	ml
37% formaldehyde solution	1	ml
1 × PBS	39	ml
MgCl ₂	0.18	g

Mix well and stored at 4°C. Use with in 1 week.

9. Carnoy's Fixative	100	ml
Acetic acid	25	ml
Methanol	75	ml

Mix well and stored at -20°C.

10. 0.01 N HCl	100	ml
HCl 1 N	1	ml
Distilled water	99	ml

Mix well and stored at - 20°C for up to 3 month.

11. 1 M NaOH	100	ml
NaOH	4	g
Distilled water	100	ml

stored at room temperature.

12. 0.02% Pepsin in 0.01 NHCl	250	μl
Pepsin (Stock 10%)	0.4	μl
HCl 0.01 N	25	μl
Distilled water	225	μl

Make freshly each day before use.

13. Rnase – Dnase free (100 μg /ml)	500	μl
Rnase – Dnase free (500 μg /ml)	100	μl
Distilled water	400	μl

Make freshly each day before use

ศูนย์วิทยทรัพยากร
จุฬาลงกรณ์มหาวิทยาลัย

APPENDIX B

The Flow Cytometry (FACSCalibur™, Becton Dickinson) Procedure for User's guide.

Before turning on the Flow Cytometry

1. Check the levels of the sheath reservoir should be no more than $\frac{3}{4}$ full. (sufficient for approximately 3 hours for run time)
2. Check the levels of the waste reservoir should contain approximately 400 ml of undiluted household bleach .(5% Sodium hypochlorite)

Fill the sheath reservoir before user turn on the Flow Cytometry. If the Flow Cytometry is already turned on , user will need to relieve the pressure from the sheath reservoir before fill it.

Starting up the FACSCalibur

Check the fluid levels of the sheath reservoir and the waste Reservoir .If necessary, fill the sheath reservoir and empty the waste reservoir and To ensure proper initialization between the cytometer and computer, turn on the FACSCalibur before turning on the computer

1. Turn on the FACSCalibur. The power switch is located in the lower – left conner of the instrument. Move the tube support arm to the right and remove the tube of distilled water from the sample injection port (SIP).
2. Make sure the FACSCalibur is pressurized. This can be done simply by making certain the sheath reservoir fits snugly beneath bracket. When the system is fully pressurized, the reservoir dose not move.
3. Check the sheath filter for trapped air bubbles. Vent the air from the filter if necessary. If bubbles are visible, gently tap the filter body with your finger to dislodge the bubbles and force them to the top . Push the roller in the pinchcock forward to allow the pressurized sheath fluid to force the air bubbles into the waste reservoir.
4. Clear the flow cell area of trapped air bubbles by press on switch the fluid

control dial to "PRIME" repeat 2-3 times as necessary until no bubbles are visible upon filling and display the fluid control dial to "STANDBY".

Starting up the Computer and Acquisition

1. Turn on the computer Macintosh system.
2. Check the operating state of the FACSCalibur, choose status from the flow cytometer menu. The displays the Status window, status is "*not ready*" that indicates the laser is warming up to 15 mW.(approximately 5 min.),the sheath reservoir is empty or the waste reservoir is full. If status is "*Ready*" that indicates a sample is on the SIP, the tube support arm is centered and the fluid control dial is set to run.
3. Choose connect to Cytometry from the Acquire menu
4. Choose CellQuest software from the Apple menu. The CellQuest copyright message appears, followed by the CellQuest desktop displaying an untitled experiment window. All CellQuest software functions are performed in this window through the use of the tool palette and items within the menu bar. User may create plots for acquisition or analysis for experiment.
5. Optimization is the instrument adjustment procedure that optimally sets by choose the detectors, threshold, amplifiers and compensation for specific sample. when using CellQuest software
6. Install the sample tube on the SIP and quickly center the tube support arm under the tube and set the fluid control dial to RUN
7. If user want walking away from the system, set the fluid control dial to STANDBY to stop sheath consumption and reduce laser power. Install a tube containing no more than 1 ml of distilled water on the SIP and center the tube support arm. This prevents the sample injection tube from drying out. Follow this rule when the instrument is turn on or off.

Quality Control and Instrument Adjustment Before Using

Performing a quality control procedure is recommended to monitor the instrument and ensure that it is operating consistently from one day to the next.

1. Open FACSCComp software, follow on running FACSCComp.

2. Run Calibrite beads (white , red and green) in unstained and mixed tube
3. Each time user run FACSComp software, the instrument settings are saved to a file in the BD references folder.

System Daily Cleaning

FACSCalibur has been designed to require a minimum amount of maintenance for preserve the reliability of the instrument, basic preventive maintenance procedures must be performed daily cleaning when user shut down the instrument to clean the sample injection tube. This aim to prevent it from becoming clogged and to remove adhesive dyes.

1. With the tube support arm to the right , install a tube containing 4 ml of 5% Sodium hypochlorite on the SIP. Allow the vacuum to aspirate 2 ml of the solution.
2. Set the sample flow rate switch to HI, then center the tube support arm and allow the 5% Sodium hypochlorite to run for 5 min.
3. With the tube support arm to the right , install a tube containing 4 ml of distilled water on the SIP. Allow the vacuum to aspirate 2 ml of the water.
4. Center the tube support arm and allow the water to run for 5 min.
5. Set the fluid control dial to STANDBY.
6. The distilled water no more than 1 ml should remain on the SIP after the instrument has been turn off to prevent salt deposits from forming in the sample injection tube.

Shutting Down the FACSCalibur

1. Allow the FACSCalibur to remain in STANDBY for 5 min. before turn off the power. This gives the laser time to cool before shut down.
2. Turn off the FACSCalibur.
3. Exit the software. Choose Quit from the file menu. Quit all other applications before turning off the computer.
4. Shut down the computer, choose from the special menu.

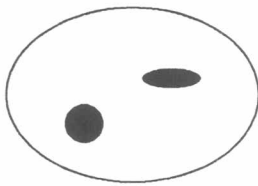
APPENDIX C

Evaluation of FISH Results

Probe signal Enumeration

It is important to become familiar with the size, shape and fluorescence intensity of each of the DNA probe signals in order to accurately enumerate the hybridization results. The following information is provided to assist how to accurately enumerate probe signals. Using objectives with higher magnification (100X), count the number of probe signals within lymphocyte boundary.

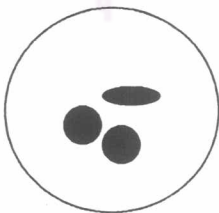
The following diagram illustrate correct interpretation of probe signals



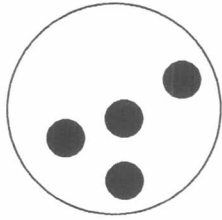
Count as 2 signals : one is very compact, the other is diffuse



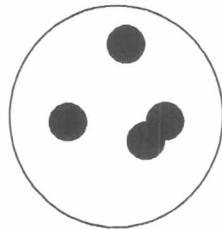
Count as 2 signals. One signal is split



Count as three signals.



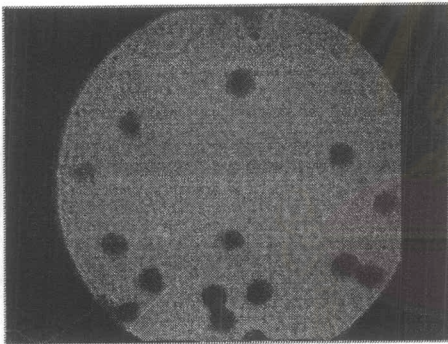
Count as four signals.



Count as three signals. One is split.

The Quality control of FISH method

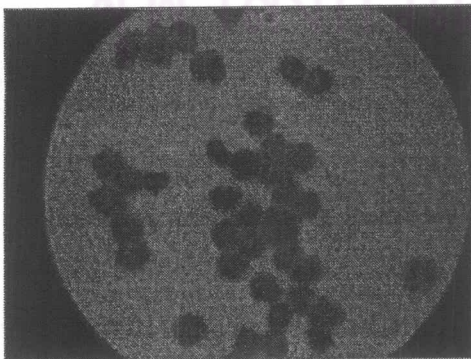
Example of the positive control (Human lymphocyte) and the negative control (sheep lymphocyte) were smeared on slide for dye that compare both of the positive and negative control after hybridized with CEP 16 DNA probe.



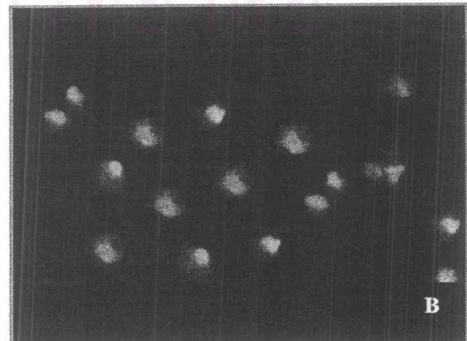
Positive control(Human lymphocyte)
were smeared on slide for dye



Positive control(Human lymphocyte)
were hybridized with CEP 16 DNA probe.

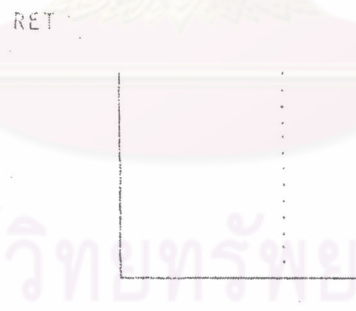
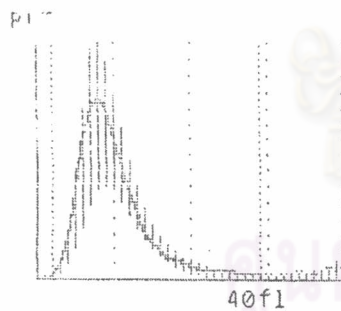
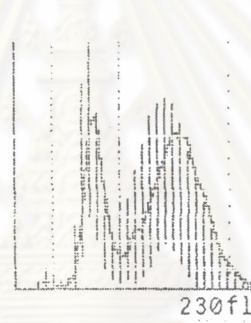
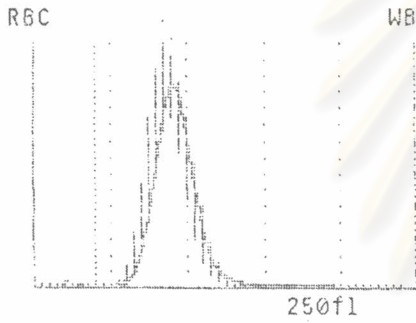
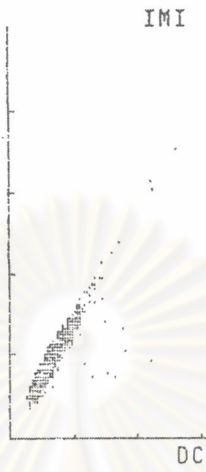
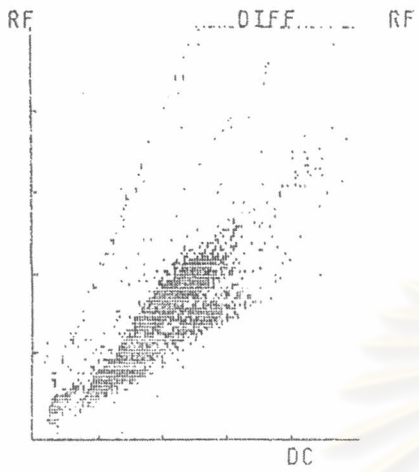


Negative control(Human lymphocyte)
were smeared on slide for dye



Negative control(Human lymphocyte)
were hybridized with CEP 16 DNA probe.

Complete Blood count of human umbilical cord blood

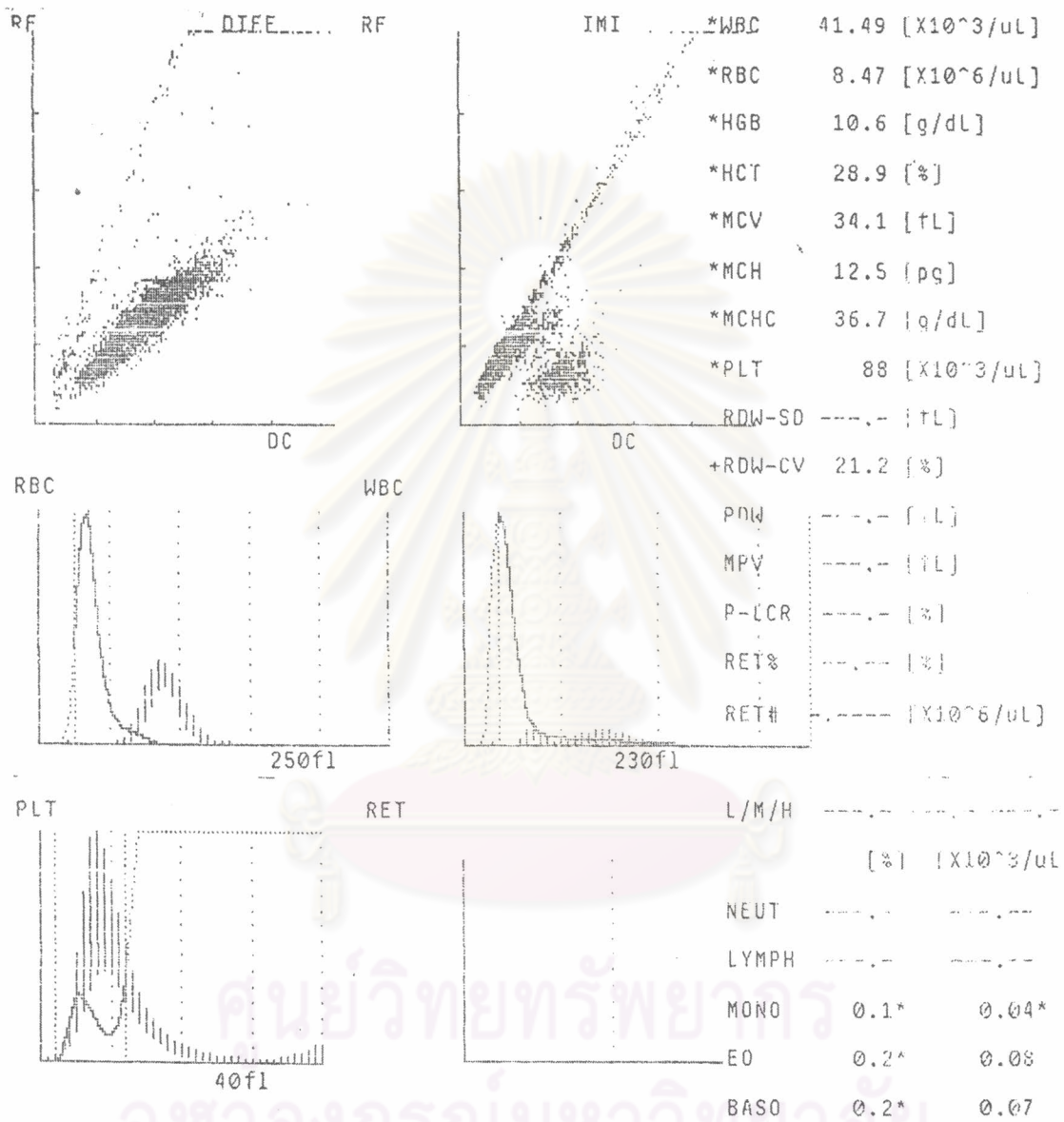


WBC	7.10 [X10 ³ /uL]
RBC	3.98 [X10 ⁶ /uL]
HGB	12.0 [g/dL]
HCT	36.1 [%]
MCV	90.7 [fL]
MCH	30.2 [pg]
MCHC	33.2 [g/dL]
PLT	247 [X10 ³ /uL]
RDW-SD	43.3 [fL]
RDW-CV	13.0 [%]
PDW	11.1 [fL]
MPV	10.1 [fL]
P-LCR	24.5 [%]
RET%	----- [%]
RET#	----- [X10 ⁶ /uL]

	L	M	H
	[%] [X10 ³ /ul]		
NEUT	51.4		3.65
LYMPH	30.9		2.19
MONO	7.0		0.50
EO	10.3+		0.73+
BASO	0.4		0.03

จุฬาลงกรณ์มหาวิทยาลัย

Complete Blood count of Sheep blood



ศูนย์วิทยุทันตกรรม
จุฬาลงกรณ์มหาวิทยาลัย

APPENDIX D

Results of statistic analysis

The SPSS version 9.0 window program were used for the statistic analysis of the percent of human lymphocytes in this objectives were paired t-test (Table) . The actual measured number of CD 45+ cells was compare to the predicted number of the concentration between human and sheep lymphocytes at all 5 ratio. (1:100, 1:500, 1:1,000, 1:5,000 and 1:10,000) by Flow Cytometry

- A. The actual measured number of CD 45+ cells
Ratio mixed human/sheep 1:100 $t=1.839$
 $P=0.087$
- B. The actual measured number of CD 45+ cells
Ratio mixed human/sheep 1:500 $t=1.773$
 $P=0.098$
- C. The actual measured number of CD 45+ cells
Ratio mixed human/sheep 1:1,000 $t=-1.928$
 $P=0.074$
- D. The actual measured number of CD 45+ cells
Ratio mixed human/sheep 1:5,000 $t=-0.696$
 $P=0.498$
- E. The actual measured number of CD 45+ cells
Ratio mixed human/sheep 1:10,000 $t=1.839$
 $P=0.087$

The actual measured number of CD 45+ cells was compare to the predicted number of the concentration between human and sheep lymphocytes at all 5 ratio. (1:100, 1:500, 1:1,000, 1:5,000 and 1:10,000) by FISH analysis.

A. The actual measured number of CD 45+ cells	
Ratio mixed human/sheep 1:100	t=-4.847 P=0.000*
B. The actual measured number of CD 45+ cells	
Ratio mixed human/sheep 1:500	t=-4.782 P=0.000*
C. The actual measured number of CD 45+ cells	
Ratio mixed human/sheep 1:1,000	t=-5.446 P=0.000*
D. The actual measured number of CD 45+ cells	
Ratio mixed human/sheep 1:5,000	t=-5.576 P=0.000*
E. The actual measured number of CD 45+ cells	
Ratio mixed human/sheep 1:10,000	t=3.955 P=0.001*

* The mean of difference is significant at the lower 0.05 level.

The percent donor cells of human lymphocytes were detected at ratio 1:100,1:500,1:1,000,1:5,000and 1:10,000 in mixed experiment by Flow Cytometry and FISH analysis.

Ratio mixed human/sheep 1:100

Flow-FISH analysis of human/sheep 1:100

$t = 7.065$

$P = 0.000^*$

Ratio mixed human/sheep 1:500

Flow-FISH analysis of human/sheep 1:500

$t = 6.006$

$P = 0.000^*$

Ratio mixed human/sheep 1:1,000

Flow-FISH analysis of human/sheep 1:1,000

$t = 2.197$

$P = 0.045^*$

Ratio mixed human/sheep 1:5,000

Flow-FISH analysis of human/sheep 1:5,000

$t = -1.012$

$P = 0.327$

Ratio mixed human/sheep 1:10,000

Flow-FISH analysis of human/sheep 1:10,000

$t = 0.924$

$P = 0.371$

* The mean of difference is significant at the lower 0.05 level.

The percent donor cells engraftment in chimeric lambs no. 40A3 and 41J2 at two times intervals(10 days and 1 month after birth) by Flow Cytometry analysis .

A. Chimeric lambs no. 40A3

Comparison between 10 days and 1 month after birth $t= 1.600$
 $P= 0.356$

B. Chimeric lambs no. 41J2

Comparison between 10 days and 1 month after birth $t= 5.027$
 $P= 0.110$

C. Comparison chimeric lambs

no. 40A3 and no. 41J2 at 10 days after birth $t= -1.940$
 $P= 0.330$

D. Comparison chimeric lambs

no. 40A3 and no. 41J2 at 1 month after birth $t= 3.025$
 $P= 0.197$



ศูนย์วิทยทรัพยากร
จุฬาลงกรณ์มหาวิทยาลัย

BIOGRAPHY

Miss Sukanya Suwanmaneerut was born on June 14 1976 in Bangkok, Thailand. She received the degree of Bachelor of Biology of Science in 1988 from faculty of science, Mahidol University, Bangkok, Thailand. She has enrolled at Chulalongkorn University in graduate program for the degree of master of science in medical science in 2003.



ศูนย์วิทยทรัพยากร
จุฬาลงกรณ์มหาวิทยาลัย