

REFERENCES

- Beard Group, Bankruptcy Creditors' Service & Internet Bankruptcy Library. (2000, January 28) *Troubled Company Reporter - Asia Pacific Newsletter TCRAP*, 3(20). Retrieved January 9, 2006, from http://bankrupt.com/TCRAP_Public/000128.MBX
- Bechstedt H.-D. & Legsomboon, W. (2004). *Global Economy and Social Networking – A Case Study from Northern Thailand*. Paper presented at the International Conference entitled 'Impact of Globalization, Regionalism and Nationalism on Minority Peoples in SEA', Chiang Mai, Thailand.
- Buadaeng, K. (2003). *Buddhism, Christianity and the Ancestors; Religion and pragmatism in Skaw Karen Community of North Thailand*. Chiang Mai, Thailand: Sprint.
- Buergin, R. (2002). *Change and Identity in Pwo Karen Communities in Thung YaiNaresuan Wildlife Sanctuary, A 'Global Heritage' in Western Thailand* (SEFUT Working Paper No. 11). Freiburg, Germany: Working Group Socio-Economics of Forest Use in the Tropics and Subtropics, Albert-Ludwigs-Universität Freiburg. Retrieved from http://www.sefut.uni-freiburg.de/pdf/WP_11.pdf
- Escobar, A. (1995). *Encountering Development: The Making and Unmaking of the Third World*. NJ: Princeton University Press.
- Fujioka, R. (2002). *Case Study on Education Opportunities for Hill Tribes in Northern Thailand: Implication for sustainable rural development* (RAP Publication 2002/05). Bangkok, Thailand: Food and Agriculture Organization of the United Nations, Regional Office for Asian and the Pacific. Retrieved from: <http://www.fao.org>

Hares, M. (2004). *Changes in Land Use and the Forest Environment in Northern Thailand from the Local Perspective*. Finland: University of Helsinki, Viikki Tropical Resources Institute.

United Nations Development Program. (2005). *Human Development Reports: What is HD – Glossary*. Retrieved August 21, 2005, from <http://hdr.undp.org/hd/glossary.cfm>

International Work Group for Indigenous Affairs. (2001). *The Indigenous World 2000/2001*, Copenhagen, Denmark: Eks-Skolens Trykkeri.

International Work Group for Indigenous Affairs. (2005). *The Indigenous World 2005*, Copenhagen, Denmark: Eks-Skolens Trykkeri.

Kanstrup-Jensen, A. (2003). *Constraints on Capability Formation of Indigenous Communities: The Case of Human Development among Akha and Hmong Groups in South East Asia* (Working Paper No. 116). Denmark: Aalborg University, Research Center on Development and International Relations.

Karen Network for Culture and Environment (n.d.). *Population of Thai-Karen People in Thailand*. Retrieved August 3, 2005, from <http://www.karencpeople.com/fasion/database.html>

Karen Refugee Committee. (2004). *Annual Report for year 2004*. Mae Sot, Thailand: Author.

Karen Refugee Committee. (2005). *Monthly Report; June 2005*. Mae Sot, Thailand: Author.

Laird, J. (2000). *Money politics, Globalization, and Crisis: The Case of Thailand*.

Singapore: Graham Brash.

Laungaramsri, P. (2000). The Ambiguity of 'Watershed': The politics of People and Conservation in northern Thailand. *Sojourn*, 15(1), 52-75.

Maniratanavongisri, C. (2004). *Changing Labour Organization in Karen Society in Thailand*. Paper presented at the International Conference entitled 'Impact of Globalization, Regionalism and Nationalism on Minority Peoples in SEA', Chiang Mai, Thailand.

Ministry of Education. (November 2005). *Press Conference on Education Reform*.

Retrieved January 14, 2006, from

<http://www.moc.go.th/icpmoe/Other/Report/next-step-forward.pdf>

Ministry of Interior, Community Development Department. *Population and villages in Tak province*. Retrieved December 18, 2005, from

<http://www.cdd.go.th/information/>

Ministry of Interior, Department Of Provincial Administration. (1997). *Data Processing Centre*, Retrieved September 10, 2005, from <http://www.dopa.go.th>

Nishikawa, J. (2004). How to overcome regional gaps and unequal development? The perspective of the Endogenous development Theory. In *International Symposium in 2004: Regional Differences and Inequalities in Asian Countries: Proceedings*. Japan: Institute for International Studies, Meiji Gakuin University.

Office of the United Nations Resident Coordinator & United Nations Country Team in Thailand. (2002). *A Partnership for Progress, The United Nations Development Assistance Framework for Thailand – UNDAF 2002-2006*. Bangkok, Thailand: Author.

Office of the National Economic and Social Development Board & United Nations Country Team in Thailand. (2004). *Thailand Millennium Development Goals Report 2004*. Thailand: Author.

Phongpaichit, P. & Baker, C. (2000). *Thailand's Crisis*. Chiang Mai Thailand: Silkworm Books.

Sato, J. (1998). The Political Economy of Bufferzone Management: A Case Study From Western Thailand. In Victor, M., Lang, C. and J. Bornemeier (eds.), *Community Forestry at a Crossroads: Reflections and Future Directions in the Development of Community Forestry*. Proceedings of an International Seminar, held in Bangkok, Thailand, 17 - 19 July 1997. RECOFTC Report No. 16. Bangkok, Thailand. Available from: <http://www.recoftc.org>

Thaiprasithiporn, T. (2004, March 18). Growing on a Royal Promise. *The Nation*, p. 10A.

Tourism Authority of Thailand. (n.d.) *Destination Guide: Tak; Geography of Tak province*. Retrieved December 4, 2005, from <http://www.tourismthailand.org/destinationguide/list.aspx?provinceid=50&typeid=7>

Trek Thailand. (n.d.) *Thailand Northern Provinces*. Retrieved December 4, 2005, from <http://www.trekthailand.net/pl/index.html>

Trek Thailand. (n.d.) *National Parks in Northern Thailand*. Retrieved December 4, 2005, from <http://www.trekthailand.net/north50/index.html>

Tribal Research Institute. (1999). Chiang Mai University, Thailand.

APPENDICES

APPENDIX A
THE POPULATION PROPORTION OF THAI-KAREN AND THEIR VILLAGES
IN THE FIVE BORDER DISTRICTS OF TAK

Source of data: <http://www.cdd.go.th/information/> Community Development Department (CDD): Viewed on 18th December 2005
 (พัฒนาระบบโดย ศูนย์สารสนเทศเพื่อการพัฒนาชุมชน กรมการพัฒนาชุมชน กระทรวงมหาดไทย)

District	Sub-district	Village	Population (By village)			Remarks
			Thai village	Others	Karen village	
A. Tha Song Yang	T. Mae Ou Su	Moo 1 Ban Ka Neh Ju)			278	Karen
		Moo 2 (Ban Maw Koe Kee)			420	Karen
		Moo 3 (Ban Mae Ou Su)			731	Karen
		Moo 4 (Ban Tee Noe Koe)			456	Karen
		Moo 5 (Ban Ra Ka Tit)			1538	Karen
		Moo 6 (Ban Nhong Bua)			2166	Karen
		Moo 7 (Ban Ta Kho Kee)			946	Karen
		Moo 8 (Ban Mae Song Noi)			421	Karen
		Moo 9 (Ban Mae Tee Ta)			438	Karen
		Moo 10 (Ban Dok Mai Sod)			392	Karen
	T. Mae La	Moo 1 (Ban Mae La Thai)	522			Thai
		Moo 2 (Ban Mae La Yang)	910			Thai & Karen
		Moo 3 (Ban Mae Aok Pha Roo)			409	Karen
		Moo 4 (Ban Huay Nok Kok)			456	Karen & Thai
		Moo 5 (Ban Kama Pha Doe)			922	Karen
		Moo 6 (Ban Khun Huay Mae La)	596			Thai & Karen
		Moo 7 (Ban Khun Huay Nok Kok)	371			Thai & Karen
		Moo 8 (Ban Tee Ju Lhaw Dee)			250	Karen
		Moo 9 (Ban Mae Aok Hoo)			248	Karen
		Moo 10 (Ban Pa Nok Kee)			479	Karen
		Moo 11 (Ban Mae La Poe Khee)			251	Karen
		Moo 12 (Ban Mae La Kee)			86	Karen

District	Sub-district	Village	Population (By village)	Remarks	District	Sub-district
	T. Mae Song	Moo 1 (Ban Mae Song)	250			Thai & Karen
		Moo 2 (Mae Salit Luang)	390			Thai & Karen
		Moo 3 (Ban Mae Salit Noi)			516	Karen
		Moo 4 (Ray Wow Kho – Tee Khu Kee)			529	Karen
		Moo 5 (Ban Mae Khoté)			213	Karen
		Moo 6 (Ban Mae Nin)			306	Karen
		Moo 7 (Ban Huay Ma Nok)	248			Thai & Karen
		Moo 8 (Ban Mae Ra Mung)			574	Karen & Thai
		Moo 9 (Ban Ta Pi Dei)			318	Karen
		Moo 10 (Ban Khler Day Kee)			144	Karen
		Moo 11 (Ban Baw Bo Kee)			91	Karen
		Moo 12 (Ban Wa Doe Kon)			375	Karen
		Moo 13 (Ban Tee Bote Kee)			53	Karen
		Moo 14 (Ban King Mai Khow)	278			Thai & Karen
		Moo 15 (Ban Mae Pha Daeng)	211			Thai & Karen
		Moo 16 (Ban San Doi Ngum)			490	Karen & Thai
		Moo 17 (Ban Paya Mai Tong0)			188	Karen
	T. Mae Wa Luang	Moo 1 (Ban Saw Khae Kah)			337	Karen
		Moo 2 (Ban Pang Tong)	632			Thai & Karen
		Moo 3 (Ban Mae Wa Luang)	676			Thai
		Moo 4 (Ban Mae Ohm Kee)			529	Karen
		Moo 5 (Ban Baw Ma)			356	Karen
		Moo 6 (Ban Mae La Yaw Dee)			355	Karen
		Moo 7 (Ban Ohm Kaw Ta)			399	Karen & Thai
		Moo 8 (Ban Wa Yha Joe)			434	Karen
		Moo 9 (Ban Khre Kon)			528	Karen
	T. Mae Tan	Moo 1 (Ban Mae Tan)	324			Thai
		Moo 2 (Ban Lum Rong)	73			Thai & Karen
		Moo 3 (Khun Huay Mae Kha Mhoe)			411	Karen

District	Sub-district	Village	Population (By village)	Remarks	District	Sub-district
		Moo 4 (Ban Bhrer Ta)			569	Karen
		Moo 5 (Ban Huay Poo Kaeng)			417	Karen
		Moo 6 (Khun Huay Mae Tan)			559	Karen
		Moo 7 (Ban Mae Poe)			586	Karen
		Moo 8 (Ban Huay Mae Kha Mhoe)			685	Karen
		Moo 9 (Tung Tum)			280	Karen
		Moo 10 (Tung Na Sung)			193	Karen
	T. Tha Song Yang	Moo 1 (Tha Song Yang)	524			Thai
		Moo 2 (Mae Tuen)			846	Karen
		Moo 3 (Maw Khoo Tu)			607	Karen
		Moo 4 (Mae Wuay)			441	Karen
		Moo 5 (Khun Huay Mae Wuay)			199	Karen
		Moo 6 (Mae La Na)			533	Karen
		Moo 7 (Mae Ohm Ya)			300	Karen
		Moo 8 (Mae Ja Wung)			319	Karen
		Moo 9 (Suan Aoi)			770	Karen & Thai
A. Phop Phra	T. Waw Lay	Moo 1 (Ban Mae Khei Thai)	209			Thai
		Moo 2 (Ban Waw Lay Tai)	343			Thai
		Moo 3 (Ban Waw Lay Nua)	361			Thai
		Moo 4 (Ban Mae Aok Hoo)			554	Karen
		Moo 5 (Ban Ya Paw)			1087	Karen
		Moo 6 (Ban Phan Sik Patana)	237			Thai
		Moo 7 (Ban Sub Jarean)	1404			Thai
	RuangThaiPatana	Moo 1 (Kee Ree Noi)		801		Hmong & Thai
		Moo 2 (Ban Pa Kee)			551	Karen
		Moo 3 (Ruang Thai Patana 7)		254		Hmong
		Moo 4 (Tahan Phan Sik)	269			Thai
		Moo 5 (Ban Kao Ruan Thai)		1041		Hmong
		Moo 6 (Ruang Thai Patana 8)		294		Hmong

District	Sub-district	Village	Population (By village)	Remarks	District	Sub-district
		Moo 7 (Huay Num Yen)		979		Hmong
		Moo 8 (Jarean Mit)	589			Thai
		Moo 9 (Ruang Thai Sama Kee)		1178		Hmong
		Moo 10 (Ruang Thai Patana)		1094		Hmong
		Moo 11 (Sum Suk)	1755			Thai & Hmong
	T. Phop Phra	Moo 1 (Phop Phra Nua)	269			Thai
		Moo 2 (Phop Phar Klang)				Thai
		Moo 3 (Phop Phra Tai)	90			Thai
		Moo 4 (Huay Num Nak)			742	Karen
		Moo 5 (Muen Ru Chai)			321	Karen
		Moo 6 (Maw Kher Yang)			261	Karen
		Moo 7 (Phop Phra Sai Ngun)	228			Thai
		Moo 8 (Kaset Patana)			320	Karen
		Moo 9 (Pha Ka Jer)			124	Karen
	T. Chong Khaeb	Moo 1 (Ban Chong Khaeb)	216			Thai
		Moo 2 (Ban Saw Oho)	839			Thai & Karen
		Moo 3 (Khun Huay Chong Khaed)			316	Karen
		Moo 4 (Saw Ra Tae)			449	Karen
		Moo 5 (Tee Ka Pher)			270	Karen
		Moo 6 (Sae Ree Raad)	504			Thai
		Moo 7 (Don Jedee)	926			Thai
		Moo 8 (Sae Ree Raad Mai)	169			Thai
		Moo 9 (Huay Nok Lae)	493			Thai
		Moo 10 (Huay Laeng)	233			Thai
		Moo 11 (Ban Ngao Phai)	288			Thai
		Moo 12 (Mai KM 5)	200			Thai
		Moo 13 (Sub Anan)	633			Thai
		Moo 14 (Sum Yod Doi)	484			Thai
	T. Kiri Raad	Moo 1 (Umpien)		871		Hmong

District	Sub-district	Village	Population (By village)	Remarks	District	Sub-district
		Moo 2 (Mae La Mao)		443		Hmong
		Moo 3 (Pa Wai)		603		Hmong
		Moo 4 (Pa Kah)		737		Hmong
		Moo 5 (Rom Klao Smid)		1219		Hmong
		Moo 6 (Pa Kah Mai)		1049		Hmong
		Moo 7 (Pa Kah Kao)		1184		Hmong
		Moo 8 (Chi Ba Boe)		683		Hmong
		Moo 9 (Ban Mai Kiri Raad)		813		Hmong
		Moo 10 (Mai Yod Kiri)		463		Hmong
		Moo 11 (Mai Din Daeng)		852		Hmong
A. Mae Ramat	T. Sum Muen	Moo 1 (Pae Hae)			964	Karen
		Moo 2 (Khun Huay Mad Tow)			610	Karen
		Moo 3 (Nhong Luang)	582			Thai
		Moo 4 (Ban Saem)	427			Thai
		Moo 5 (Sam Muen Ton Phung)	521			Thai
		Moo 6 (Mae La Yawdee)				Karen
		Moo 7 (Ban Ohm Kawta)				Karen
		Moo 8 (Wua Ya Joe)				Karen
		Moo 9 (Muban Khra Koe)				Karen
	T. Mae Ramat	Moo 1 (Ton Phung)	985			Thai
		Moo 2 (Ban Lai Ta)	423			Thai
		Moo 3 (Ban Lai Ta)	213			Thai
		Moo 4 (Mae Ramat)	819			Thai
		Moo 5 (Ban Mae Ramat)				Thai
		Moo 6 (Sin Kao Kom)	71			Thai
		Moo 7 (Ban San Pa Tung)	303			Thai
		Moo 8 (Ban Lai Huay)	681			Thai
	T. Mae Tuen	Moo 1 (Huay Num Yen)			373	Karen
		Moo 2 (Huay Phra Jao)			231	Karen

District	Sub-district	Village	Population (By village)	Remarks	District	Sub-district
		Moo 3 (Huay Ma Khum)			260	Karen
		Moo 4 (Huay Ploo)			279	Karen
		Moo 5 (Ban Kun Wan)			318	Karen
		Moo 6 (Huay Kra Ting)			254	Karen
		Moo 7 (Tung Ton Ngeu)			147	Karen
		Moo 8 (Huay Sina)			495	Karen
		Moo 9 (Huay Mha Ba)	481			Thai
		Moo 10 (Huay Phrong)			566	Karen
		Moo 11 (Huay Ma Prao)			816	Karen
		Moo 12 (Ban Pae)			382	Karen
		Moo 13 (Ban Tee Wa Bway Hta)			829	Karen
	T. Mae Ja Rao	Moo 1 (Mae Ja Rao Ban Tiung)	60			Thai
		Moo 2 (Mae Ja Rao Song Kaew)	411			Thai
		Moo 3 (Mae Ja Rao Song Kaew)			250	Karen
		Moo 4 (Ban Wang Pha)	1149			Thai
		Moo 5 (Tung Lung)			156	Karen
		Moo 6 (Mae Ja Rao Ban Tung)	898			Thai
		Moo 7 (Huay Bong Mai)	463			Thai & Karen
		Moo 8 (Huay Bong)	678			Thai
		Moo 9 (Ban Mai)			190	Karen
	T. Phra Tha	Moo 1 (Huay Nok Lae Nua)	379			Thai
		Moo 2 (Ding Tha)			487	Karen
		Moo 3 (Pa Rai Nue)	948			Thai
		Moo 4 (Tung Ma Khum Pom)			667	Karen
		Moo 5 (Sam Pa Rai)	755			Thai
		Moo 6 (Phra Koi Wa)			294	Karen
		Moo 7 (Doi Pek)			347	Karen
		Moo 8 (Huay Slung)			254	Karen
	T. Ka Nae Ju	Moo 1 (Ban Nu Baw)			244	Karen



District	Sub-district	Village	Population (By village)	Remarks	District	Sub-district
		Moo 2 (Ban Pa Rai)			519	Karen
		Moo 3 (Ban Pala)			341	Karen
		Moo 4 (Ban Pae)			479	Karen
		Moo 5 (Huay Poo Ling)			399	Karen
		Moo 6 (Ban Mong Wa)			464	Karen
		Moo 7 (Ban Ka Nae Ju)			584	Karen
		Moo 8 (Ban Mae Ramat Noi)	436			Thai
		Moo 9 (Huay Haeng)			322	Karen
		Moo 10 (Ban Tung Pu Mein)			402	Karen
		Moo 11 (Ban Jok Pok)			424	Karen
		Moo 12 (Ban Huay Pal Kong)			407	Karen
		Moo 13 (Ban Nong Luang)	238			Karen & Thai
		Moo 14 (Sipa Kaw)			335	Karen
A. Mae Sot	T. Mae Pa	Moo 1 (Mae Pa Nua)	522			Thai
		Moo 2 (Mae Pa Klang)	1433			Thai
		Moo 3 (Mae Pa Tai)	1970			Thai
		Moo 4 (Ban Huay Kaloke)	844			Thai
		Moo 5 (Ban Paak Huay Mae Pa)	236			Thai
		Moo 6 (Ban Huay Hin Fon)	303			Thai
		Moo 7 (Ban Nhong Bua)	509			Thai
		Moo 8 (Ban Mae Pa Ban San)	399			Thai
		Moo 9 (Ban Phra Tad)	675			Thai
		Moo 10 (Ban Ruem Jai Patana)	386			Thai
	T. Mae Tao	Moo 1 (Mae Tao Tai)	753			Thai
		Moo 2 (Mae Tao Klang)	967			Thai
		Moo 3 (Mae Tao Pae)	1090			Thai
		Moo 4 (Mae Tao San Paeh)	745			Thai
		Moo 5 (Mae Tao San Roorein)	554			Thai
		Moo 6 (Ban Don Chai)	476			Thai

District	Sub-district	Village	Population (By village)	Remarks	District	Sub-district
	T. Mae Ku	Moo 1 (Mae Ku Luang)	581			Thai
		Moo 2 (Ban Pah Lad)				Thai
		Moo 3 (Ban Huay Pak La)	191			Thai
		Moo 4 (Ban Poo Ter)			737	Karen
		Moo 5 (Ban Nhong Num Keo)			192	Karen
		Moo 6 (Mae Ku Tai)				Thai
		Moo 7 (Mae Ku Noi)				Thai
		Moo 8 (Mae Ku Nua)				Thai
		Moo 9 (Mae Ku Mai Ta Sung)	615			Thai
		Moo 10 (Ban Koe Chua)			349	Karen
	T. Mae Kasa	Moo 1 (Mae Kud Luang)	602			Thai
		Moo 2 (Ban Mae Kasa)	664			Thai
		Moo 3 (Mae Kud Mai)	406			Thai
		Moo 4 (Ban Kok Ko)	381			Thai
		Moo 5 (Mae Kud Sam Ta)	595			Thai
		Moo 6 (Muban Nam Dib)			519	Karen
		Moo 7 (Muban Huay Bong)	259			Thai
		Moo 8 (Mae Kud Sam Ta Mai)	412			Thai
		Moo 9 (Ban Thai Sama Kee)	801			Thai
		Moo 10 (Muban Mai Rim Mway)	735			Thai
		Moo 11 (Ban Poe Tong)			770	Karen
		Moo 12 (Ban Mai Patana)	453			Thai
		Moo 13 (Mae Kasa Mai Lai Ta)	224			Thai
		Moo 14 (Mae Kasa Poe Ti Ngoen)	591			Thai
		Moo 15 (Mae Kud Mai Dong Sawan)	427			Thai
		Moo 16 (Ban Kasa Nu Son)	373			Thai
	T. Maha Wan	Moo 1 (Muban Maha Wan)	531			Thai
		Moo 2 (Muban Mai Mae Kon Ken)	492			Thai
		Moo 3 (Muban Mon Hin Lek Fai)	290			Thai

District	Sub-district	Village	Population (By village)	Remarks	District	Sub-district
		Moo 4 (Mae Kon Ken)	773			Thai
		Moo 5 (Muban Huay Mie Paen)	623			Thai
		Moo 6 (Jedee Kok)		872		Hmong
		Moo 7 (Jedee Kok Mai)		1361		Hmong & Karen
		Moo 8 (Muban Huay Nam Kun)			290	Karen
		Moo 9 (Muban Huay Maha wong)	748			Thai
		Moo 10 (Kedee Kok Nua)		1119		Hmong & Karen
		Moo 11 (Muban Huay Mhee)			346	Karen
		Moo 12 (Muban Pang Wua)		591		Hmong
	T. Pa Waw	Moo 1 (Muban Pa Waw)	818			Thai
		Moo 2 (Mae La Mao)	610			Thai
		Moo 3 (Muban Poo Pae)			602	Karen
		Moo 4 (Muban Sam Muen Tung)			297	Karen
		Moo 5 (Bang Sang Kum)	658			Thai
		Moo 6 (Mae La Mao Lai Ta)	575			Thai
		Moo 7 (Ban Huay Krai)	277			Thai
		Moo 8 (Muban Haay Ra Ping)			329	Karen
		Moo 9 (Mae La Mao Sama Kee)	414			Thai
	T. Phrada Padae	Moo 1 (Kang Pi Ban)	1545			Thai
		Moo 2 (Ban Hua Fai)	1007			Thai
		Moo 3 (Mae Tao Mai)	481			Thai
		Moo 4 (Ban Padae)			361	Karen
		Moo 5 (Muban Tam Sua)			242	Karen
		Moo 6 (Khum Huay Mae Sot)			170	Karen
		Moo 7 (Ban Aueng Doi)	366			Thai
	T. Ta Sai Luad	Moo 1 (Muban Mae Tao)				Thai
		Moo 2 (Muban Ray Muay)				Thai
		Moo 3 (Muban Ta Aad)	536			Thai
		Moo 4 (Muban Wang Ta Kean)	1021			Thai

District	Sub-district	Village	Population (By village)	Remarks	District	Sub-district
		Moo 5 (Ban Nhong King Fah)				Thai
		Moo 6 (Ban Huay Muang)				Thai
	Dan Maelamoud	Moo 1(Ban Huay Ya Au)	314			Thai
		Moo 2 (Ban Pang Saan)	877			Thai
		Moo 3 (Ban Huay Plooi)			343	Karen
		Moo 4 (Ban Yang Huay Ya Au)			499	Karen
		Moo 5 (Ban Khon Huay Sum Poi)			123	Karen
		Moo 6 (Muban Khon Huay Chang Lai)	659			Thai
		Moo 7 (Muban Tong Chai)		474		Hmong
		Moo 8 (Ban Khon Thai Pla Lok)		596		Lisaw/Musaw
		Moo 9 (Muban Mai Poe Tong)		657		Lisaw/Musaw
		Moo 10 (Muban Mai Patana)		651		Lisaw/Musaw
A. Umphang	T. Umphang	Moo 1 (Ban Umphang)	364			Thai
		Moo 2 (Ban Pae Doe Ta)			84	Karen
		Moo 3 (Ban Keo Hang)			393	Karen
		Moo 4 (Ban Umphang Dee)			275	Karen
		Moo 5 (Ban Yamoe Kee)			282	Karen
		Moo 6 (Ban Mai Ta Pae)	201			Thai
	T. Nhong Luang	Moo 1 (Ban Nhong Luang)	539			Thai
		Moo 2 (Ban Ser Ta)			244	Karen
		Moo 3 (Ban Day Lae Kee)			309	Karen
	T. Moe Koe	Moo 1 (Ban Praw Pha Doe)	584			Thai
		Moo 2 (Ban Wa Kree Koe)			684	Karen
		Moo 3(Ban Mae Klong Kee)			590	Karen
		Moo 4 (Ban Mae Klong Yai)		964		Hmong
		Moo 5 (Muban Wa Buay Ta)			252	Karen
		Moo 6 (Ban Mae Klong Noi)		394		Hmong
		Moo 7 (Ban Mae Ka Sae)			263	Karen
	T. Mae La Mong	Moo 1 (Ban Palata)			517	Karen

District	Sub-district	Village	Population (By village)	Remarks	District	Sub-district
		Moo 2 (Muban Se Pla)			484	Karen
		Moo 3 (Ban Pa Ploo)			62	Karen
		Moo 4 (Muban Mae La Mong Kee)			241	Karen
		Moo 5 (Ban Na Luang Chom Poo)				Karen
	T. Mae Chan	Moo 1 (Muban Nu Sae Ploe)			428	Karen
		Moo 2 (Muban Klaw Taw)			800	Karen
		Moo 3 (Ban Ko Ta)			157	Karen
		Moo 4 (Ban Ti Poe Ji)			598	Karen
		Moo 5 (Muban Kwee Ta)			629	Karen
		Moo 6 (Muban Kwee Ler Taw)			157	Karen
		Moo 7 (Ban Mhong Kwa)			125	Karen
		Moo 8 (Ban Mae Chan Ta)			134	Karen
		Moo 9 (Muban Poeng Kloeng)			2135	Karen
		Moo 10 (Ban Retongku)			361	Karen
		Moo 11 Ban Tee Jaw See)			176	Karen
		Moo 12 (Ban Ma Oh Koe)			161	Karen
	T. Mae Klong	Moo 1 (Ban Mae Klong Mai)	752			Thai
		Moo 2 (Ban Mae Klong Kao)	265			Thai
		Moo 3 (Ban Mae Pa Kha)	172			Thai
		Moo 4 (Muban Mae Klong)	360			Thai
		Total population (by village) in the research districts	Thai 65,685	Others 22,237	Karen 61,131	
		Total Hmong/Musaw/Lisaw village = 28				
		Total Thai village = 135				
		Total Karen village = 140				

Note: Thai & Karen means more Thai than Karen in the village. Karen & Thai means more Karen than Thai in the village. The population in this table does not include population of municipals in the five border districts. This chart shows population and villages of Thai-Karen people in five border districts of Tak Province.

APPENDIX B PHOTOS OF THE RESEARCH

A Thai-Karen Phu Chuay has built a house in Phop Phrap village for his two children to stay and go to school. His village Chauck Khet is about half hour drive from here.



Some Thai-Karen farmers own small tractor for agricultural activities



A home shop selling clothing and other food stuffs in a Thai-Karen village in Phop Phra district



A farmland near Thai-Karen village in Mae Sot district, which is covered by chemicals and Thai-Karen farmers have to abandon their paddy fields



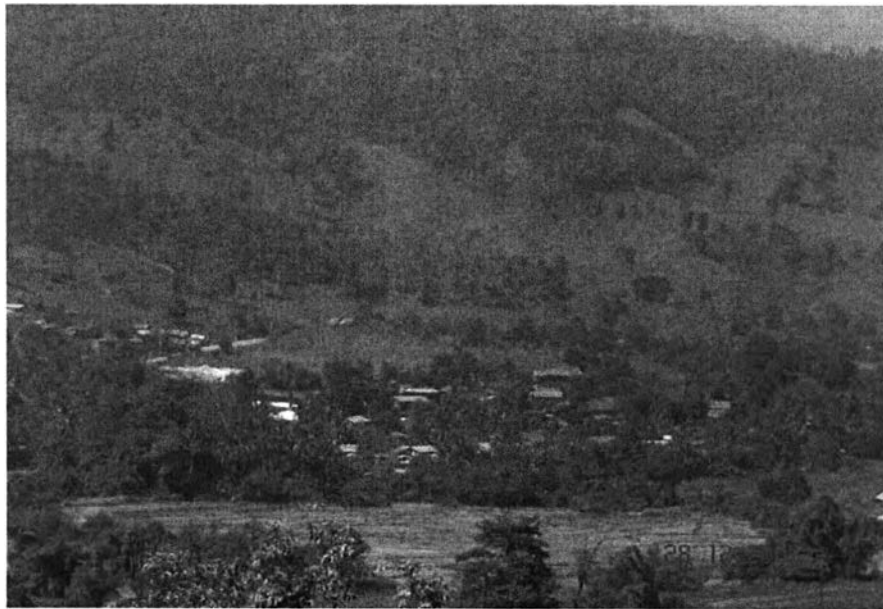
Two Thai-Karen staffs working in NGOs in Mae Sot



A Thai-Karen home shop selling goods



A Thai-Karen village Huay Na Nard which is in the slope of mountains



Pha Dah Ler who looks after Fr. Olivier's boarding hostel for Thai-Karen students



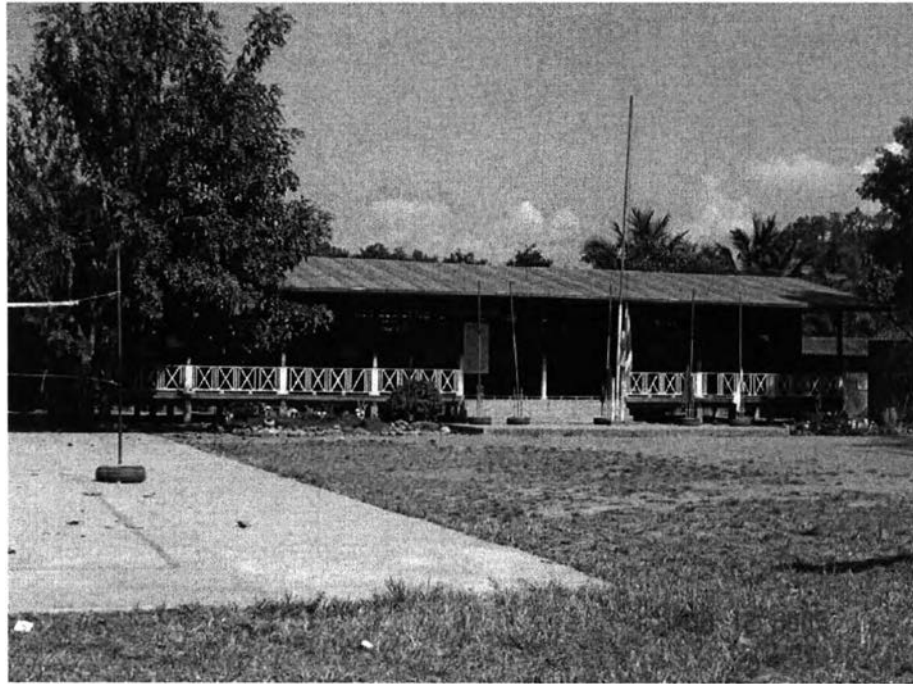
Fr. Olivier's boarding hostel which gives shelter to Thai-Karen students who come to study at Hsaw Ow Oh village School



A farmland nearby Thai-Karen village



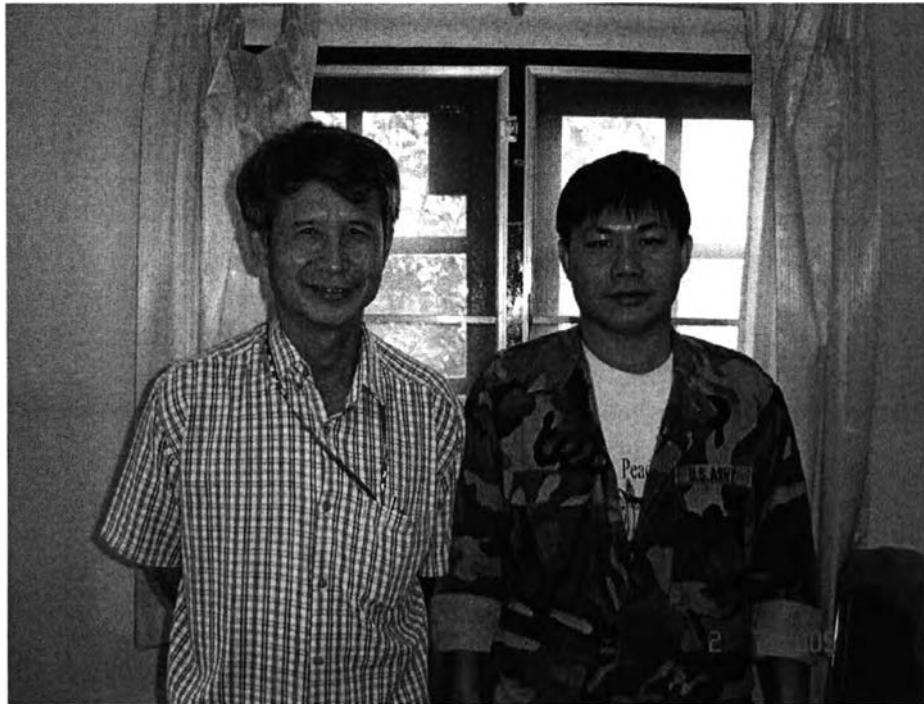
Primary school in Chauck Ket, a Thai-Karen village



A tractor owned by a Thai-Karen farmer who has good economic situation in the village



*Pha Tee*¹ Sanan (left), deputy field director of COERR, with researcher



Thai-Karen houses in Chauck Ket village



¹ Pha Tee (meaning uncle literally) is used in front of a person's name as a gesture of respect

Thai-Karen students at Phatarawitara School in Mae Sot district



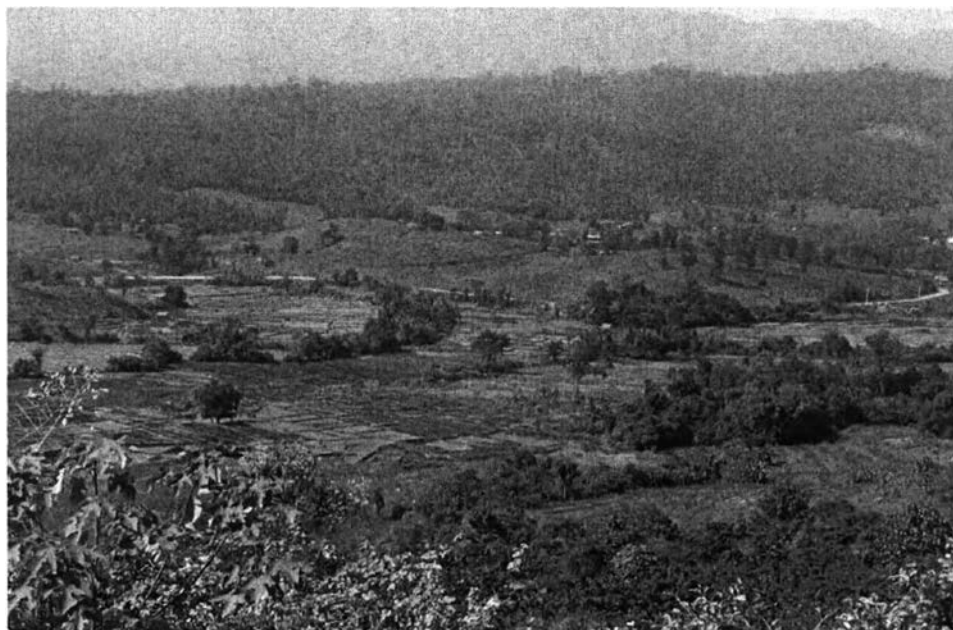
A Thai-Karen village (Chuck Ket) is just on the Thai-Burma border



After interviewed with Acham Tip (right), the Coordinator of SMRU, Chairman of KNCE –Tak province, and Advisor of Tak Border Child Assistance Foundation



Farmlands on hill slopes nearby Thai-Karen village in Phop Phra district



BIOGRAPHY

Phalehcher (William) Komonjaroon is a Thai-Karen with a Bachelor of Arts in Business Administration from Bradford University, England. He is a social worker, and over the past ten years he has collaborated with leaders of Karen community based organizations, such as Karen Network for Cultural and Environment (KNCE), Karen Youth Organization (KYO), and All Karen Development Association (AKDA), which are operating in Thai-Karen and Karen communities from Burma(Myanmar). He is currently working on Karen youth development and education.

